



**Master-Craft**
Building Made Easy™

Liberty Series
30-wide
Floorplans

Meet Master-Craft: homes for today built on a legacy of quality and value.

Ritz-Craft is excited to include the Master-Craft series of home designs based on our commitment to our company's heritage. Founded in 1954, Ritz-Craft remains a family owned and operated company with a mission to provide quality and affordable housing solutions nationwide. Our daily focus is on the needs of our customers. Ritz-Craft is proud to have earned a reputation in the building industry for providing unmatched value for home builders and their home buyers.

In today's economy, as the price for labor and material continue to rise, it can be difficult for home builders to provide families with a quality home within their budget. Our mantra of "Home Building Made Easy," for the Master-Craft collection challenges us to provide high-value, single and double section manufactured homes and simplified modular designs as our daily mission.

As a result, we are proud to note that the standard construction of Master-Craft collection products will provide many value-added:

- Architectural Shingles
- White Pre-Finished 'Craftsman Style' Molding Package
- Smooth Finished Drywall Ceilings
- European-Style Frameless Cabinets
- 16" O.C. Wall Construction with 2x6 Exterior Walls
- A broad offering of packages, options, and selections
- Quality standards and materials that distinguish Master-Craft from other brands available in this market segment



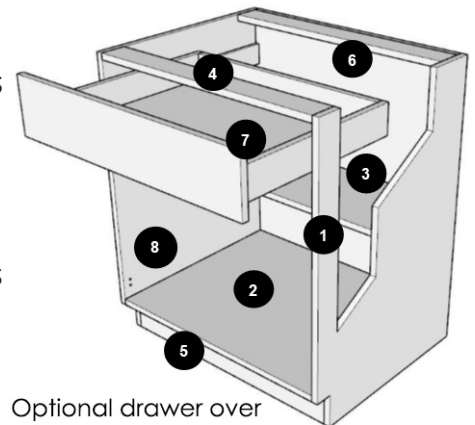
All Master-Craft collection plans will be backed by Ritz-Craft's company-wide quality commitment. We're proud of this new, reimagined line of manufactured housing solutions and we are grateful for the opportunity to deliver you a Master-Craft home.

European Technology Meets American Craftsmanship

Legacy Crafted Cabinets, a member of the Ritz-Craft family of companies has created an entirely new line of cabinetry solutions for the Master-Craft collection of homes. The new Legato Cabinetry boasts an imaginative, frameless cabinet construction, as well as several value-added standards:

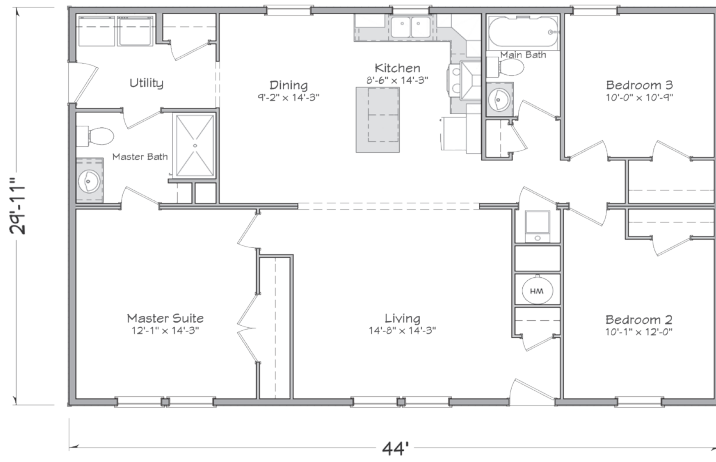
- Full-storage access
- Soft-close and self-close doors and drawers
- Adjustable base and overhead shelves with metal shelf clips
- Three standard colors, including white, gray, and a modern wood grain finish.

The look and functionality of quality cabinetry is at the heart of every home, and Legato Cabinetry by Legacy Crafted Cabinets is prove that it is possible to maintain affordability without sacrificing form or limiting function.



Optional drawer over door construction shown

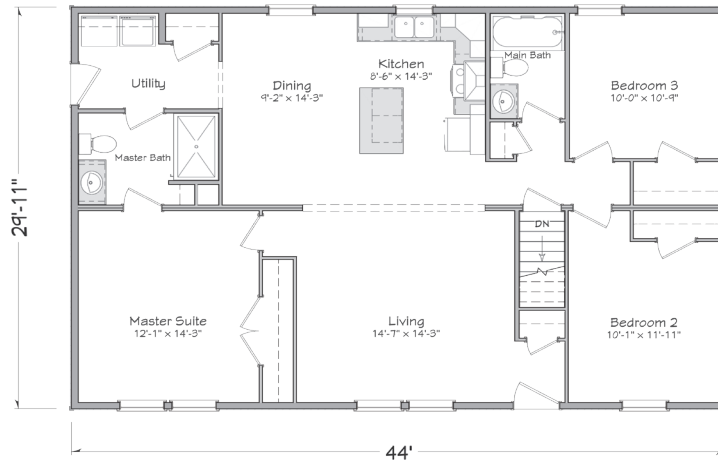
Legato
CABINETS



Baldwin 3044

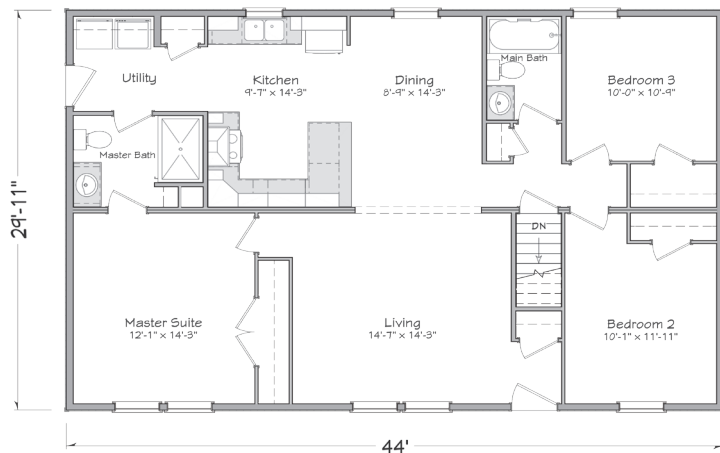
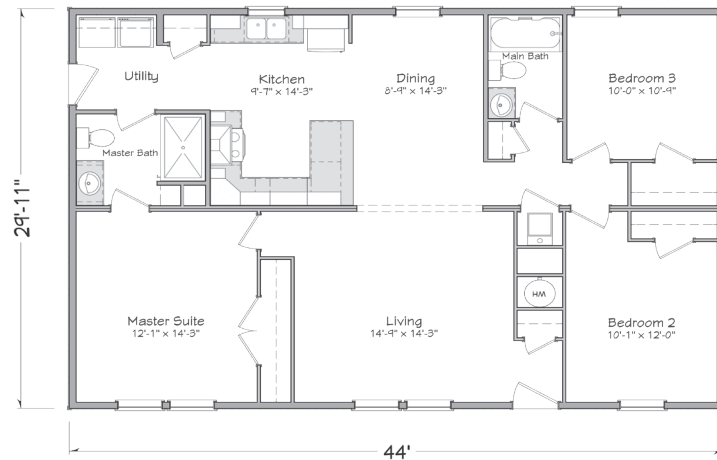
29'-11" x 44'
1,316 sq. ft.
3 bedroom • 2 bath

Baldwin 3044B (Basement Plan)

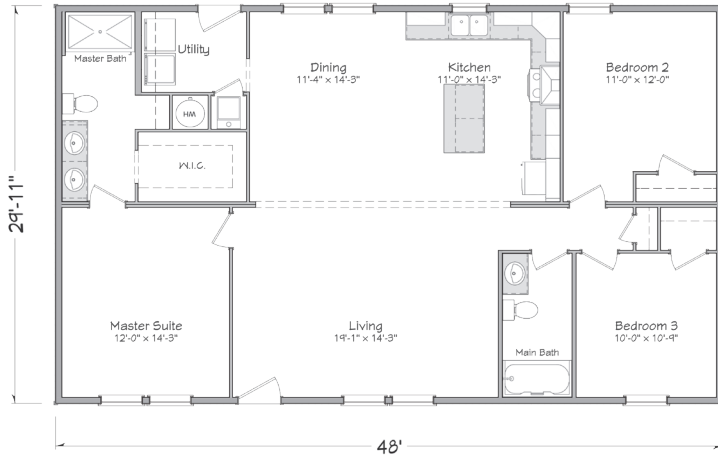


Dickenson 3044

29'-11" x 44'
1,316 sq. ft.
3 bedroom • 2 bath



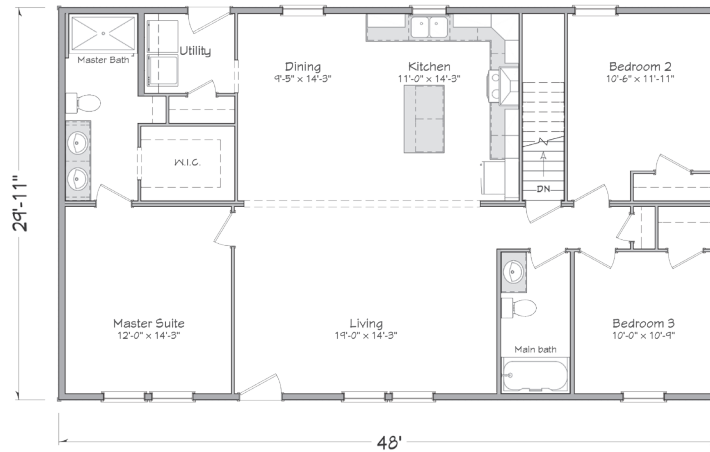
Dickenson 3044B (Basement Plan)



Gorham 3048

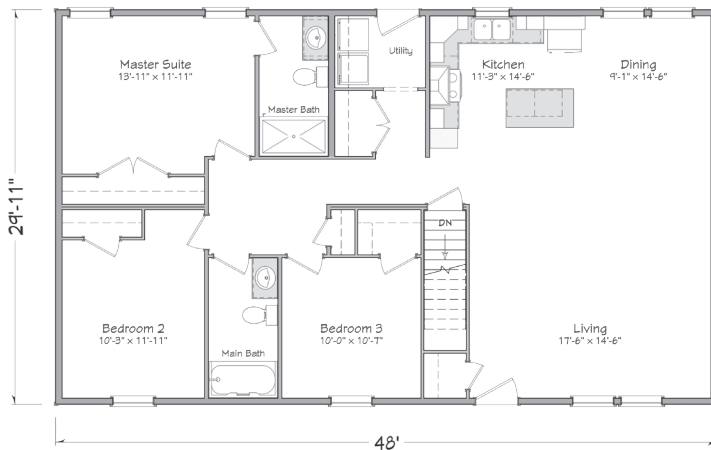
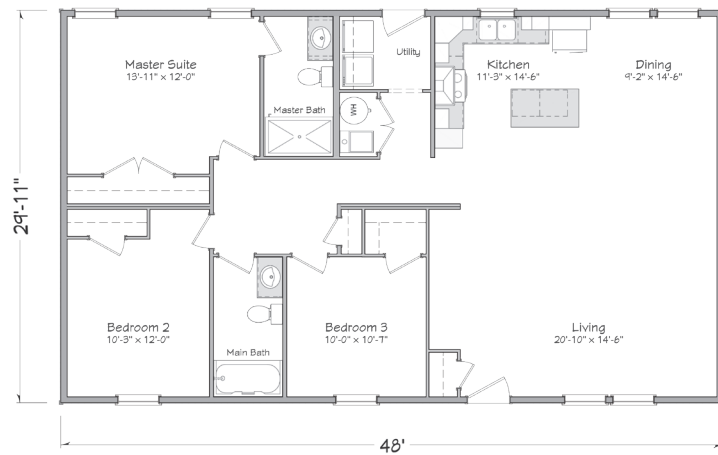
29'-11" x 48'
 1,436 sq. ft.
 3 bedroom • 2 bath

Gorham 3048B (Basement Plan)

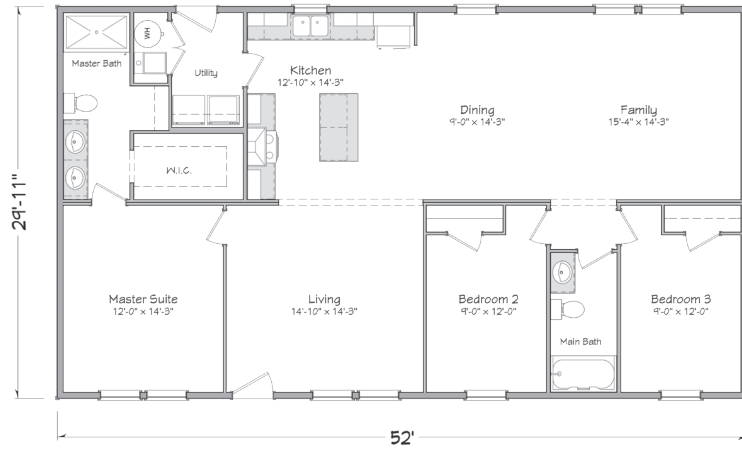


Livingston 3048

29'-11" x 48'
 1,436 sq. ft.
 3 bedroom • 2 bath



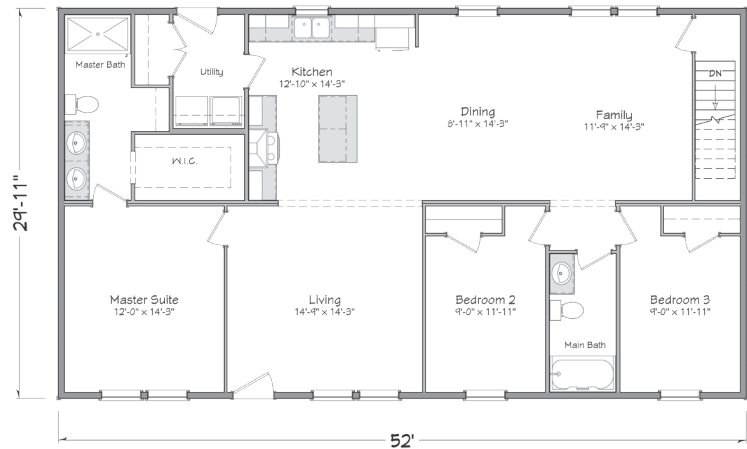
Livingston 3048B (Basement Plan)



Brearley 3052

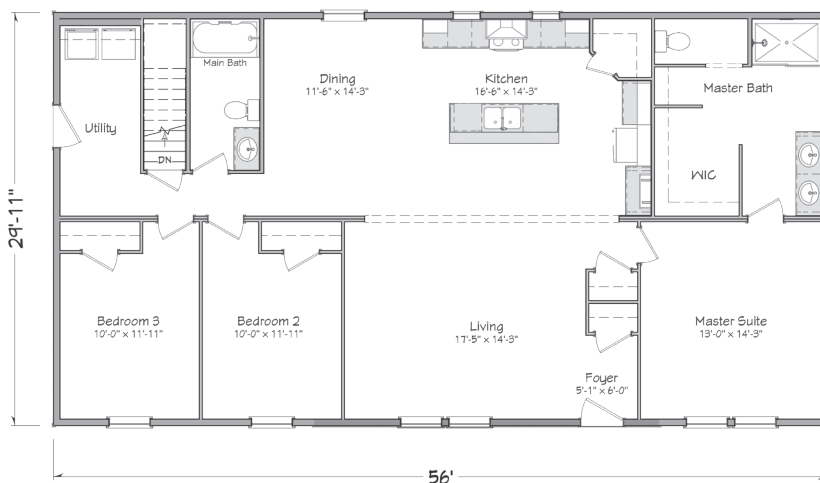
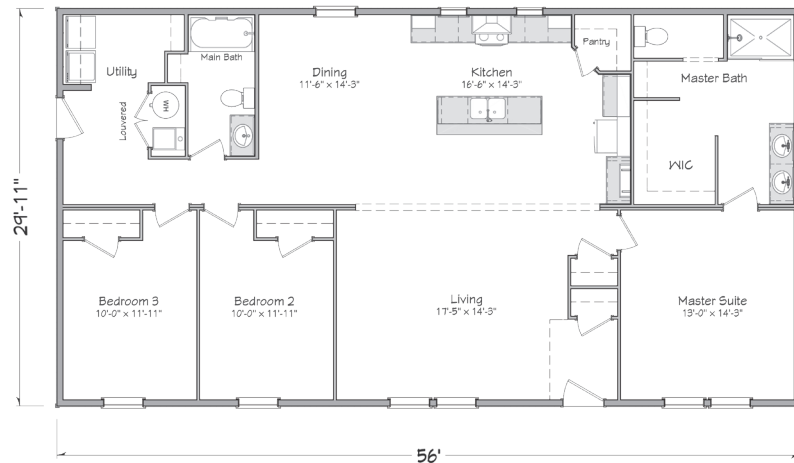
29'-11" x 52'
1,556 sq. ft.
3 bedroom • 2 bath

Brearley 3052B (Basement Plan)



Langdon 3056

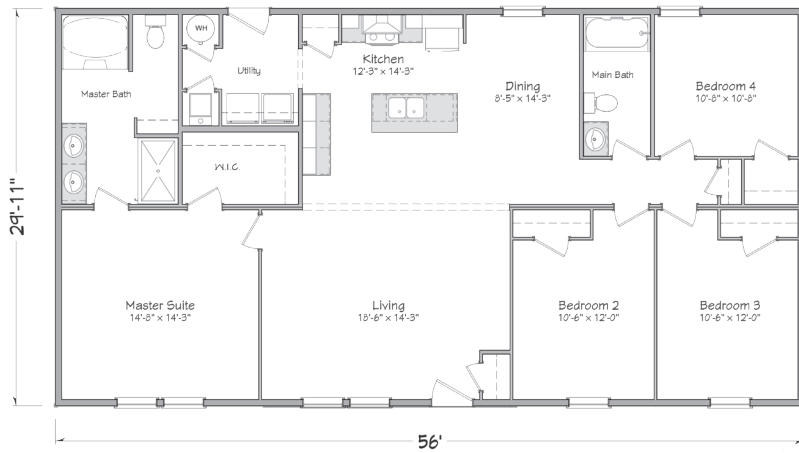
29'-11" x 56'
1,675 sq. ft.
3 bedroom • 2 bath



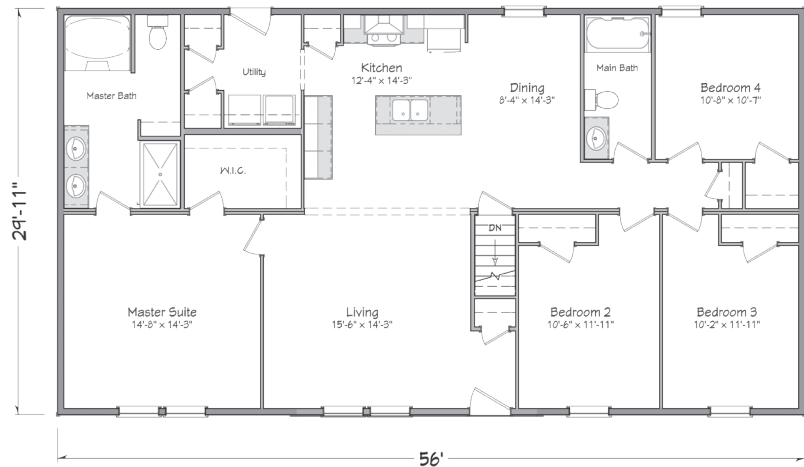
Langdon 3056B (Basement Plan)

Mifflin 3056

29'-11" x 56'
1,675 sq. ft.
4 bedroom • 2 bath

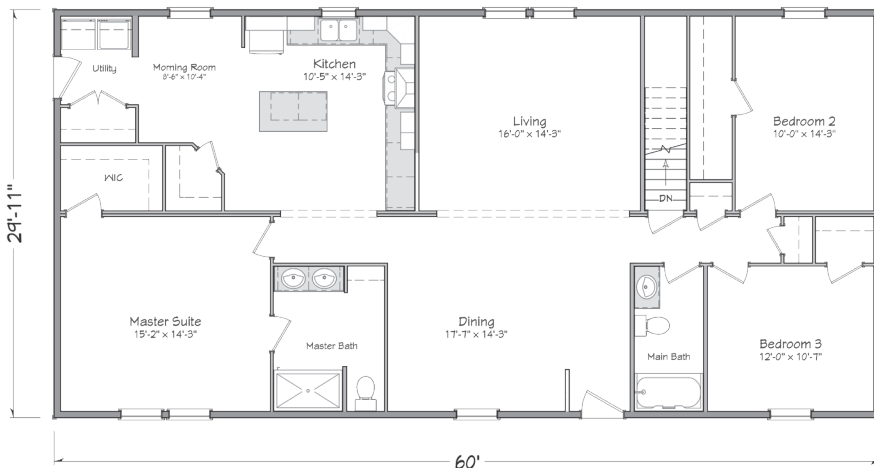
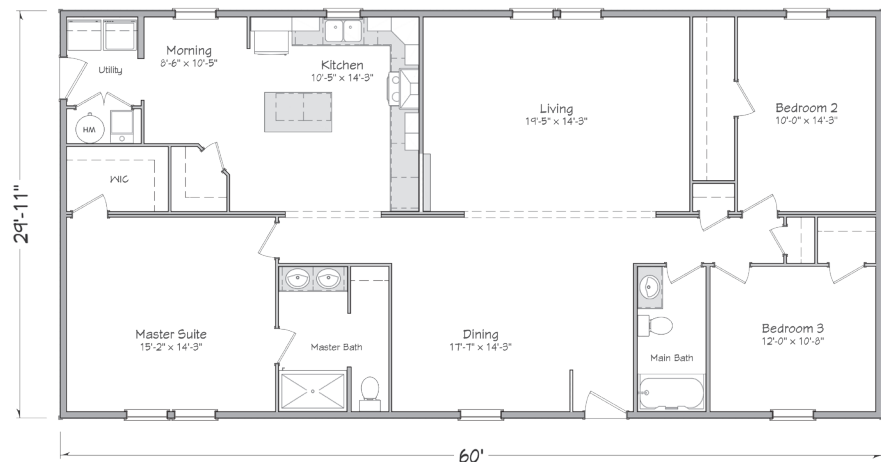


Mifflin 3056B (Basement Plan)



Franklin 3060

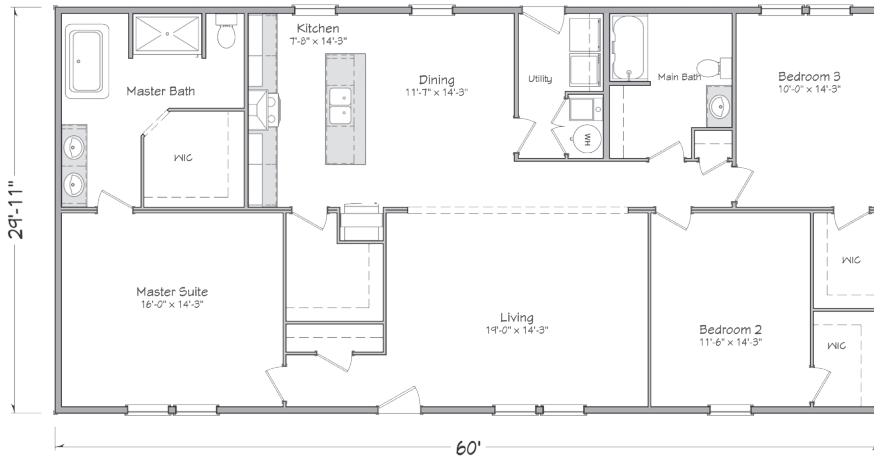
29'-11" x 60'
1,795 sq. ft.
3 bedroom • 2 bath



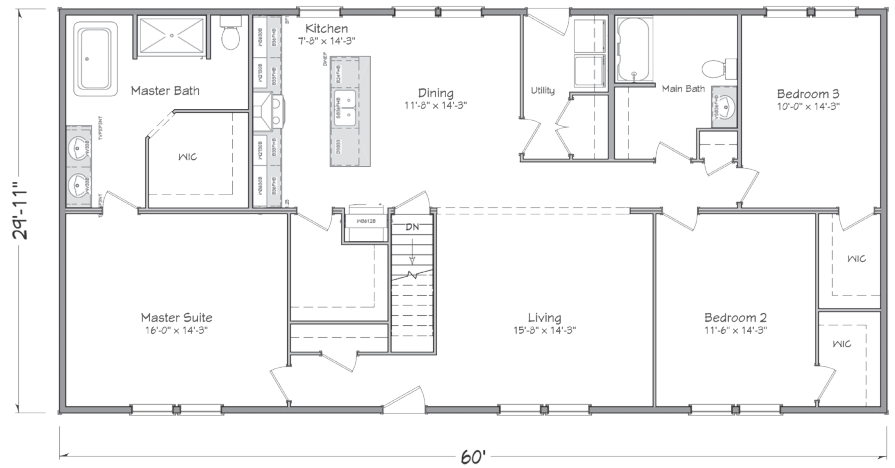
Franklin 3060B (Basement Plan)

Madison 3060

29'-11" x 60'
1,795 sq. ft.
3 bedroom • 2 bath

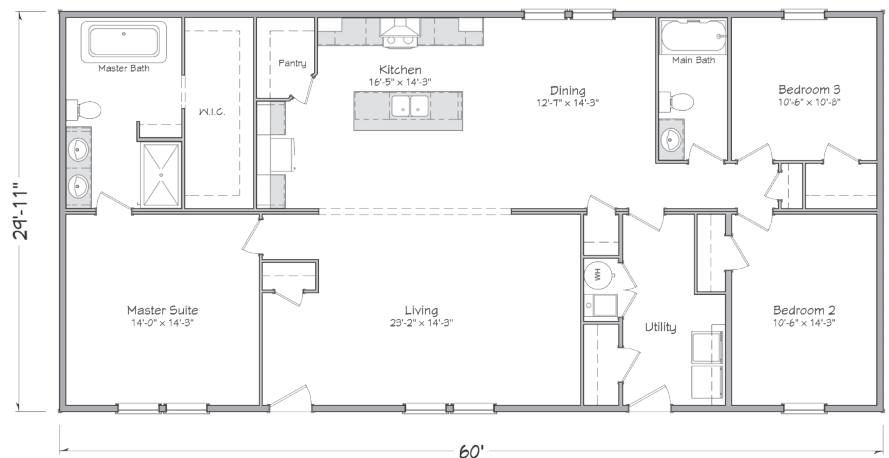


Madison 3060B (Basement Plan)

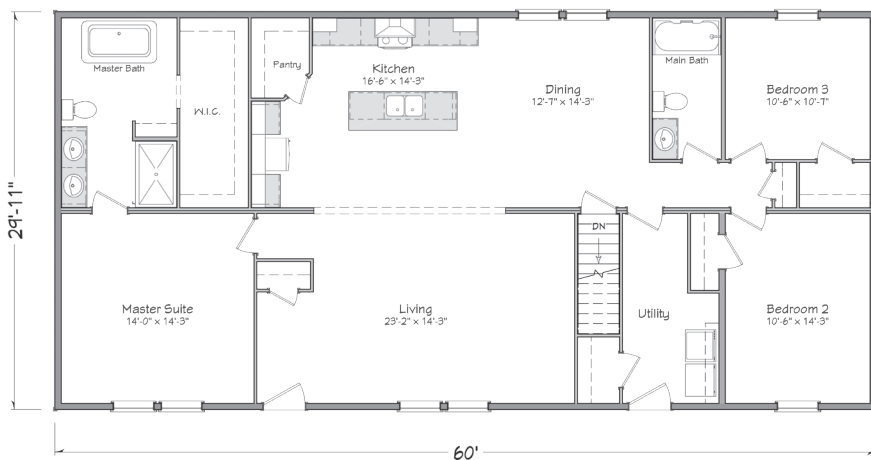


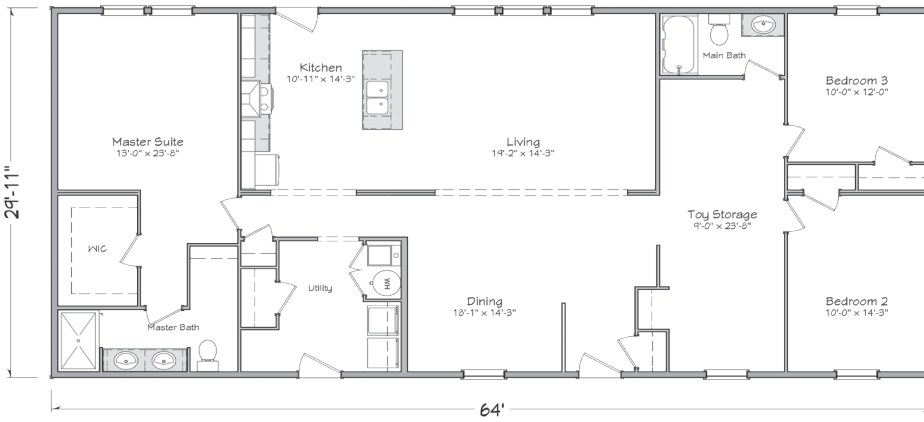
Morris 3060

29'-11" x 60'
1,795 sq. ft.
3 bedroom • 2 bath



Morris 3060B (Basement Plan)

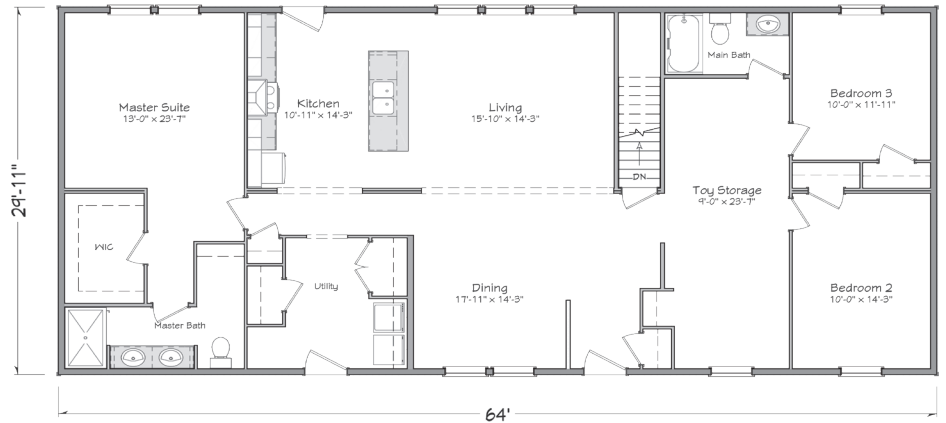




Rutledge 3064

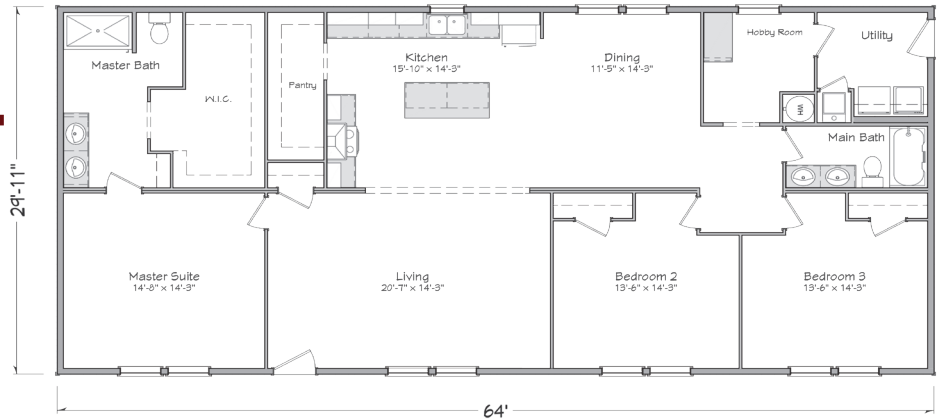
29'-11" x 64'
 1,915 sq. ft.
 3 bedroom • 2 bath

Rutledge 3064B (Basement Plan)

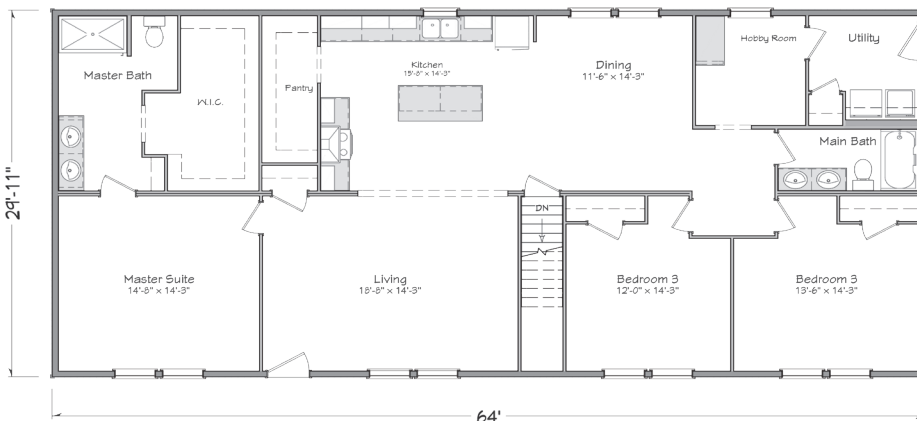


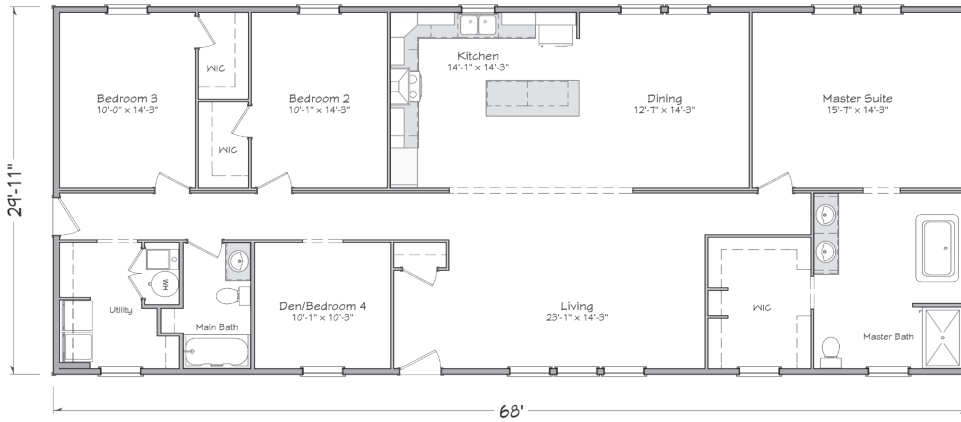
Washington 3064

29'-11" x 64'
 1,915 sq. ft.
 3 bedroom • 2 bath



Washington 3064B (Basement Plan)

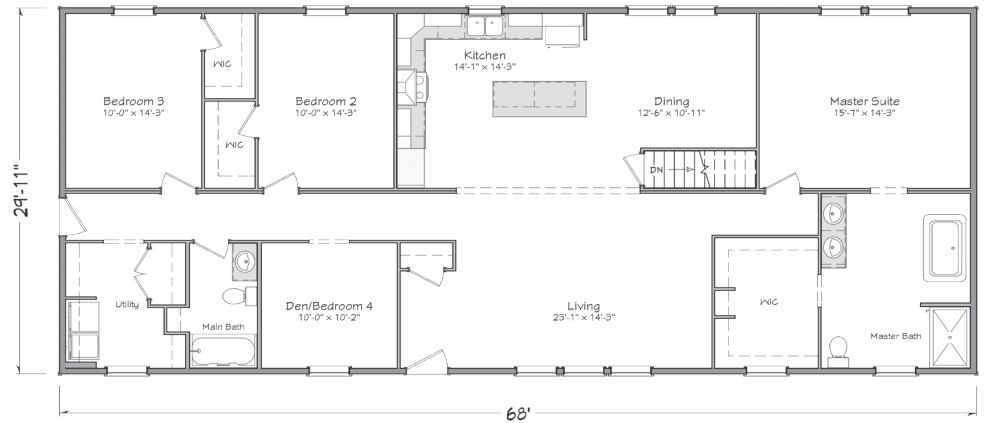




McHenry 3068

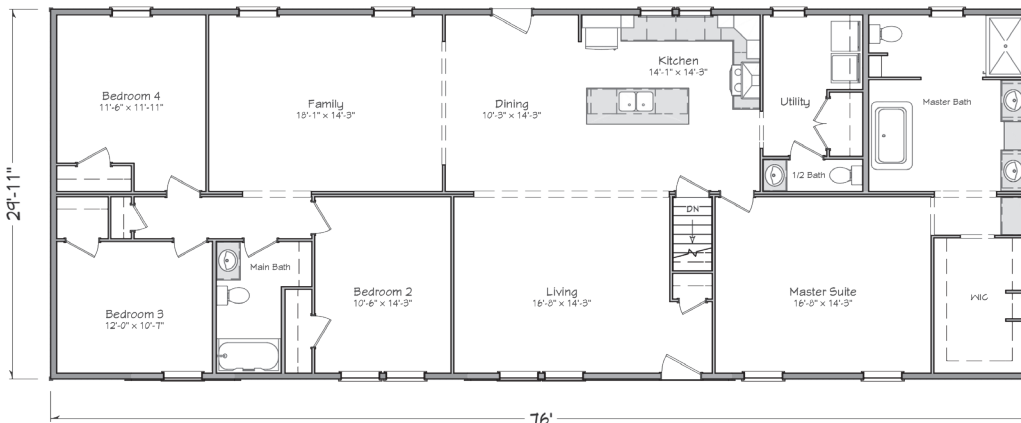
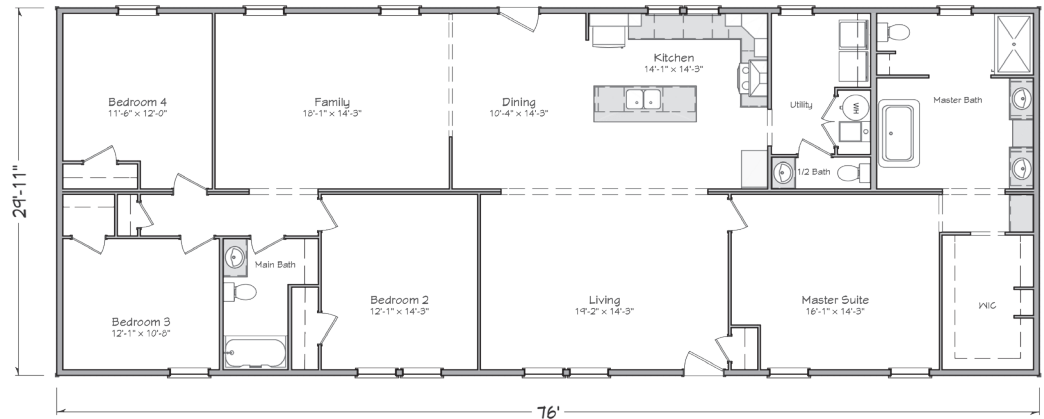
29'-11" x 68'
 2,034 sq. ft.
 4 bedroom • 2 bath

McHenry 3068B (Basement Plan)



Ingersoll 3076

29'-11" x 76'
 2,274 sq. ft.
 4 bedroom • 2.5 bath



Ingersoll 3076B (Basement Plan)



Approved homebuilders are independent business entities and are not agents of Master-Craft Corporation or its subsidiaries.

Due to occasional updating of building codes and Master-Craft's continuous product improvement, specifications are subject to change without prior notification. Be sure to request a copy of current specifications from your selected homebuilder.