

# American Dream

COLLECTION ★ ★ ★ ★ ★



HOME PLANS FROM 1500 TO 4000 SQUARE FEET



# American Dream

COLLECTION ★ ★ ★ ★ ★

Building a new home on land that you've chosen, and with the style and features you've always wanted, is a very gratifying experience. After all - building a home just the way you'd like it - is a major expression of your ideas and vision.

Your new home should start with a great plan. Our American Dream catalog includes many of our most current and best designs. All of the plans can be personalized with your choice of special features and finishes or modified to embrace your own design concepts.

Whether your need is for a small and cozy cottage or for a grand, sprawling design, you've come to the right place. Our American Dream plans offer great exterior curb appeal and carefully planned interiors for lasting comfort and enjoyment.

Thank you for considering a Ritz Craft Home. We look forward to making your new home the next and most important house we build.



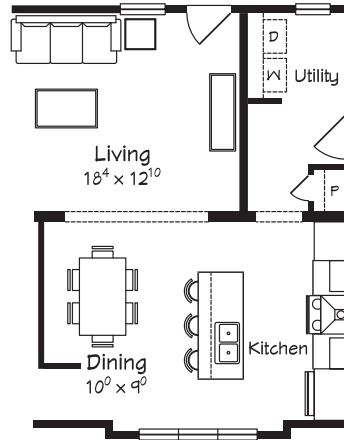




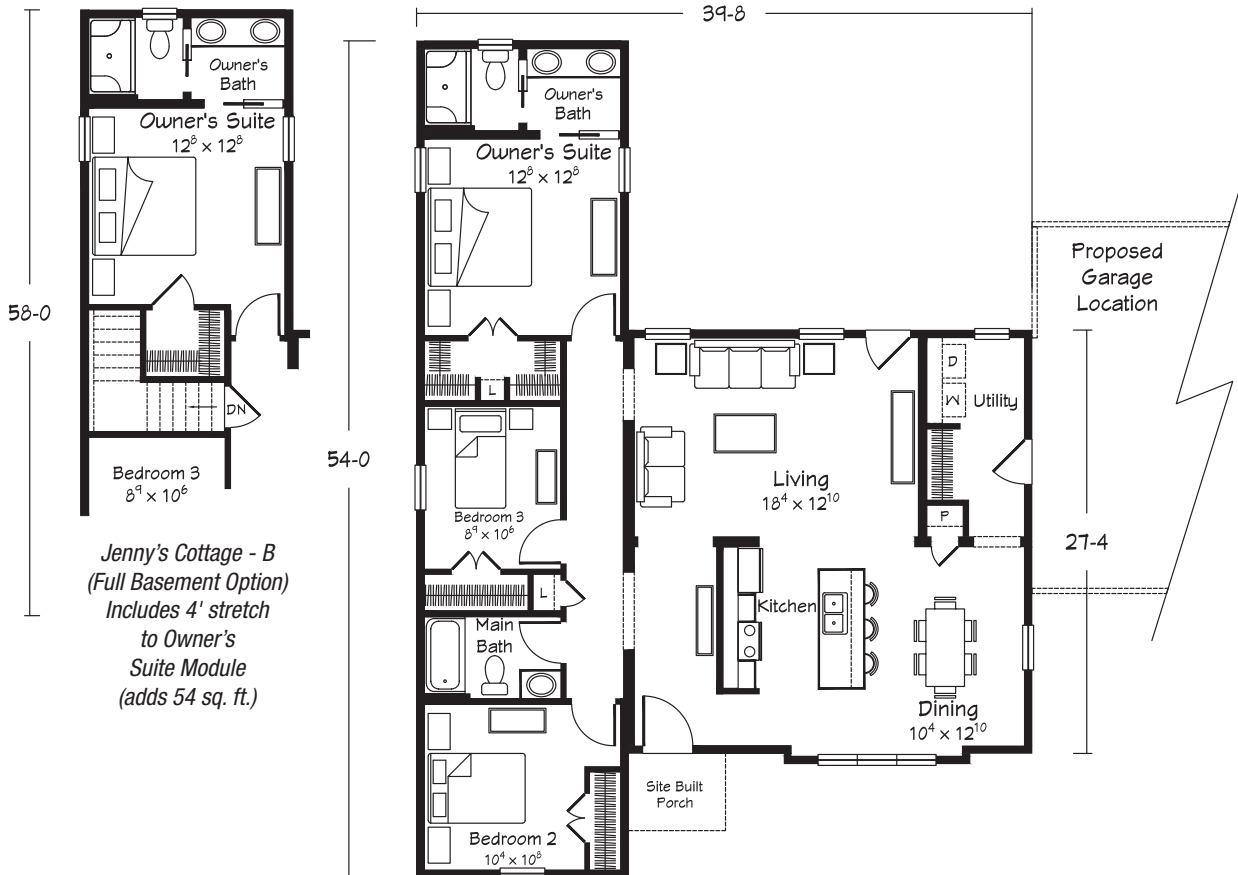
Shown with site built garage and porch.

## JENNY'S COTTAGE Ranch

3 Bedrooms · 2 Baths  
1459 sq. ft. Living Area



End Kitchen Option  
with custom cabinetry



Jenny's Cottage - B  
(Full Basement Option)  
Includes 4' stretch  
to Owner's  
Suite Module  
(adds 54 sq. ft.)

Total "sq. ft. Living Area" does not include garage or porch square footage.

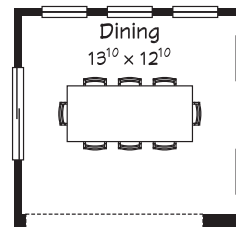


Shown with site built garage and porch.

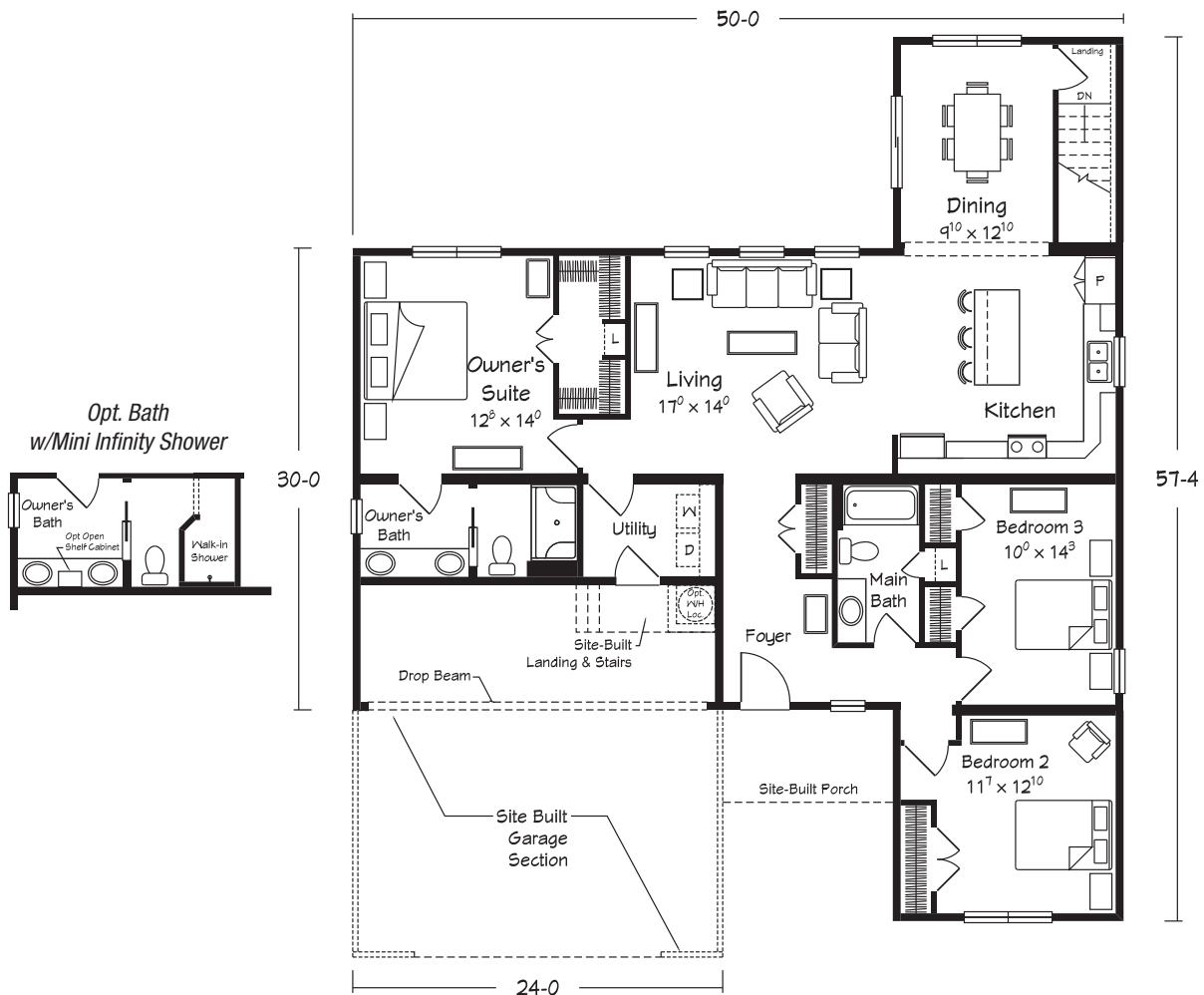
## MEDFORD II Ranch

3 Bedrooms • 2 Baths  
1662 sq. ft. Living Area

### Crawl Space Configuration



Note: Opt. Water Heater Location Outside of Utility Rm



Total "sq. ft. Living Area" does not include garage or porch square footage.

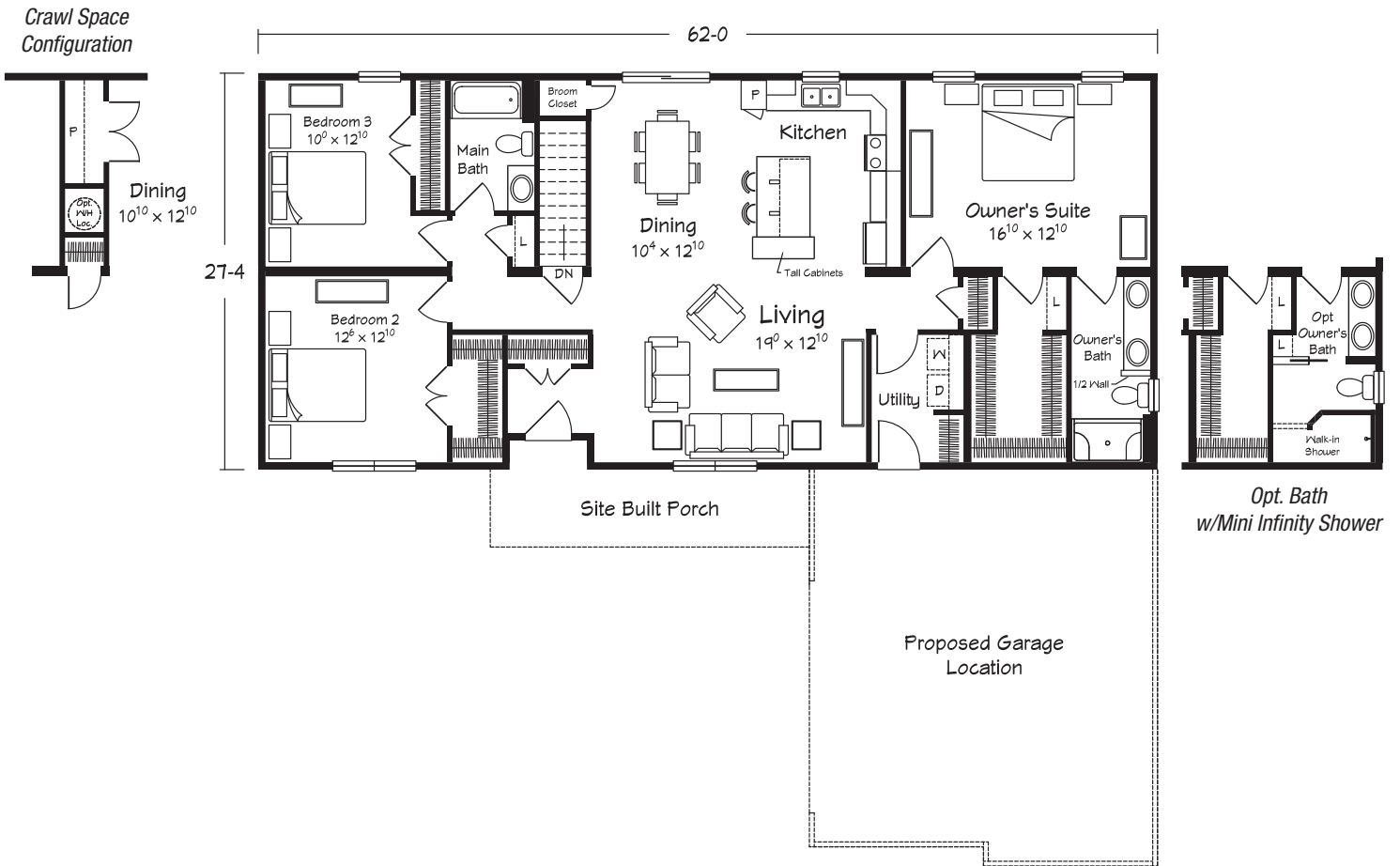


Shown with site built garage and porch.



## JOYFIELD III Ranch

3 Bedrooms · 2 Baths  
1687 sq. ft. Living Area



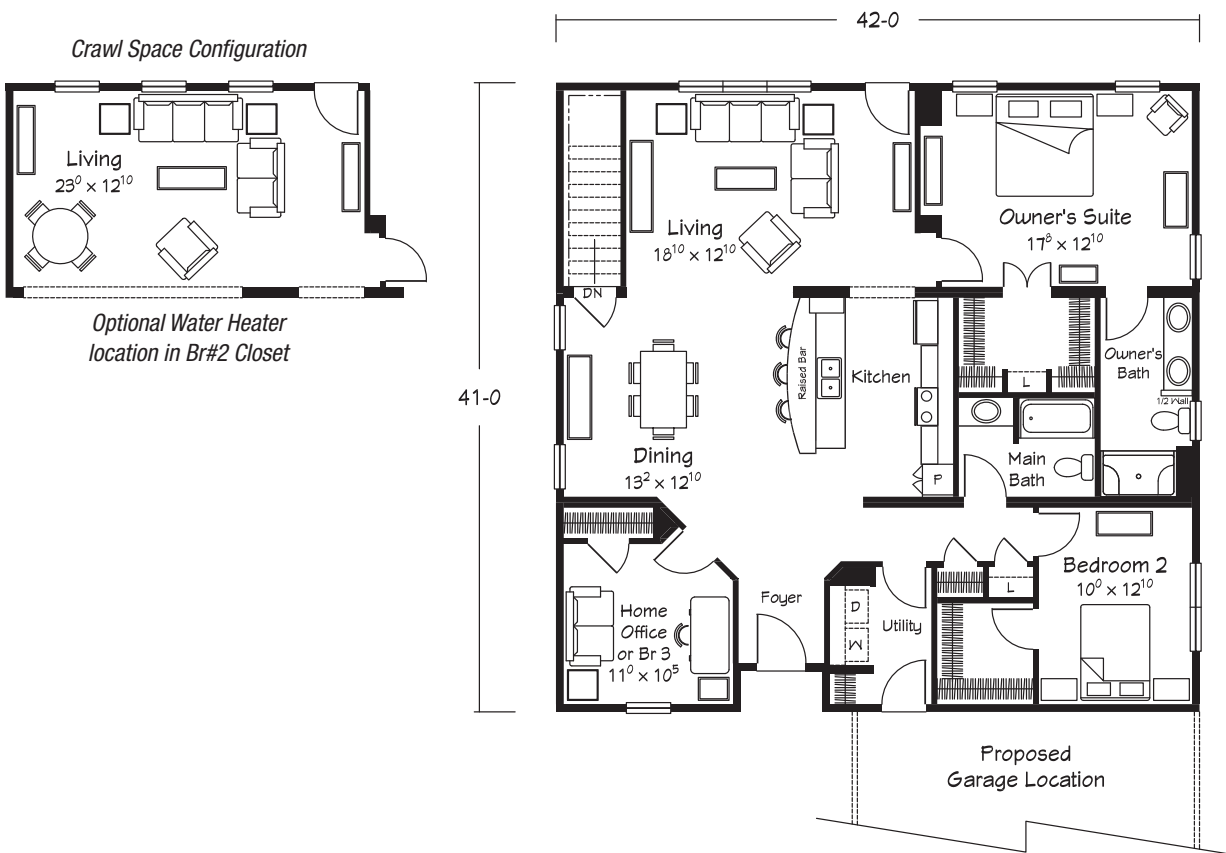
Total "sq. ft. Living Area" does not include garage or porch square footage.



Shown with site built garage.

## ANGELA III Ranch

3 Bedrooms • 2 Baths  
1711 sq. ft. Living Area



Total "sq. ft. Living Area" does not include garage or porch square footage.



Shown with site built garage and porch.

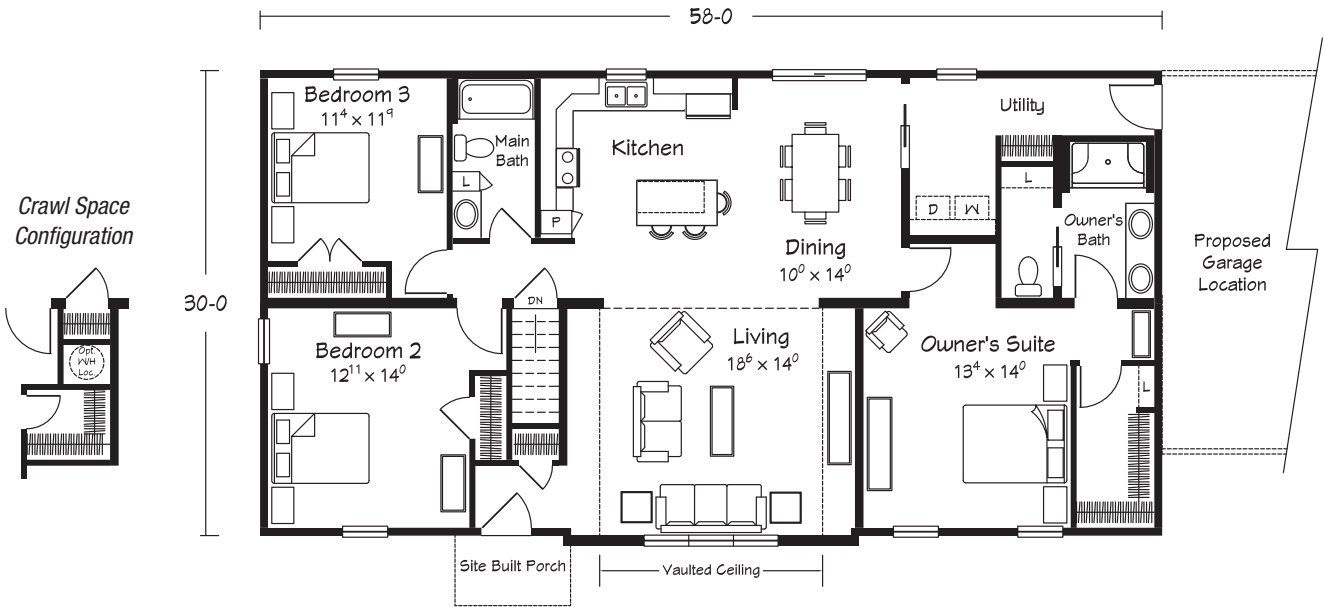


# JACOB'S CREEK I

## Ranch

3 Bedrooms · 2 Baths

1747 sq. ft. Living Area



Total "sq. ft. Living Area" does not include garage or porch square footage.





Shown with site built garage and porch.

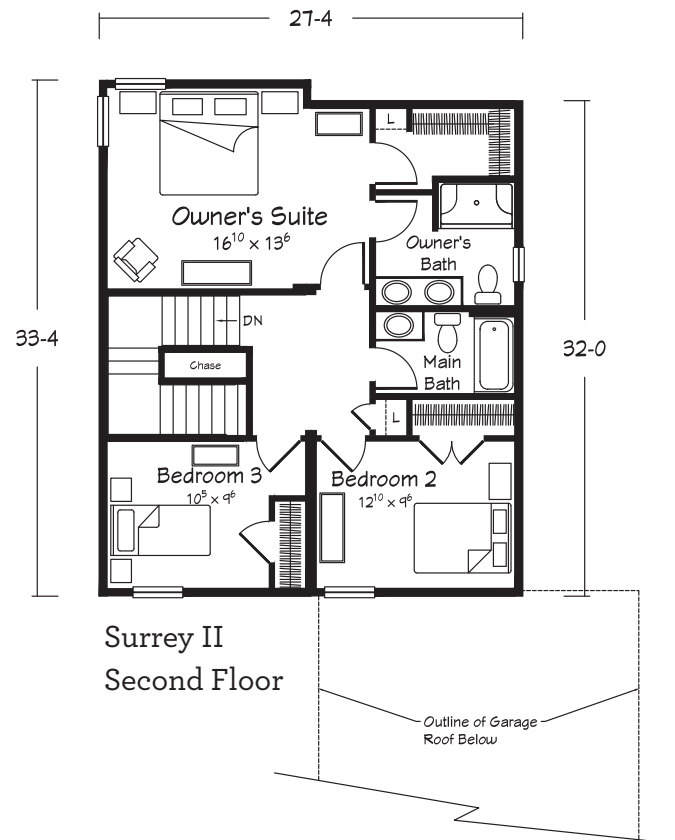
## SURREY II

### Two Story

3 Bedrooms • Home Office • 2.5

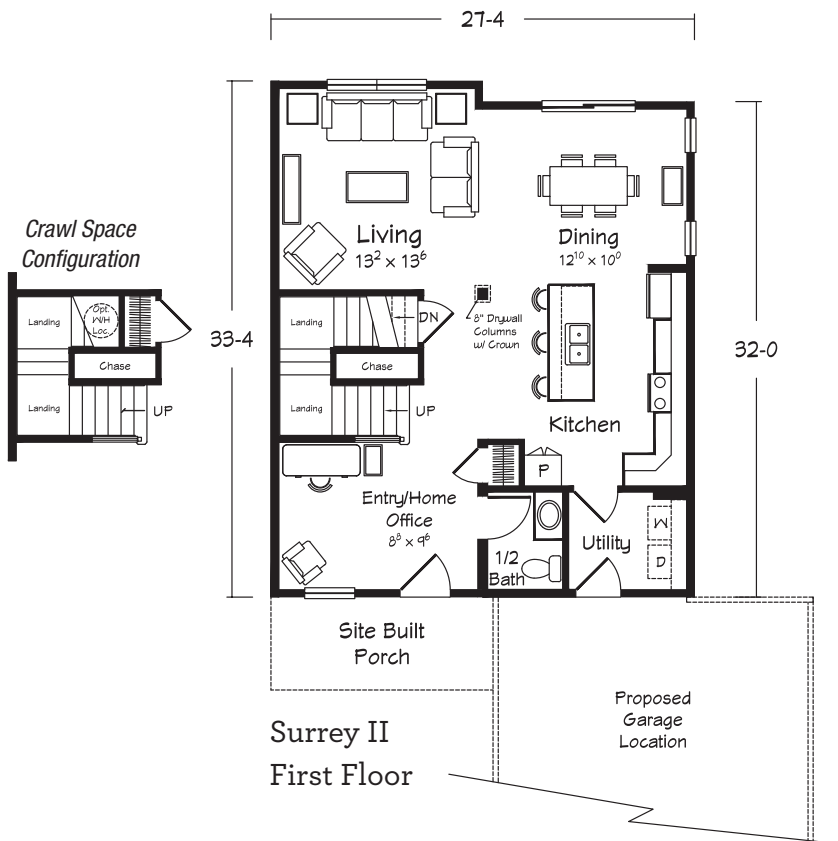
Baths

1786 sq. ft. Living Area



Surrey II  
Second Floor

Outline of Garage  
Roof Below



Surrey II  
First Floor

Total "sq. ft. Living Area" does not include garage or porch square footage.



Shown with site built garage.

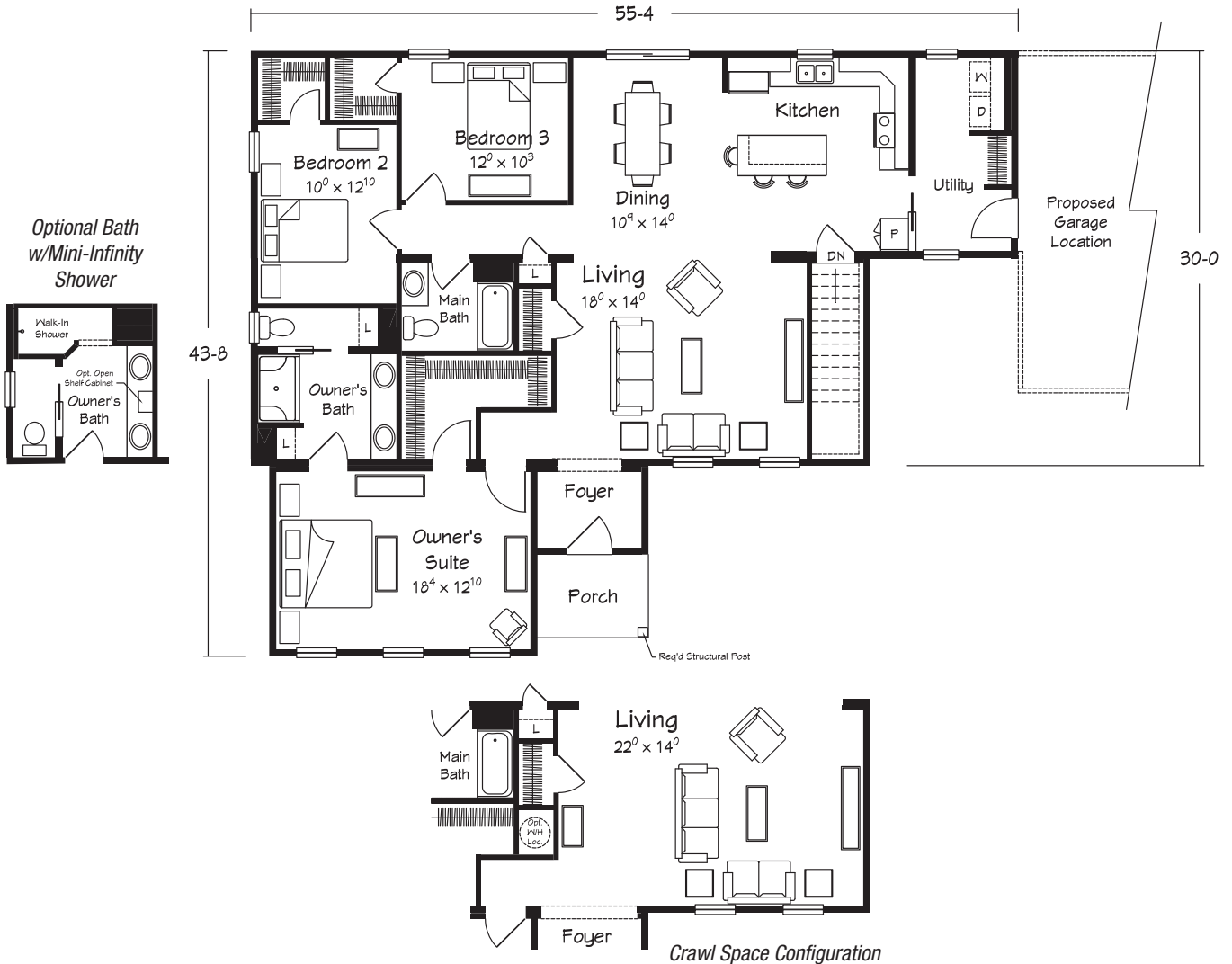


## MERRYWEATHER II

### Ranch

3 Bedrooms • 2 Baths

1813 sq. ft. Living Area



Total "sq. ft. Living Area" does not include garage or porch square footage.



Shown with integral (right side) garage and site built second garage.

# AVALON

## Bungalow

3 Bedrooms • 2 Baths

1818 sq. ft. Living Area



Total "sq. ft. Living Area" does not include garage or porch square footage.



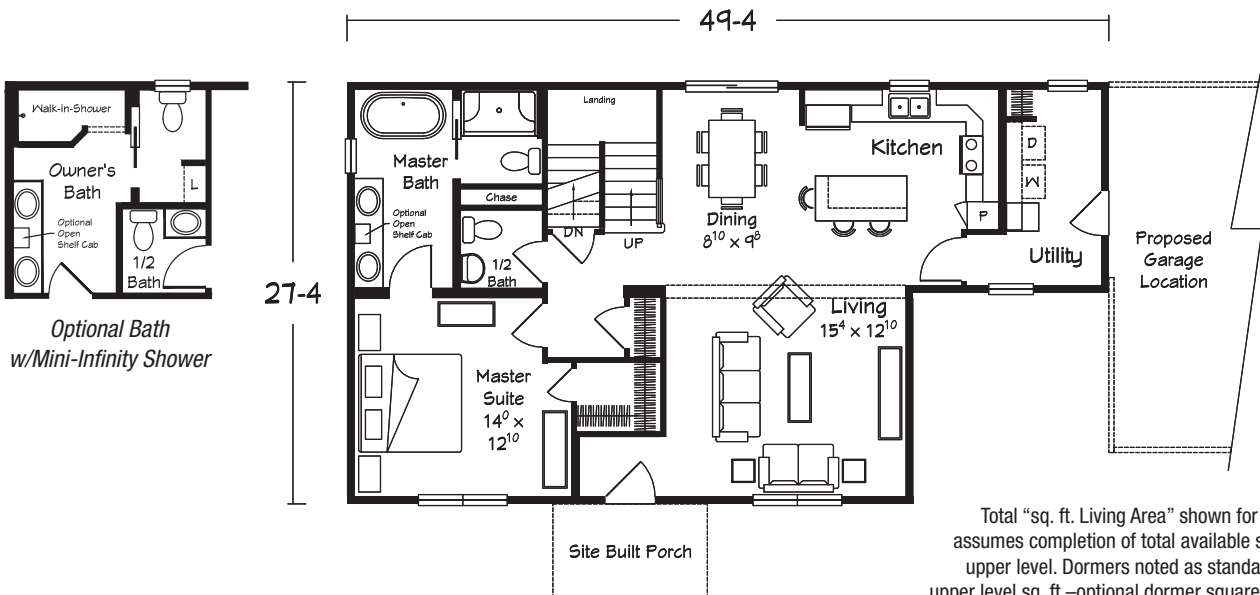
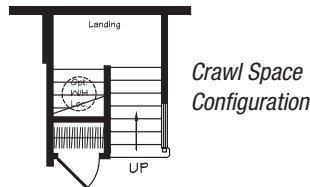
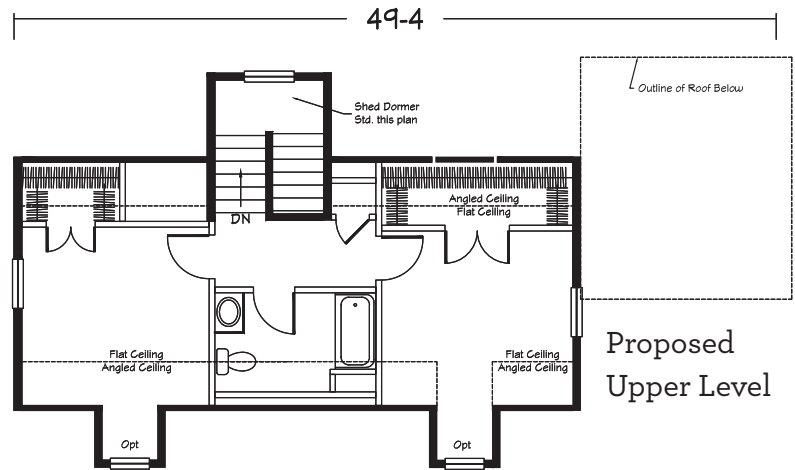
Shown with site built garage and porch.



## JUPITER BAY Cape Cod

3 Bedrooms · 2.5 Baths  
1821 sq. ft. Living Area

(includes completion of  
646 sq. ft. Upper Level Area)



Total "sq. ft. Living Area" shown for Cape Cod style plans assumes completion of total available square footage on the upper level. Dormers noted as standard are included in the upper level sq. ft.—optional dormer square footage is not. Finish materials and fixtures are not included. The proposed upper level must be site-finished by your selected builder.

Total "sq. ft. Living Area" does not include garage or porch square footage.

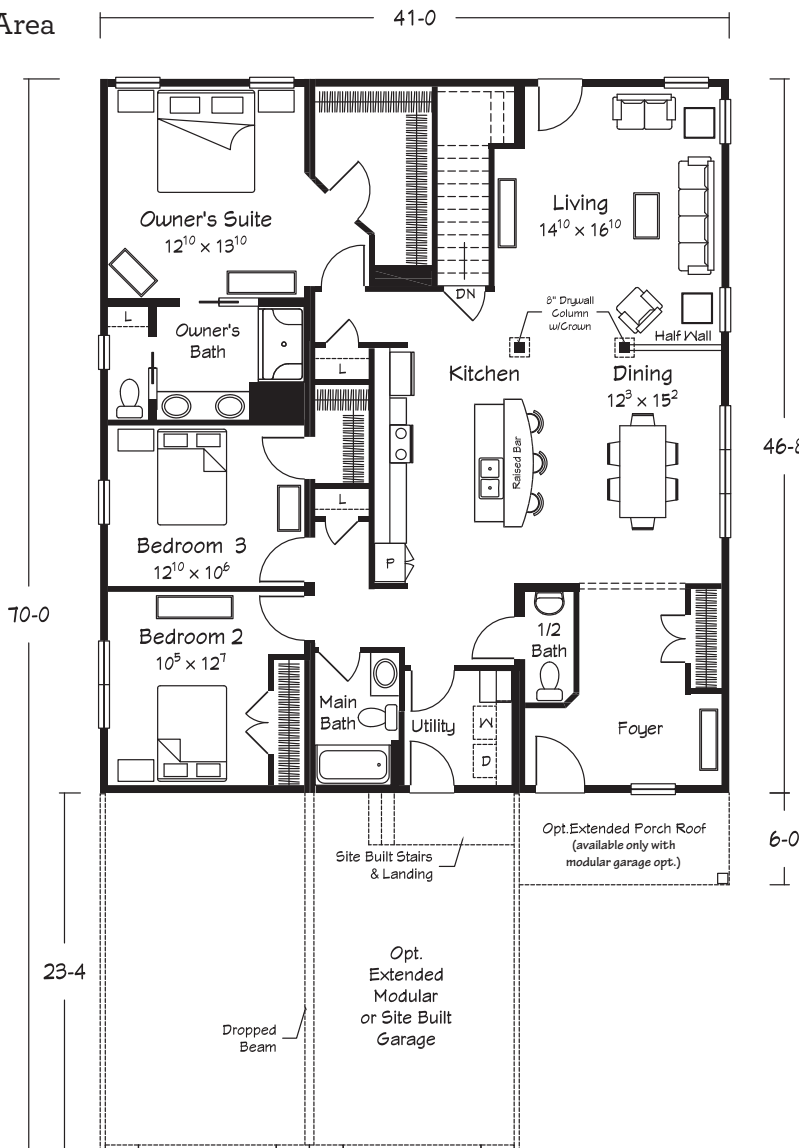


Shown with optional integral garage and porch.

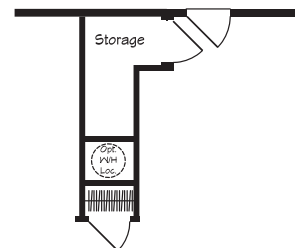
# JAYNESVILLE III

## Ranch

3 Bedrooms · 2.5 Baths  
1867 sq. ft. Living Area



Crawl Space Configuration



Total "sq. ft. Living Area" does not include garage or porch square footage.

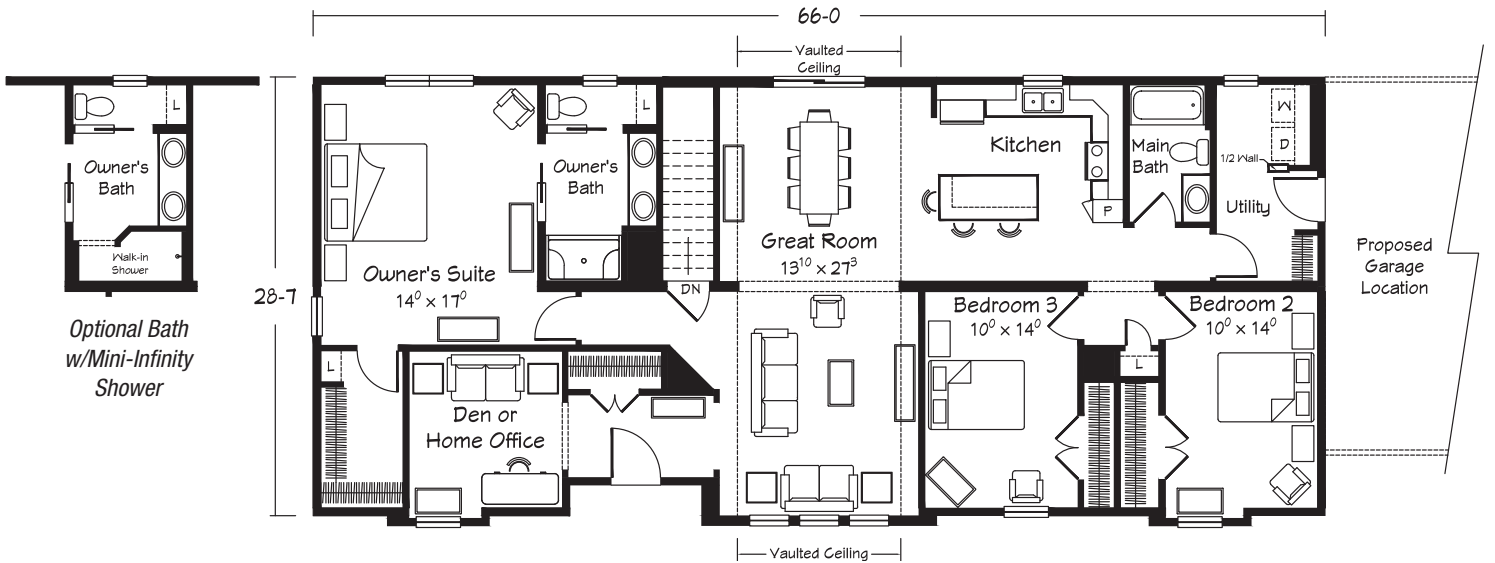
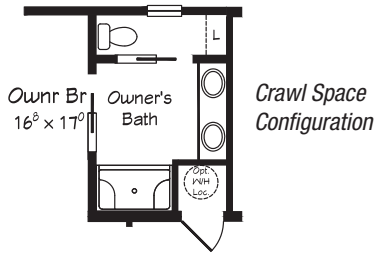


# JACOB'S CREEK II

## Ranch

3 Bedrooms • Home Office • 2 Baths

1891 sq. ft. Living Area



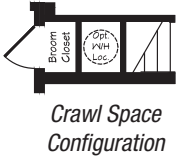
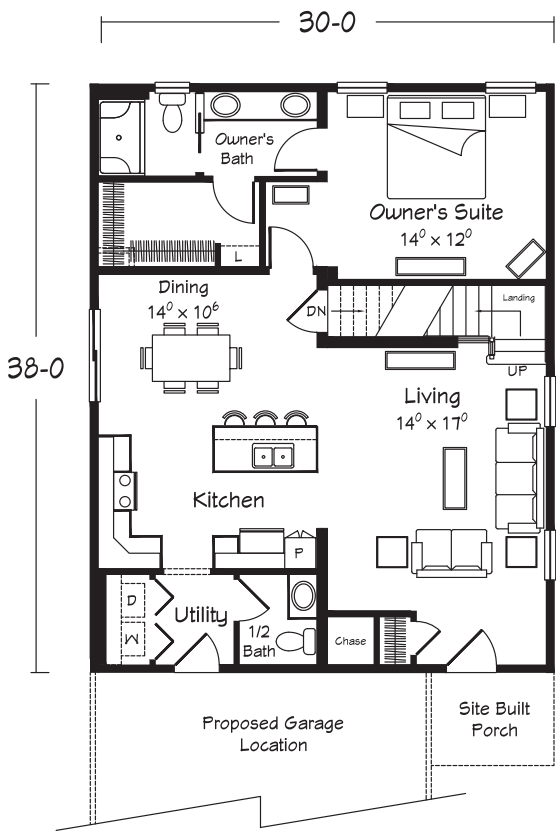


Shown with site built garage and porch.

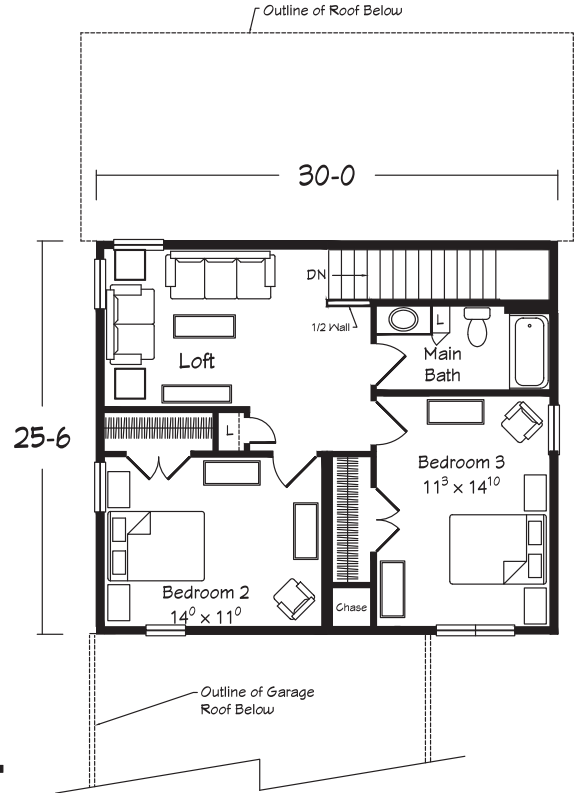
# SINCLAIR

## Two Story

3 Bedrooms • Loft • 2.5 Baths  
1905 sq. ft. Living Area



Sinclair First Floor



Sinclair Second Floor

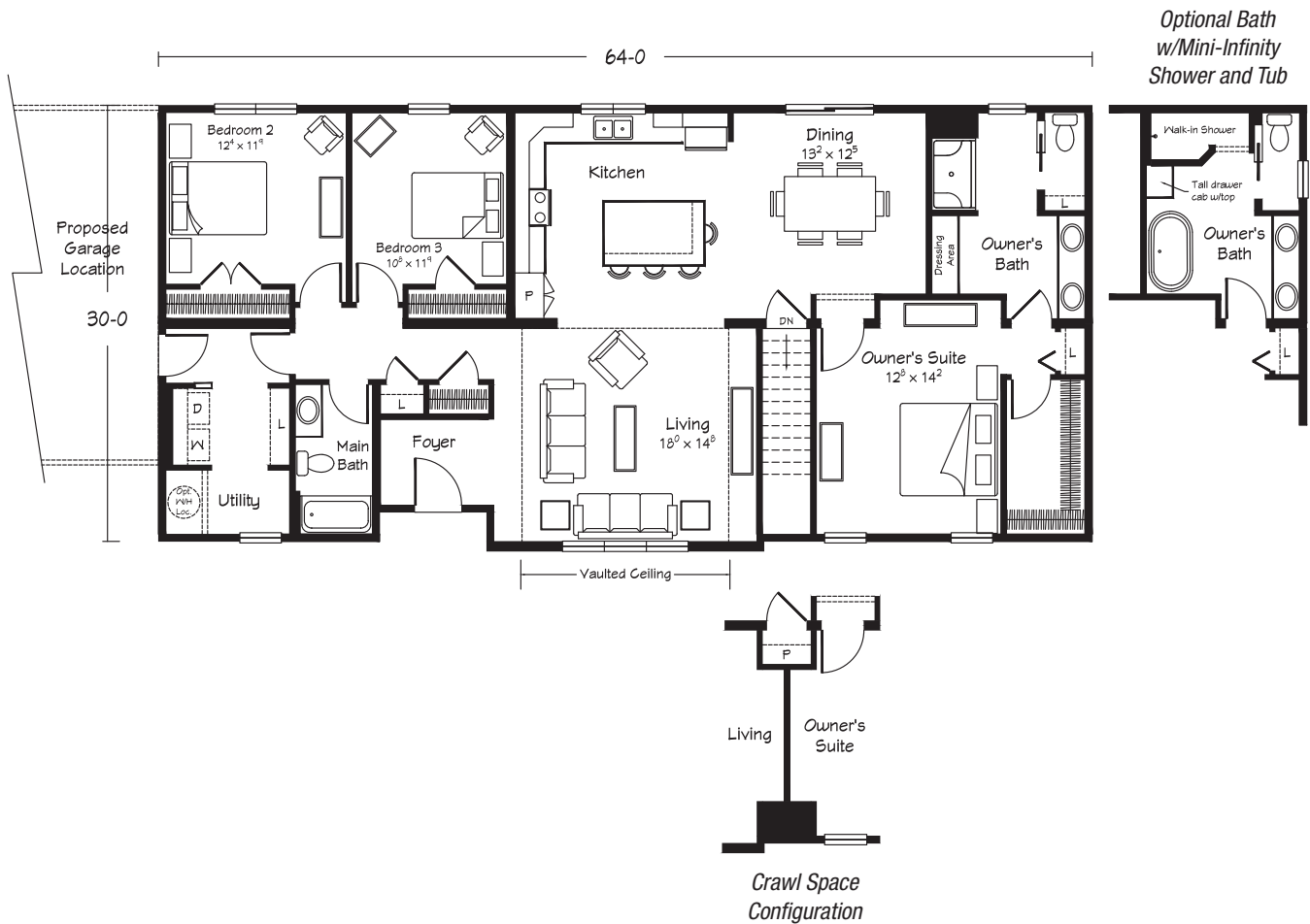
Artist's renderings depict homes as they may be built on a typical site. Renderings may show optional or site installed features. Some elevations include uniquely designed standard features. Refer to Ritz-Craft's "American Dream Benchmark Specifications & Plan-Specific Drawings" to review standard and optional features. Be sure to thoroughly discuss all aspects of your building project with your selected homebuilder.



Shown with site built garage.

## OTTER CREEK Ranch

3 Bedrooms • 2 Baths  
1910 sq. ft. Living Area



Total "sq. ft. Living Area" does not include garage or porch square footage.





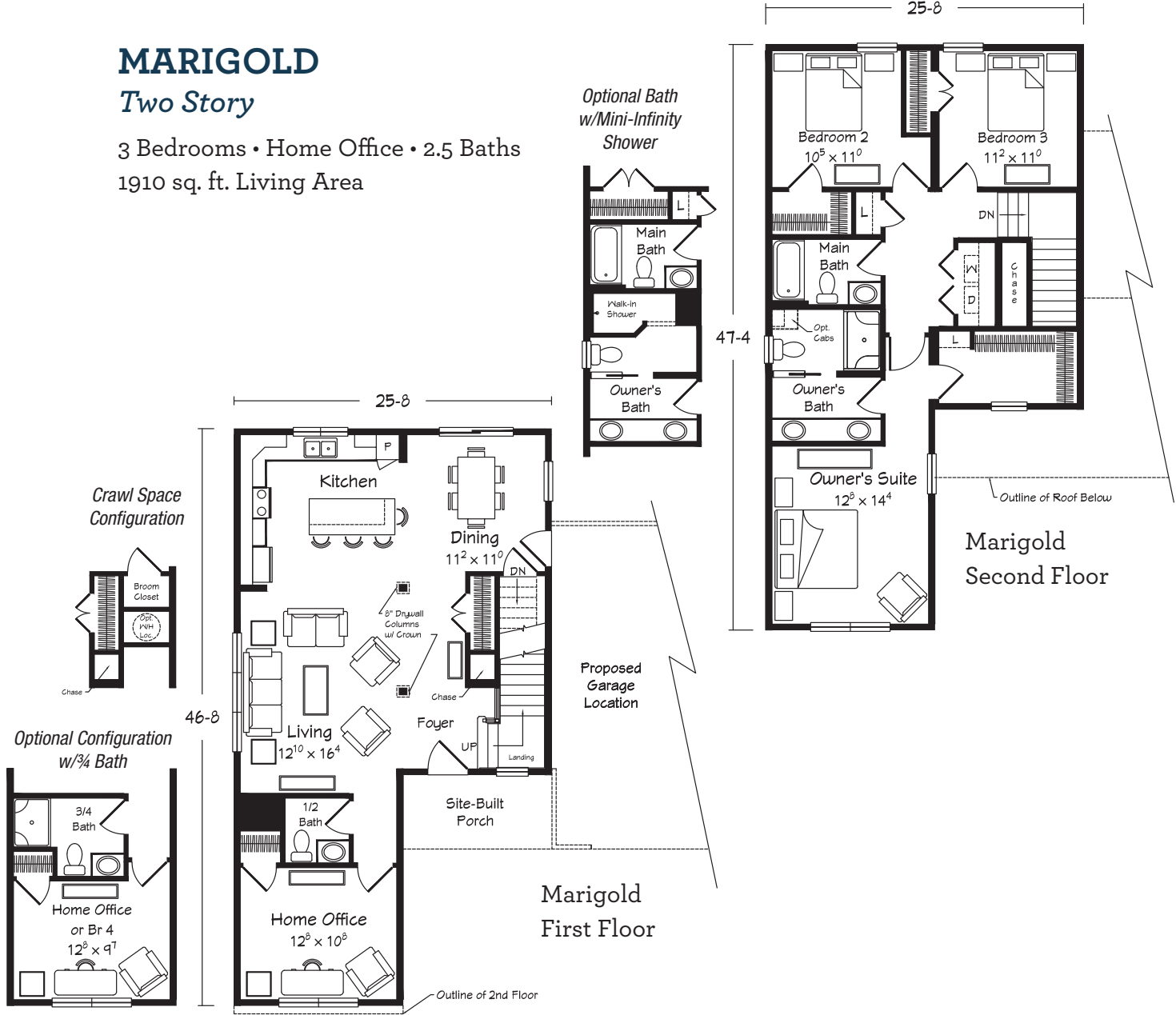
Shown with site built garage and porch.



# MARIGOLD

## Two Story

3 Bedrooms • Home Office • 2.5 Baths  
1910 sq. ft. Living Area



Total "sq. ft. Living Area" does not include garage or porch square footage.

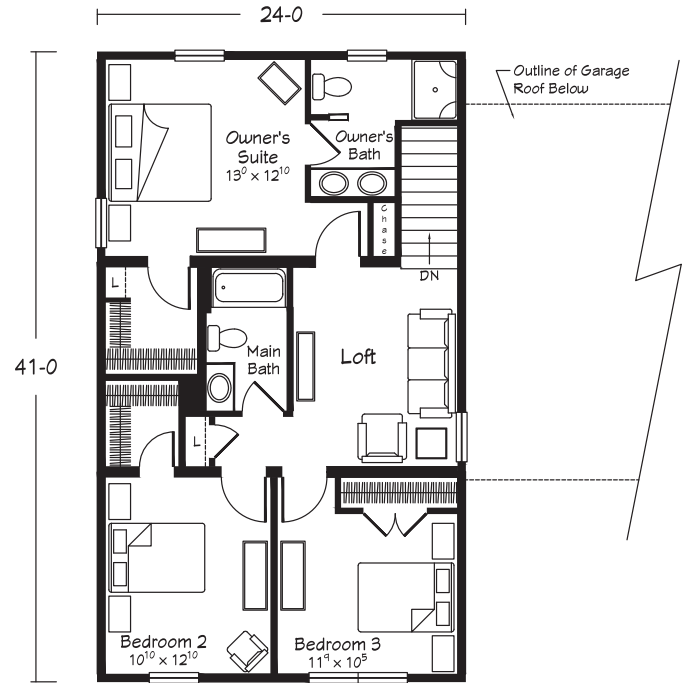
Artist's renderings depict homes as they may be built on a typical site. Renderings may show optional or site installed features. Some elevations include uniquely designed standard features. Refer to Ritz-Craft's "American Dream Benchmark Specifications & Plan-Specific Drawings" to review standard and optional features. Be sure to thoroughly discuss all aspects of your building project with your selected homebuilder.



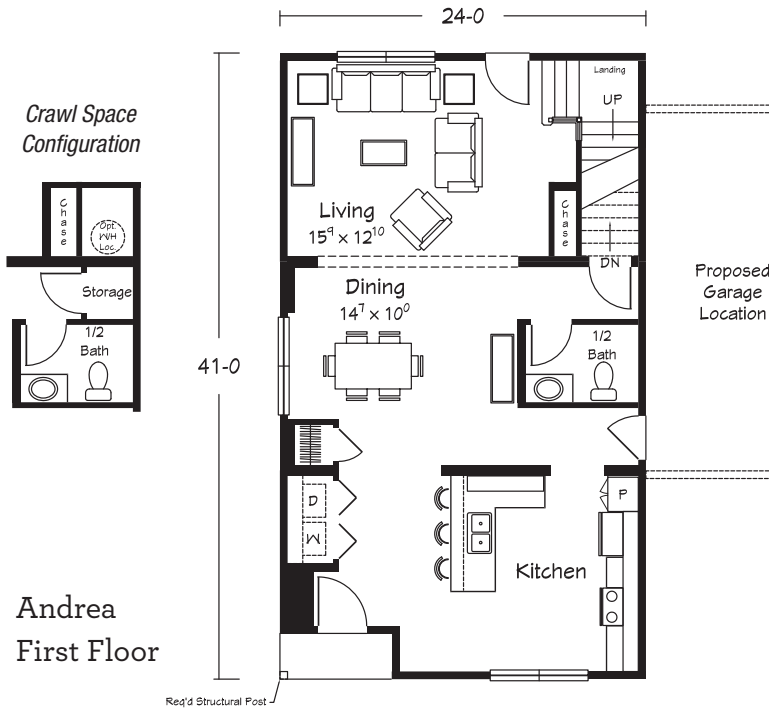
Shown with site built garage.

## ANDREA Two Story

3 Bedrooms • Loft • 2.5 Baths  
1950 sq. ft. Living Area



Andrea  
Second Floor



Andrea  
First Floor

Total "sq. ft. Living Area" does not include garage or porch square footage.

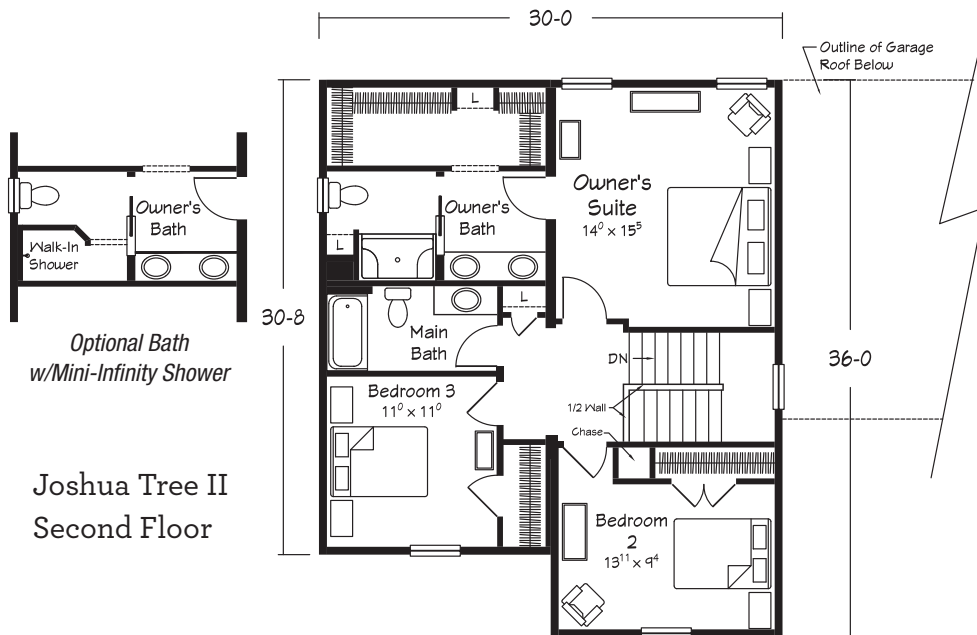


Shown with site built garage and porch.

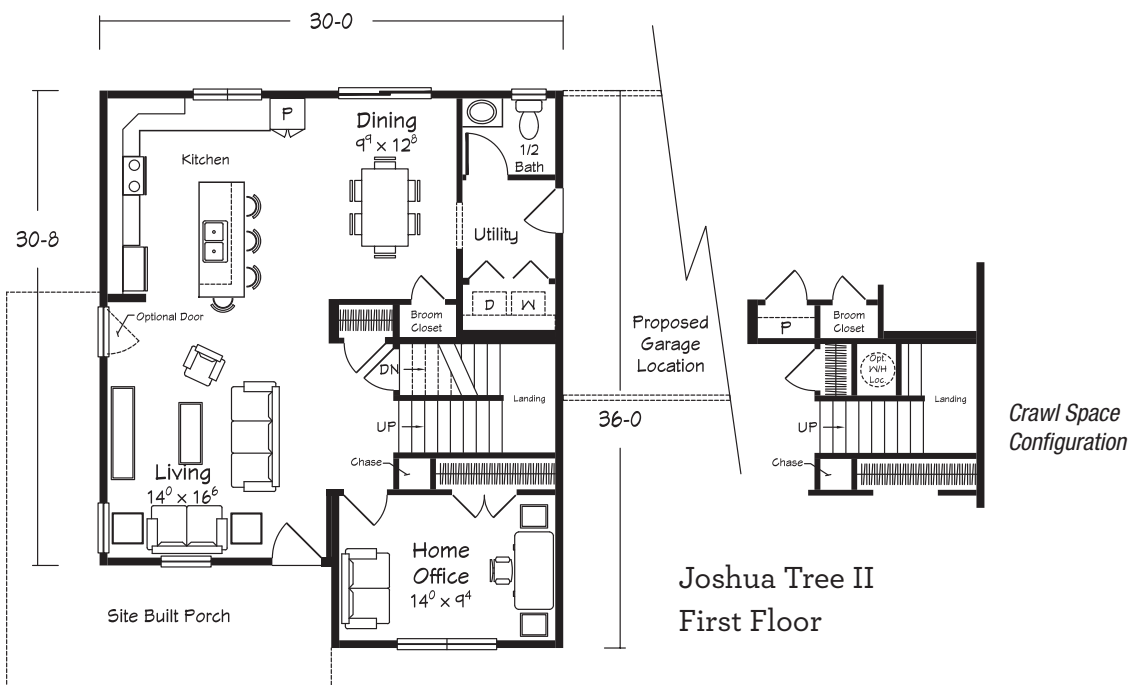
## JOSHUA TREE II

### Two Story

3 Bedrooms · Home Office  
2.5 Baths  
2000 sq. ft. Living Area



Joshua Tree II  
Second Floor



Joshua Tree II  
First Floor

Total "sq. ft. Living Area" does not include garage or porch square footage.



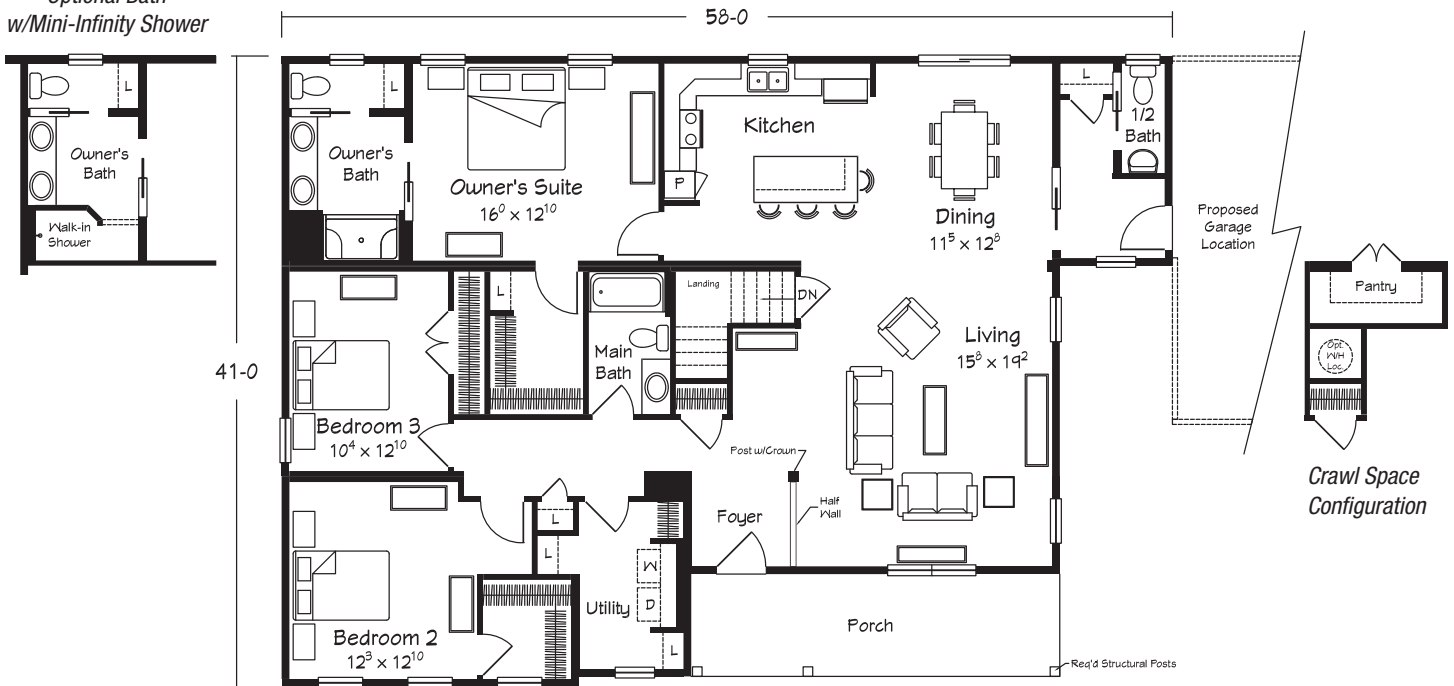
Shown with site built garage.



## DARBY III Ranch

3 Bedrooms • 2.5 Baths  
2003 sq. ft. Living Area

Optional Bath  
w/Mini-Infinity Shower



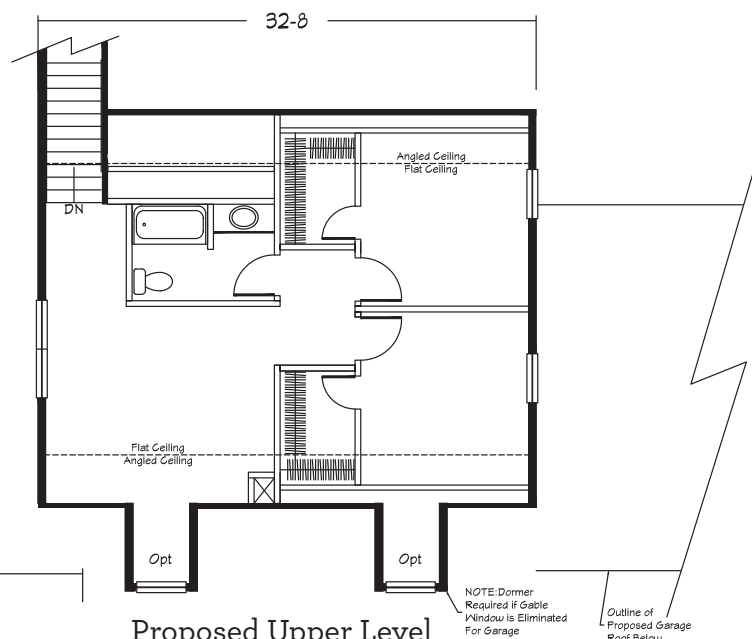
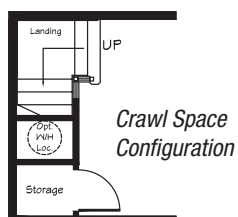
Total "sq. ft. Living Area" does not include garage or porch square footage.



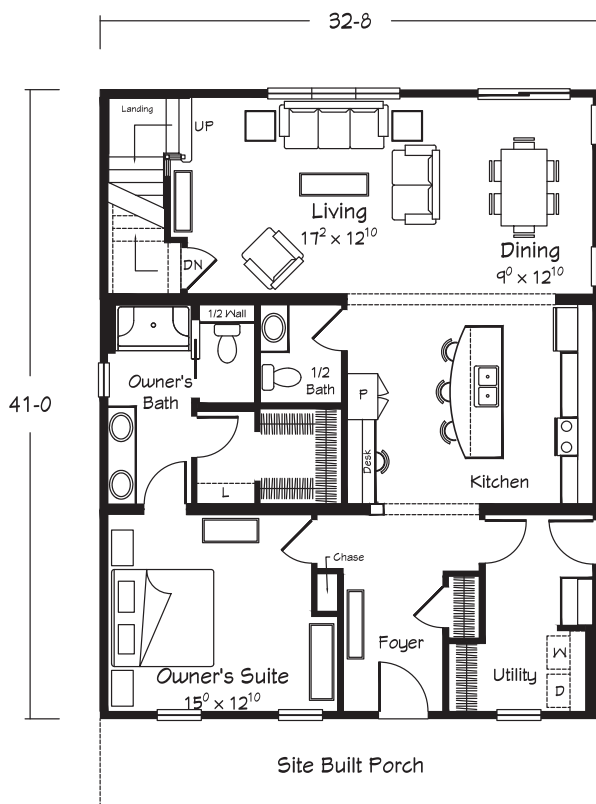
Shown with site built garage and porch.

## JUNO II Cape Cod

3 Bedrooms • 2.5 Baths  
2007 sq. ft. Living Area  
(includes completion of  
665 sq. ft. Upper Level Area)



Optional Bath  
w/Mini-Infinity  
Shower



Total "sq. ft. Living Area" shown for Cape Cod style plans assumes completion of total available square footage on the upper level. Dormers noted as standard are included in the upper level sq. ft.—optional dormer square footage is not. Finish materials and fixtures are not included. The proposed upper level must be site-finished by your selected builder.

Total "sq. ft. Living Area" does not include garage or porch square footage.



Shown with site built garage.



## TRIPLE CROWN II

### Ranch

3 Bedrooms • Den/Home Office • 2 Baths

2009 sq. ft. Living Area



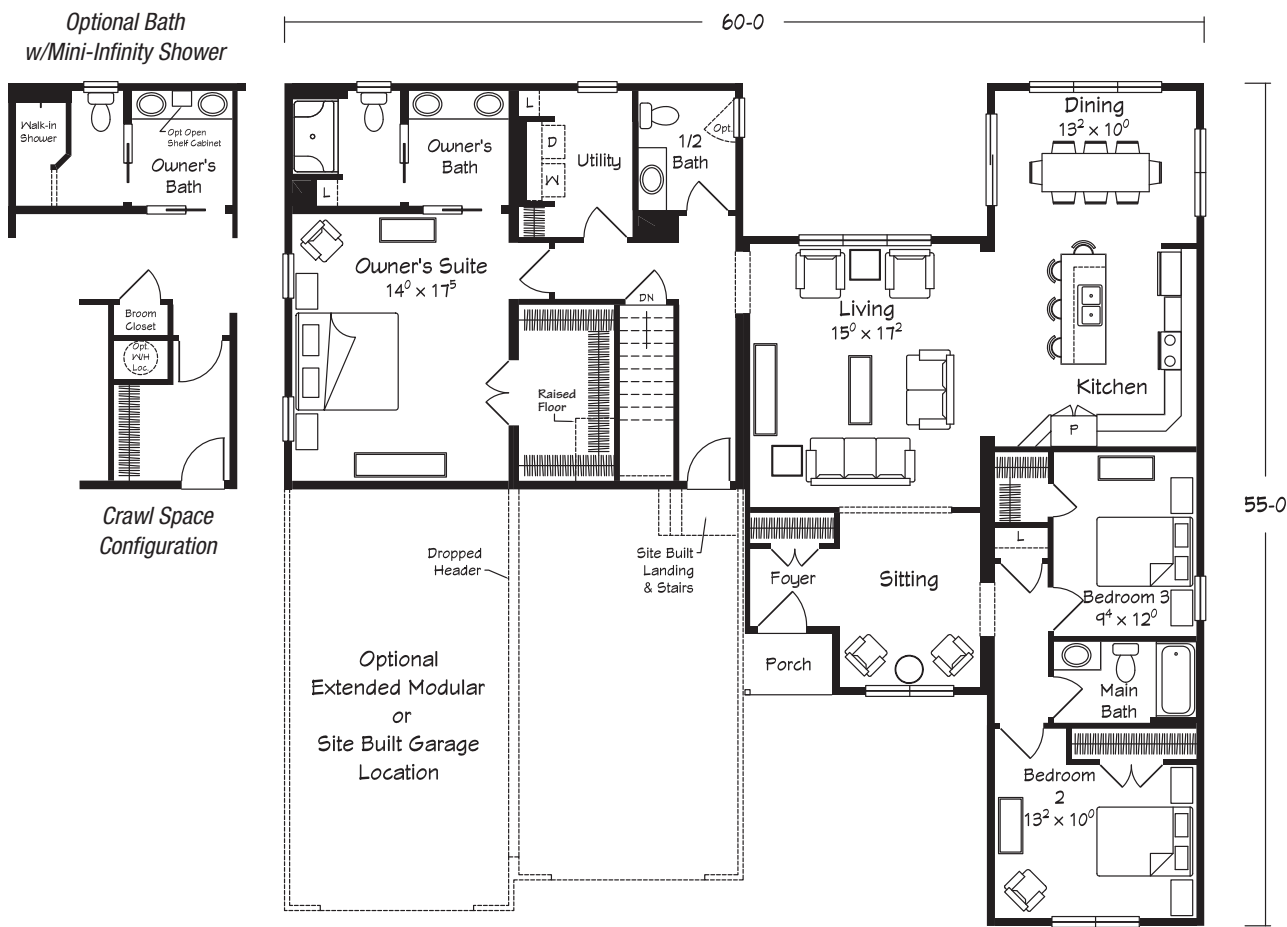
Total "sq. ft. Living Area" does not include garage or porch square footage.



Shown with site built garage.

## SHEFFIELD III Ranch

3 Bedrooms · 2.5 Baths  
2026 sq. ft. Living Area



Total "sq. ft. Living Area" does not include garage or porch square footage.

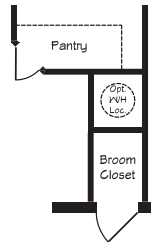


Shown with site built garage.

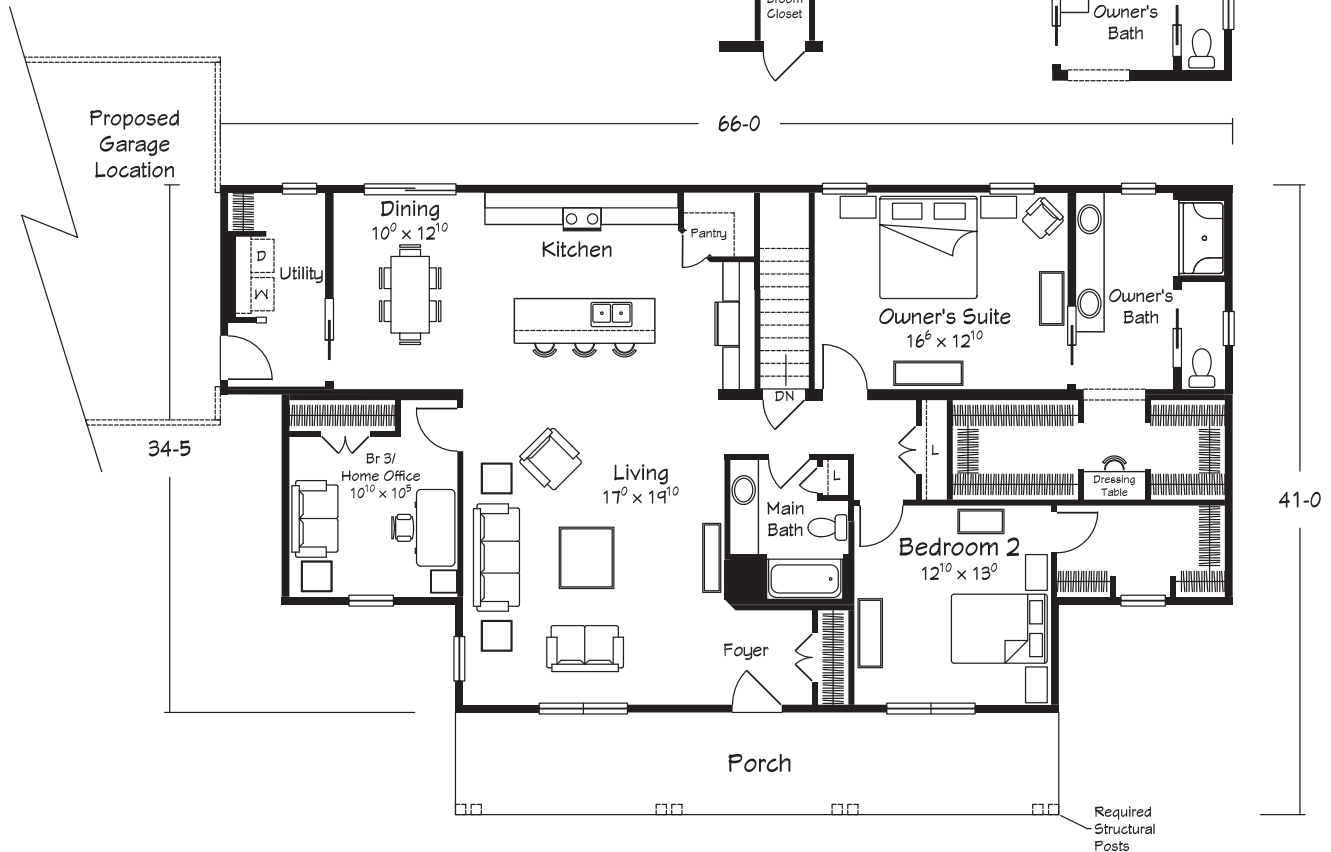
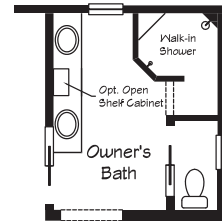
## NEWPORT II Ranch

3 Bedrooms • 2 Baths  
2029 sq. ft. Living Area

Crawl Space Configuration



Optional Bath w/Mini-Infinity Shower  
(Reduces Owner's Suite to 15-6)



Total "sq. ft. Living Area" does not include garage or porch square footage.

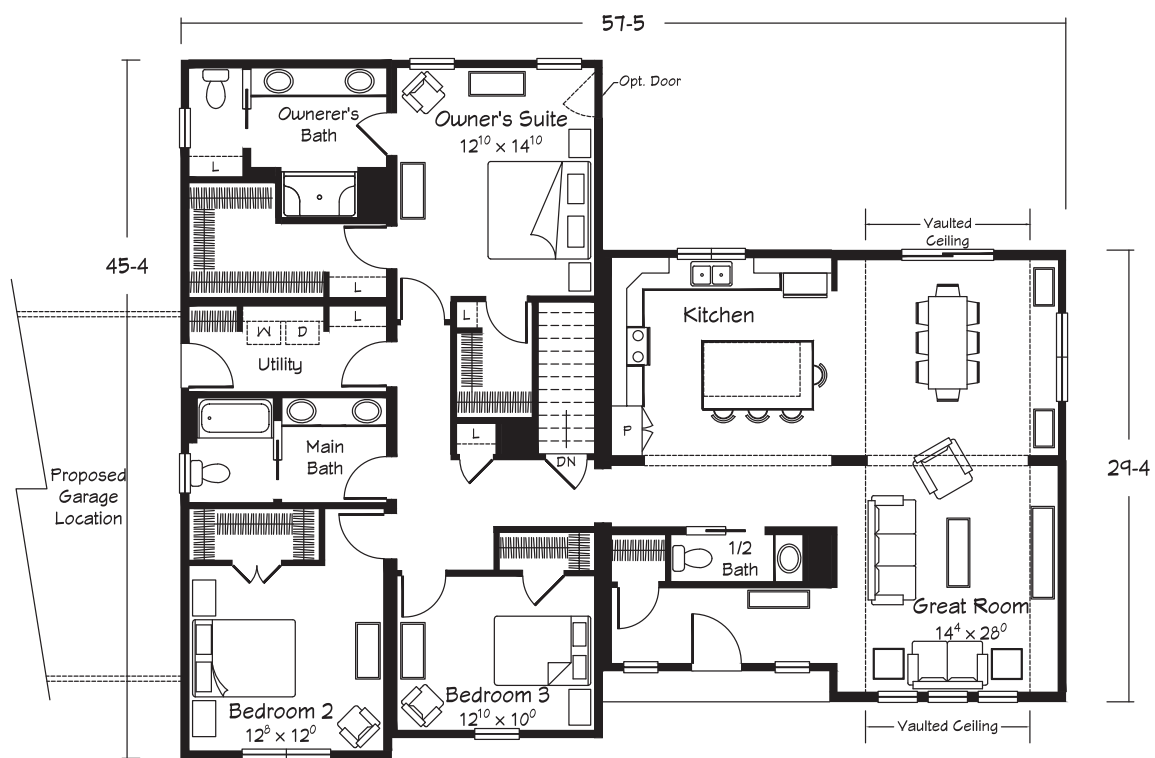
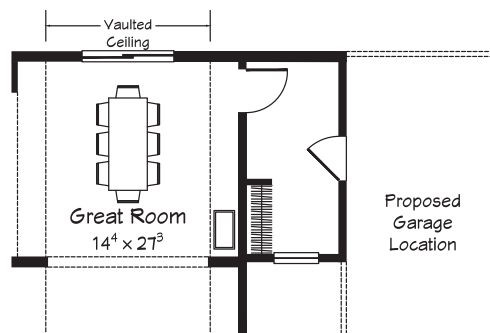




# JACOB'S CREEK III Ranch

3 Bedrooms • 2.5 Baths  
2074 sq. ft. Living Area

*Optional Mud Room Extension for Right Side  
Garage Attachment Converts Door in Utility  
Room to a Window*



Total "sq. ft. Living Area" does not include garage or porch square footage.

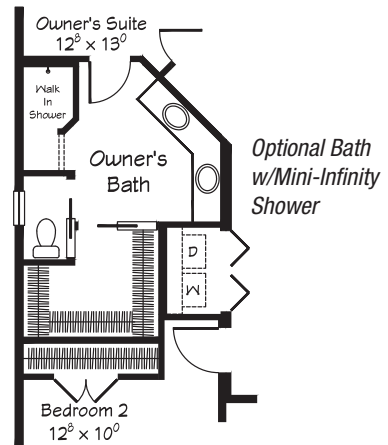
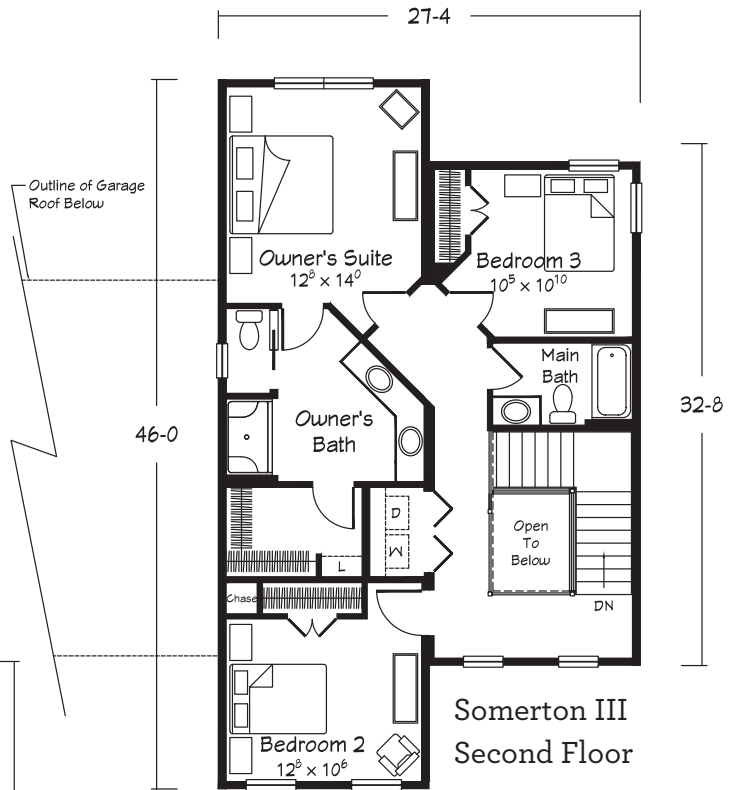
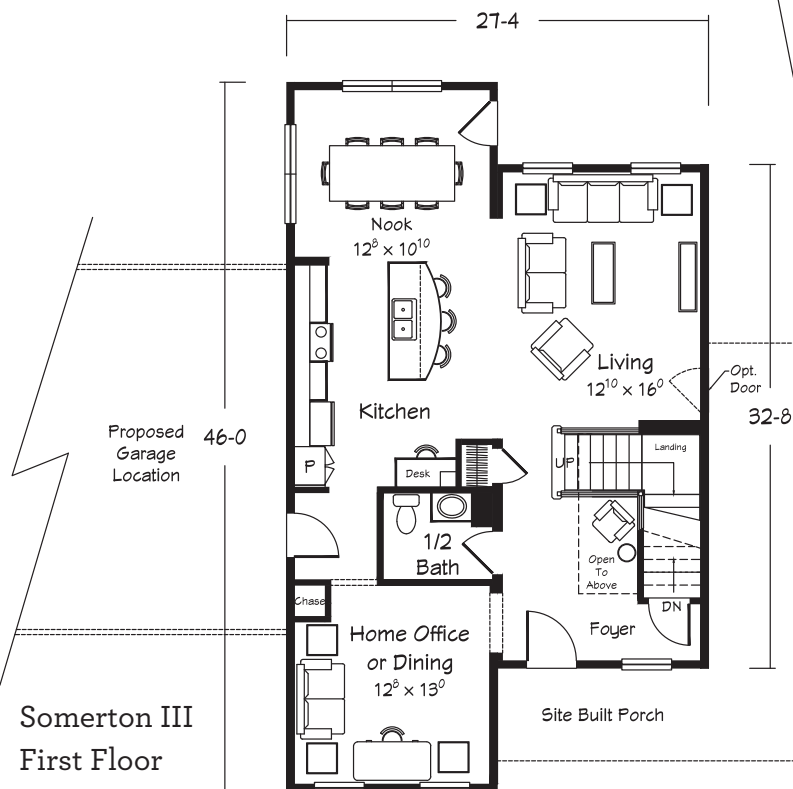


Shown with site built garage and porch.

## SOMERTON III

### Two Story

3 Bedrooms • Home Office • 2.5 Baths  
2150 sq. ft. Living Area



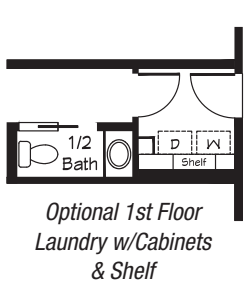
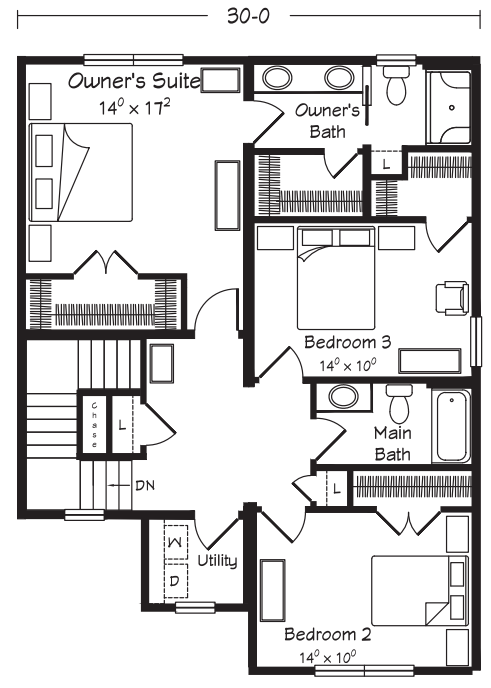
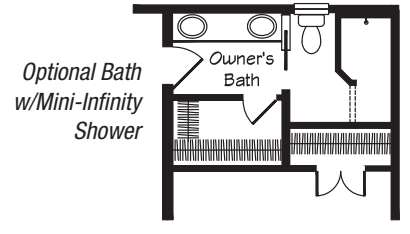
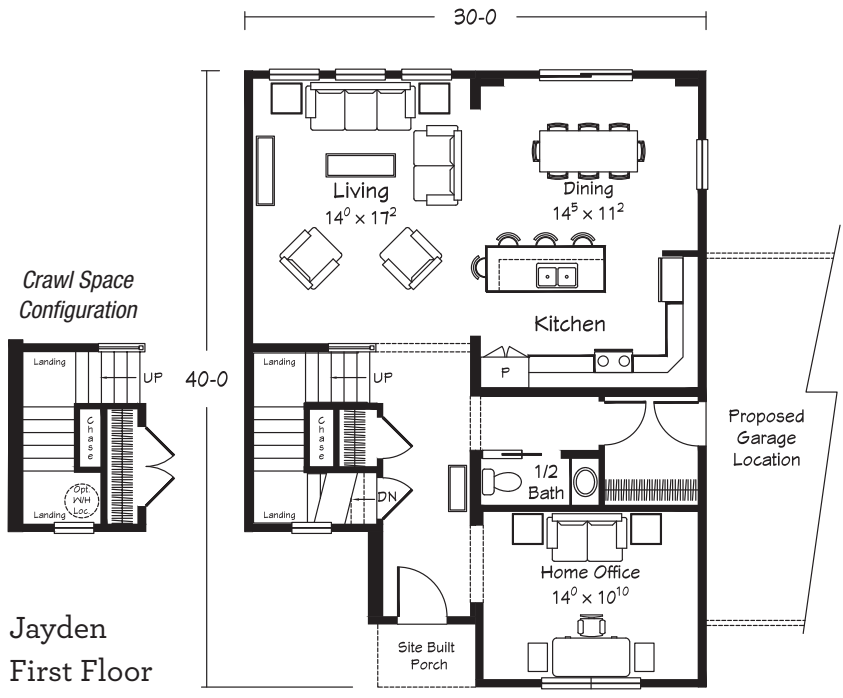
Total "sq. ft. Living Area" does not include garage or porch square footage.



Shown with site built garage and porch.

# JAYDEN Two Story

3 Bedrooms • Home Office • 2.5 Baths  
2176 sq. ft. Living Area



Total "sq. ft. Living Area" does not include garage or porch square footage.



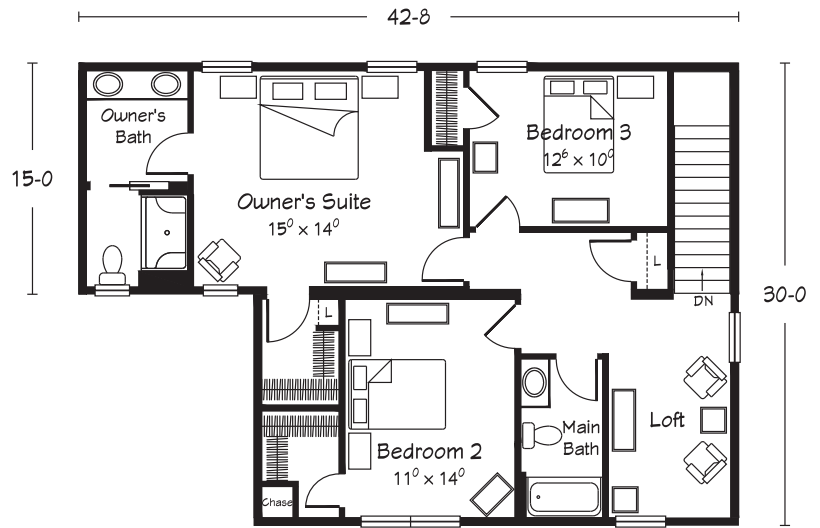
Shown with site built garage and porch.

## DERRYVILLE

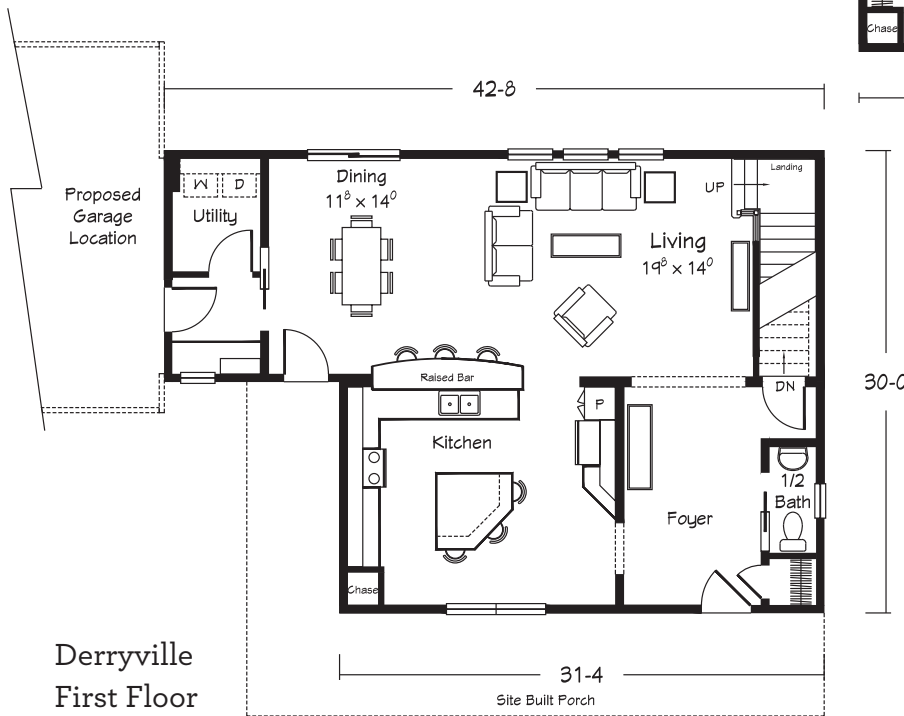
### Two Story

3 Bedrooms • Loft • 2.5 Baths

2214 sq. ft. Living Area



Derryville  
Second Floor



Derryville  
First Floor

Total "sq. ft. Living Area" does not include garage or porch square footage.

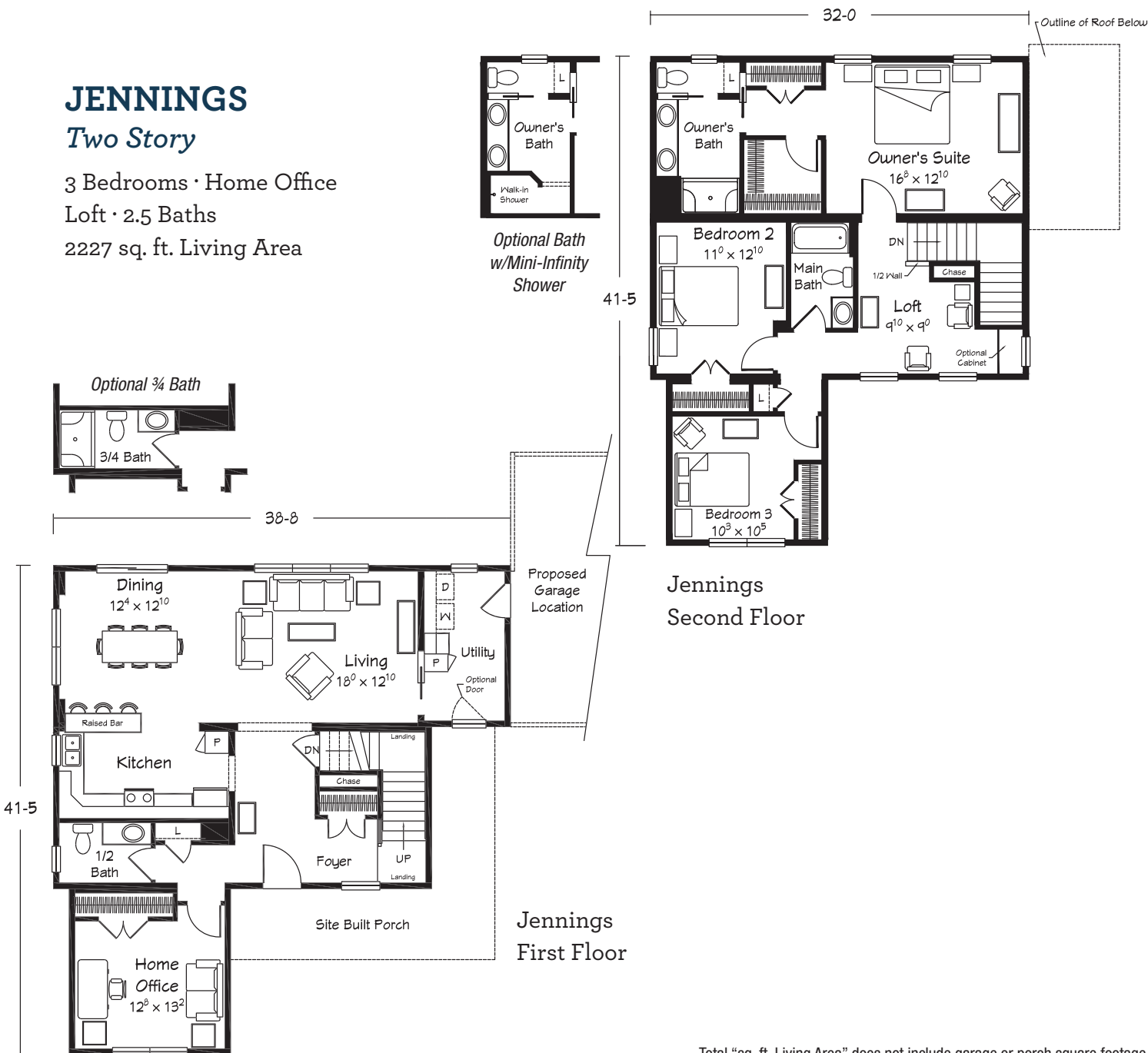


Shown with site built garage.

# JENNINGS

## Two Story

3 Bedrooms · Home Office  
Loft · 2.5 Baths  
2227 sq. ft. Living Area



Total "sq. ft. Living Area" does not include garage or porch square footage.



Shown with site built garage and porch.

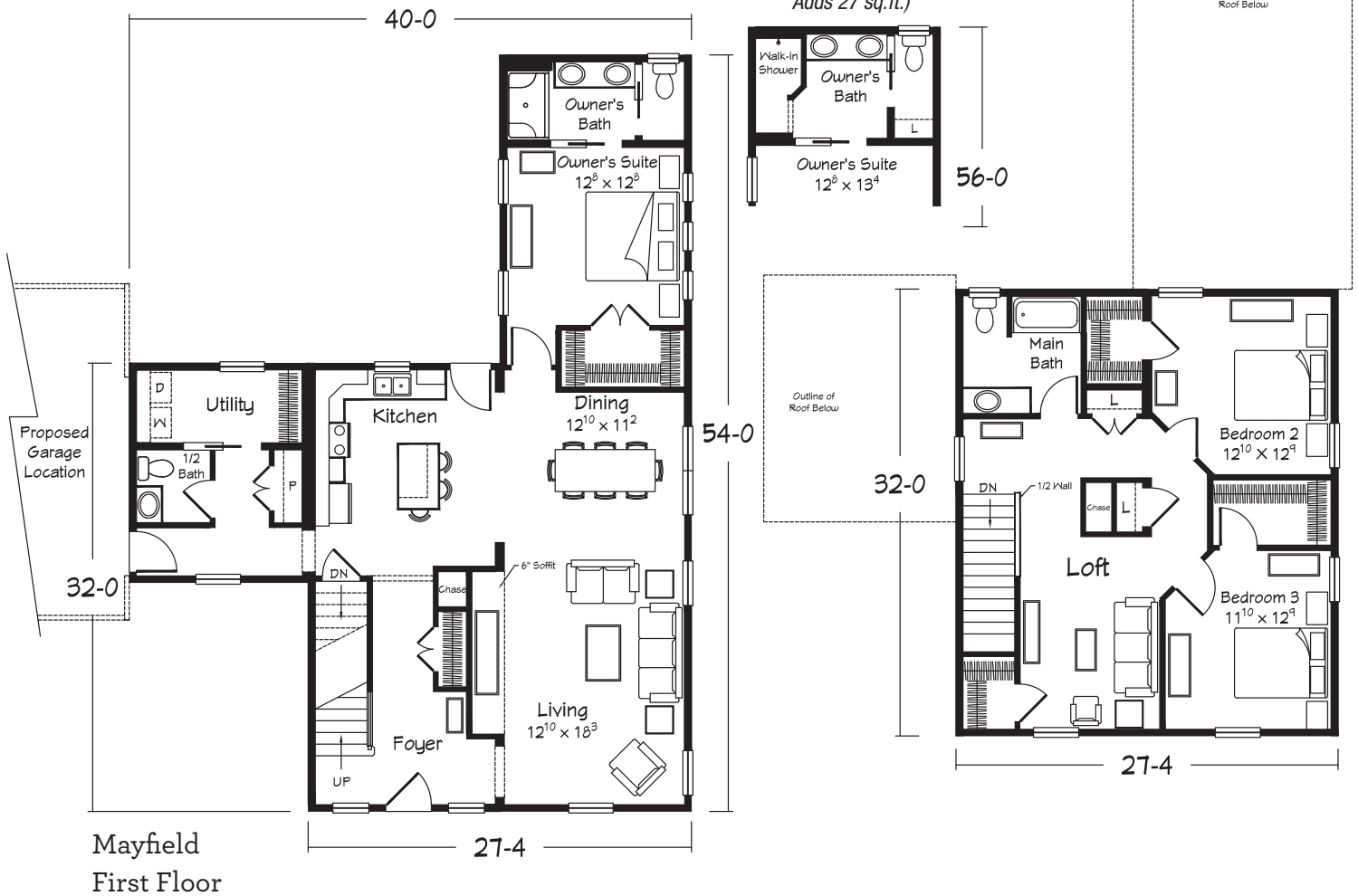
# MAYFIELD

## Two Story

3 Bedrooms • Loft • 2.5 Baths  
2249 sq. ft. Living Area

*Optional Bath  
w/Mini-Infinity  
Shower  
(Includes 2' Extension  
Adds 27 sq. ft.)*

### Mayfield Second Floor



Total "sq. ft. Living Area" does not include garage or porch square footage.

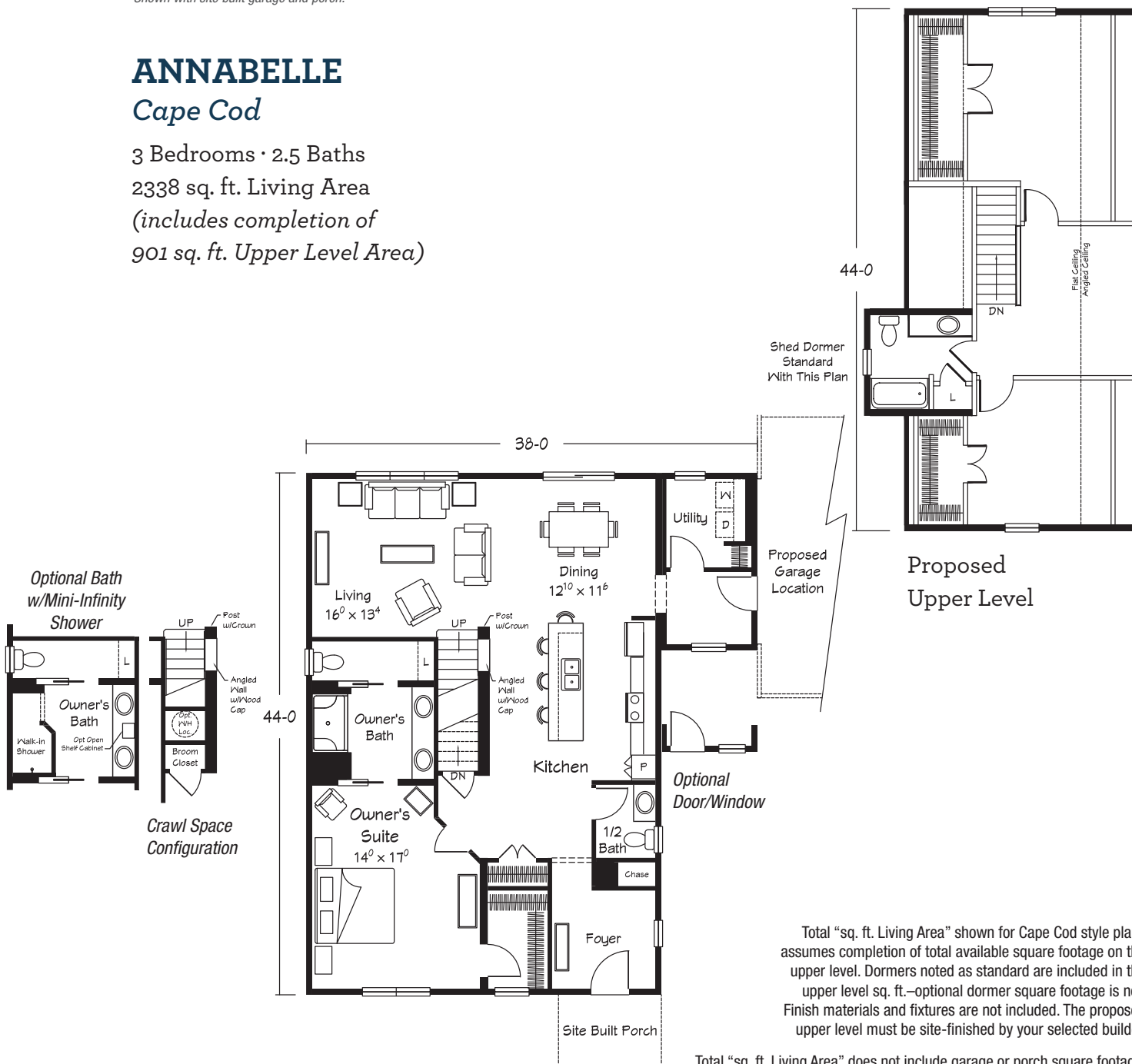


Shown with site built garage and porch.

# ANNABELLE

## Cape Cod

3 Bedrooms • 2.5 Baths  
 2338 sq. ft. Living Area  
 (includes completion of  
 901 sq. ft. Upper Level Area)



Total "sq. ft. Living Area" shown for Cape Cod style plans assumes completion of total available square footage on the upper level. Dormers noted as standard are included in the upper level sq. ft.—optional dormer square footage is not. Finish materials and fixtures are not included. The proposed upper level must be site-finished by your selected builder.

Total "sq. ft. Living Area" does not include garage or porch square footage.

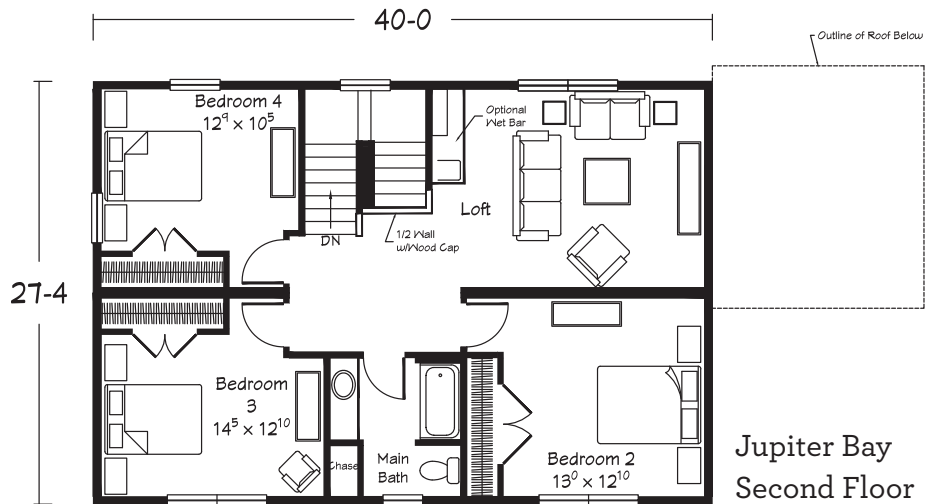


Shown with site built garage and porch.

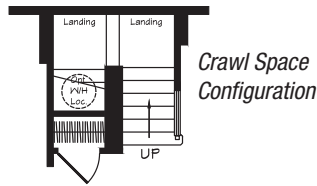
## JUPITER BAY

### Two Story

4 Bedrooms • Loft • 2.5 Baths  
2340 sq. ft. Living Area

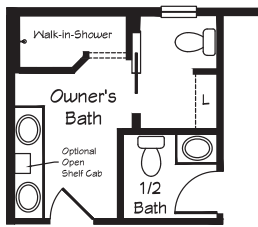


Jupiter Bay  
Second Floor



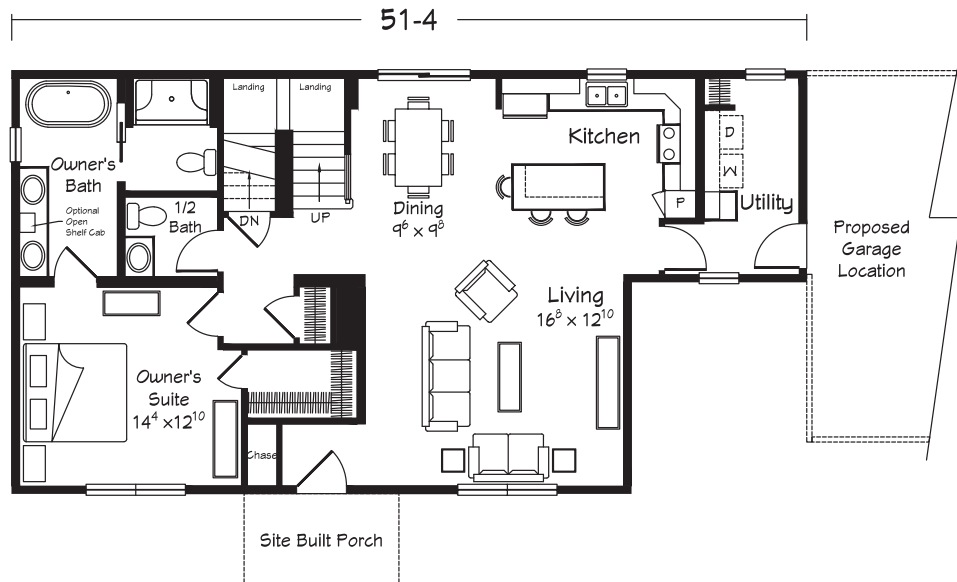
Crawl Space  
Configuration

Optional Bath  
w/Mini-Infinity  
Shower



27-4

Jupiter Bay  
First Floor



Site Built Porch

Proposed  
Garage  
Location

Total "sq. ft. Living Area" does not include garage or porch square footage.





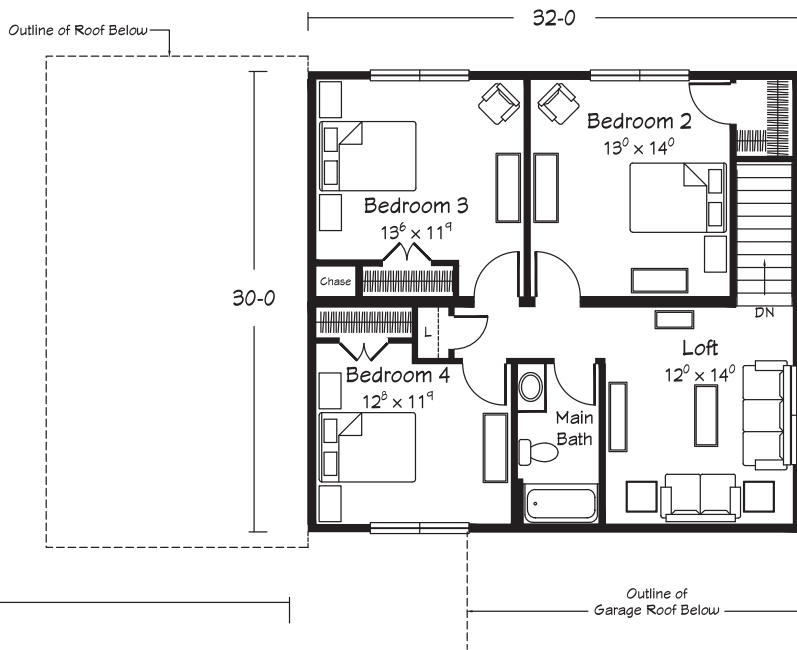
Shown with site built garage and porch.

# CRESTWOOD

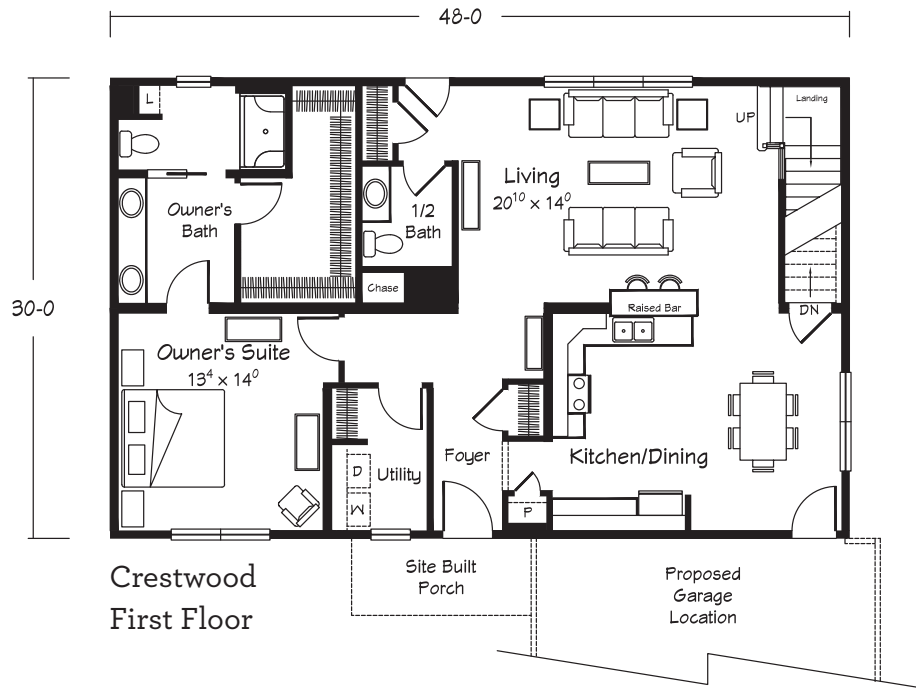
## Two Story

4 Bedrooms • Loft • 2.5 Baths

2400 sq. ft. Living Area



Crestwood Second Floor



Crestwood First Floor

Total "sq. ft. Living Area" does not include garage or porch square footage.

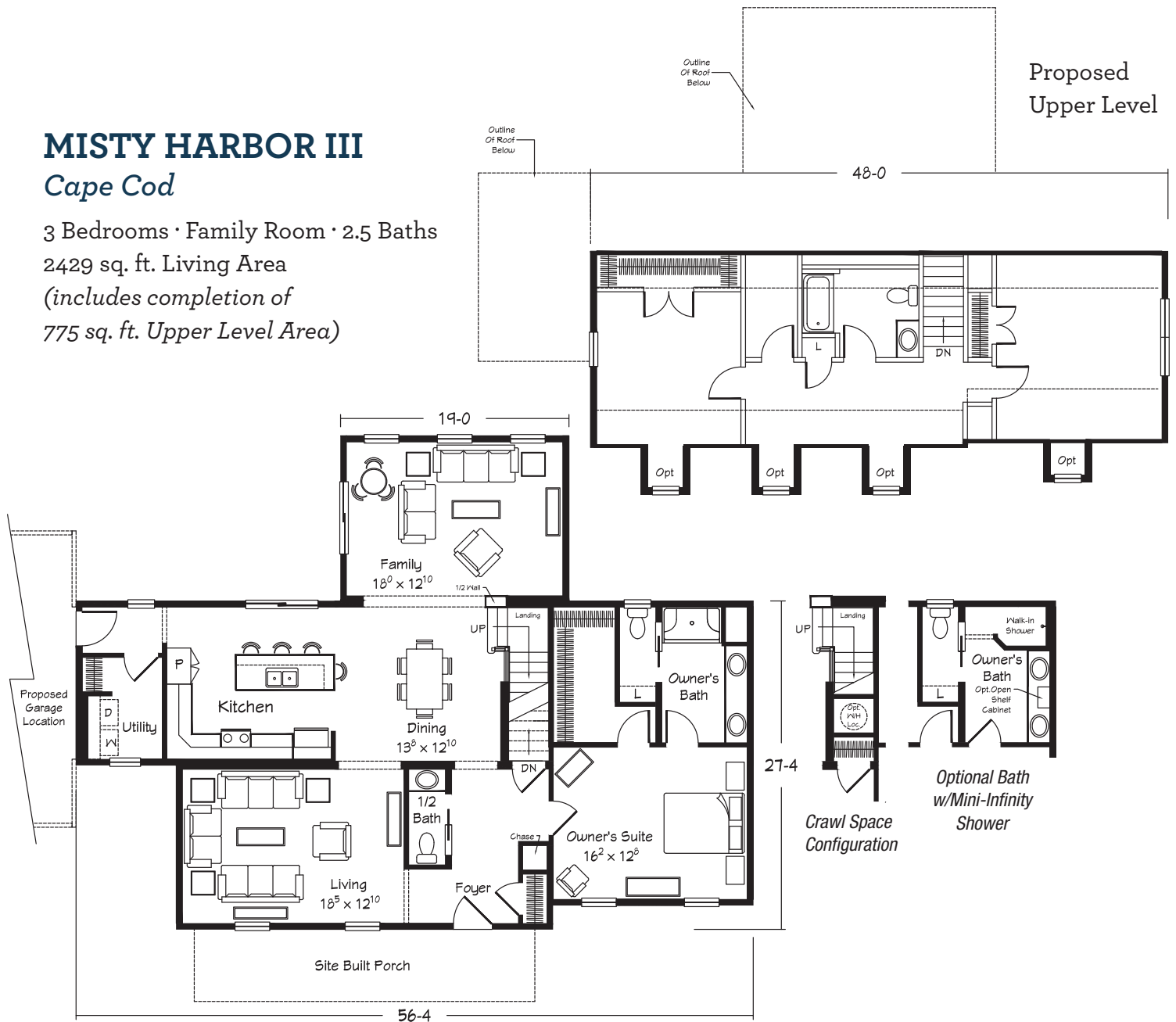
Artist's renderings depict homes as they may be built on a typical site. Renderings may show optional or site installed features. Some elevations include uniquely designed standard features. Refer to Ritz-Craft's "American Dream Benchmark Specifications & Plan-Specific Drawings" to review standard and optional features. Be sure to thoroughly discuss all aspects of your building project with your selected homebuilder.



Shown with site built garage and porch.

## MISTY HARBOR III Cape Cod

3 Bedrooms · Family Room · 2.5 Baths  
2429 sq. ft. Living Area  
(includes completion of  
775 sq. ft. Upper Level Area)



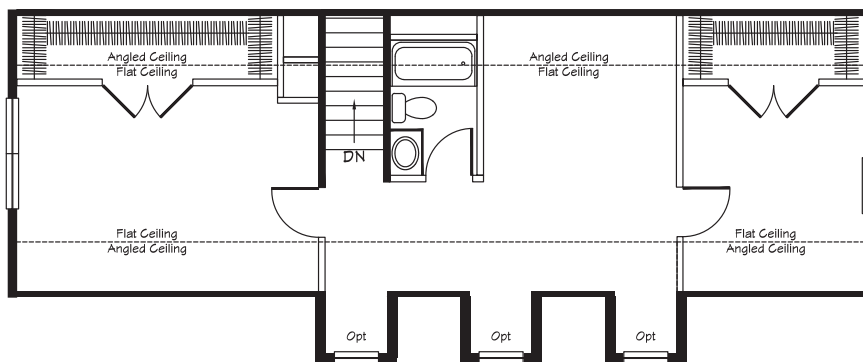
Total "sq. ft. Living Area" does not include garage or porch square footage.



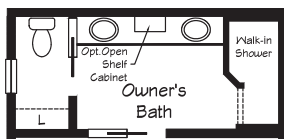
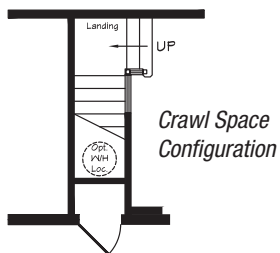
Shown with site built garage and porch.

## MERRIMACK Cape Cod

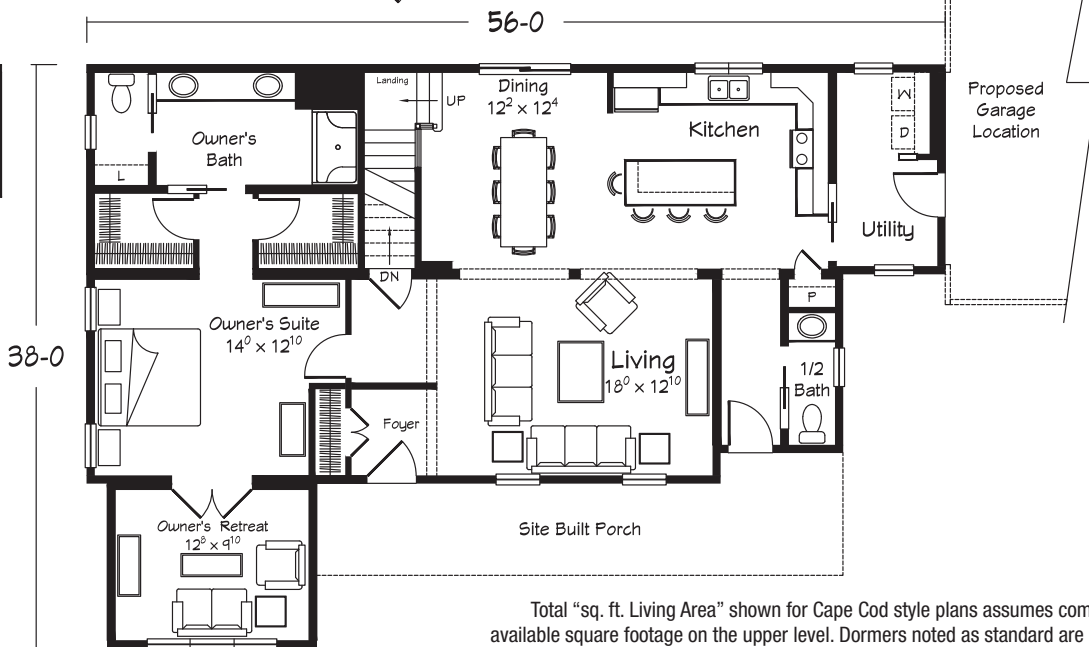
3 Bedrooms · 2.5 Baths  
2429 sq. ft. Living Area  
(includes completion of  
775 sq. ft. Upper Level Area)



Proposed Upper Level



Optional Bath  
w/Mini-Infinity Shower



Total "sq. ft. Living Area" shown for Cape Cod style plans assumes completion of total available square footage on the upper level. Dormers noted as standard are included in the upper level sq. ft.—optional dormer square footage is not. Finish materials and fixtures are not included. The proposed upper level must be site-finished by your selected builder.

Total "sq. ft. Living Area" does not include garage or porch square footage.

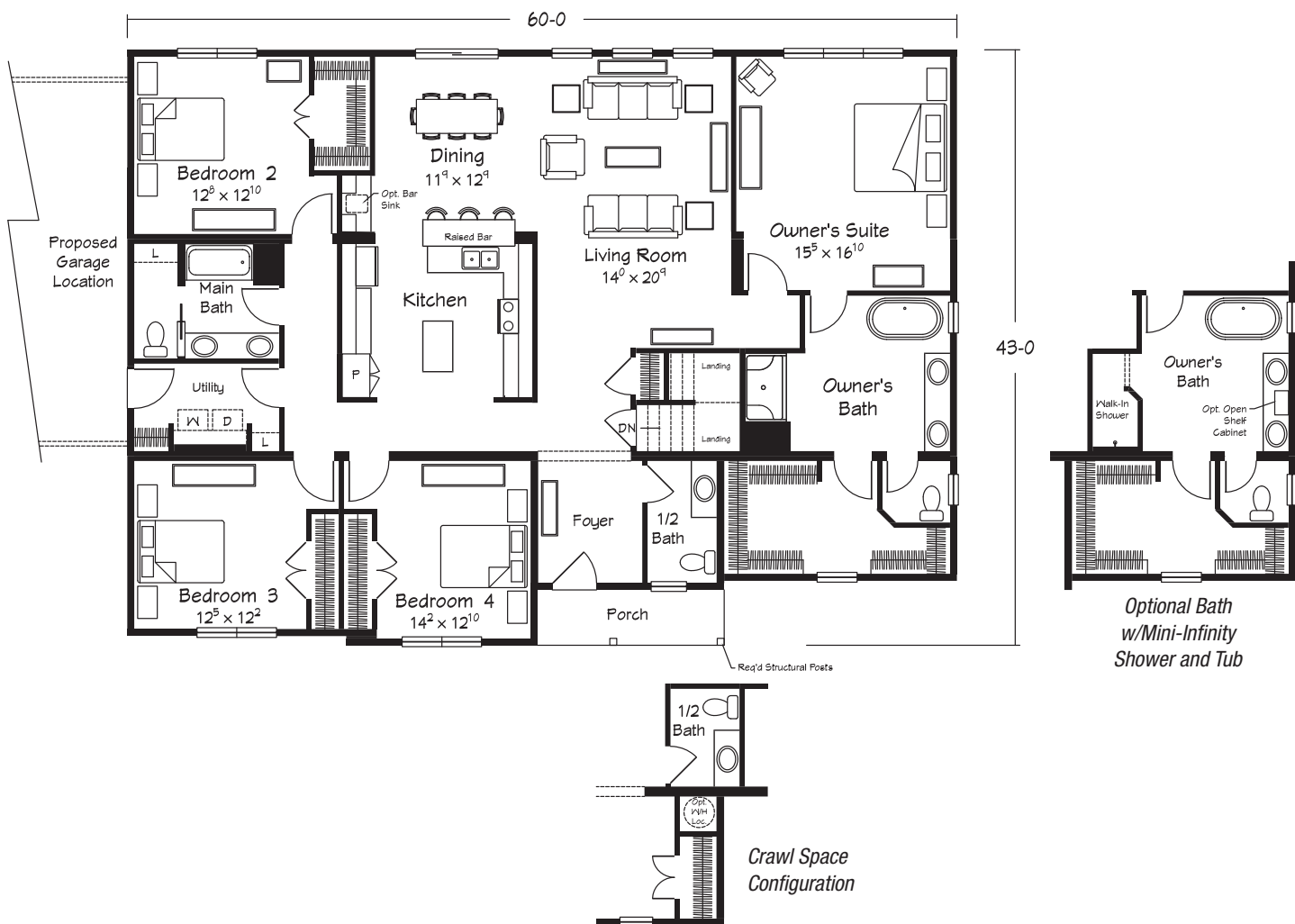




Shown with site built garage.

# SAMANTHA III Ranch

4 Bedrooms · 2.5 Baths  
2442 sq. ft. Living Area



Total "sq. ft. Living Area" does not include garage or porch square footage.

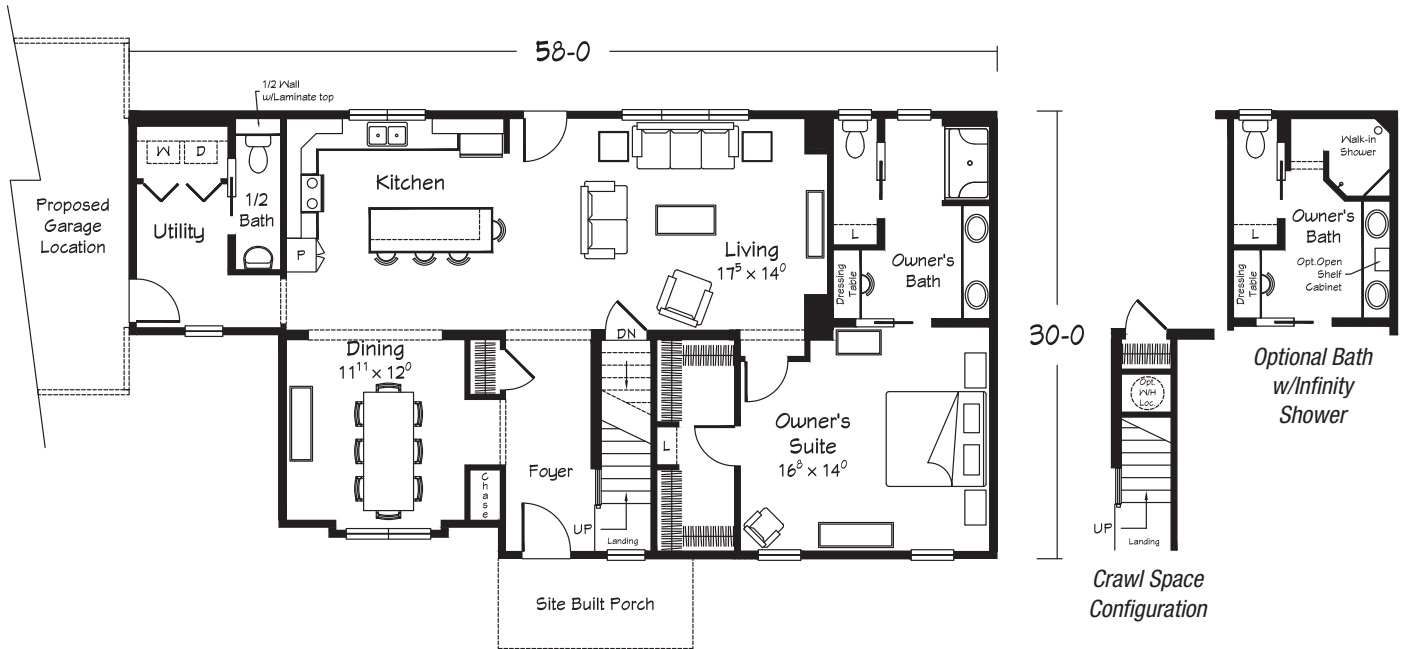
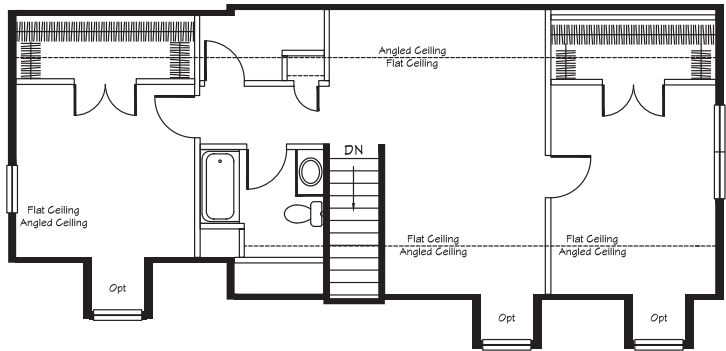
Artist's renderings depict homes as they may be built on a typical site. Renderings may show optional or site installed features. Some elevations include uniquely designed standard features. Refer to Ritz-Craft's "American Dream Benchmark Specifications & Plan-Specific Drawings" to review standard and optional features. Be sure to thoroughly discuss all aspects of your building project with your selected homebuilder.



Shown with site built garage and porch.

## OLD TOWNE Cape Cod

3 Bedrooms · 2.5 Baths  
2470 sq. ft. Living Area  
(includes completion of  
910 sq. ft. Upper Level Area)



Total "sq. ft. Living Area" does not include garage or porch square footage.

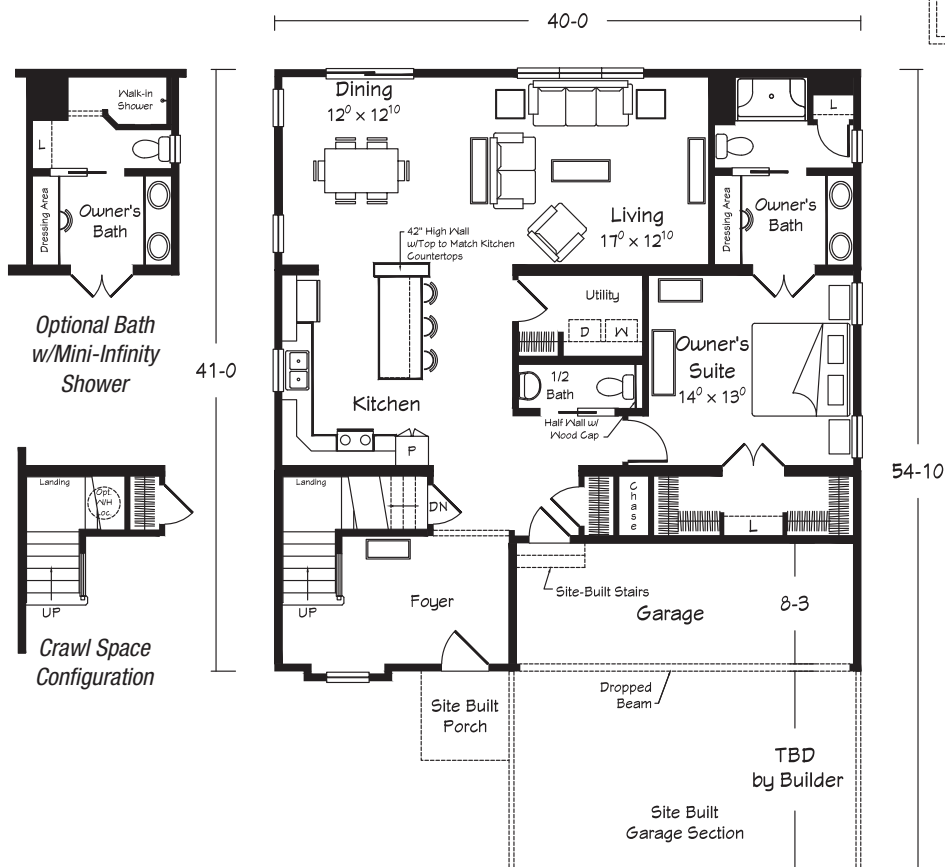
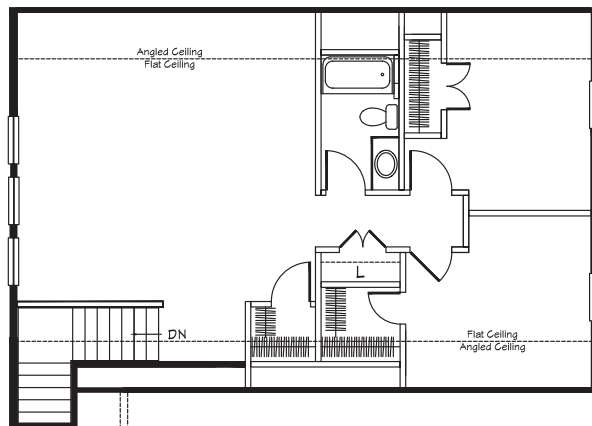


Shown with site built garage and porch.

## FREDONIA II Cape Cod

3 Bedrooms · 2.5 Baths  
2500 sq. ft. Living Area  
(includes completion of  
1058 sq. ft. Upper Level Area)

*\*Optional Dormer  
is Decorative and  
does not provide  
additional finished  
floor space*



Proposed Upper Level

Total "sq. ft. Living Area" shown for Cape Cod style plans assumes completion of total available square footage on the upper level. Dormers noted as standard are included in the upper level sq. ft.—optional dormer square footage is not. Finish materials and fixtures are not included. The proposed upper level must be site-finished by your selected builder.

Total "sq. ft. Living Area" does not include garage or porch square footage.



Shown with site built garage and porch.

## MAPLE TREE II

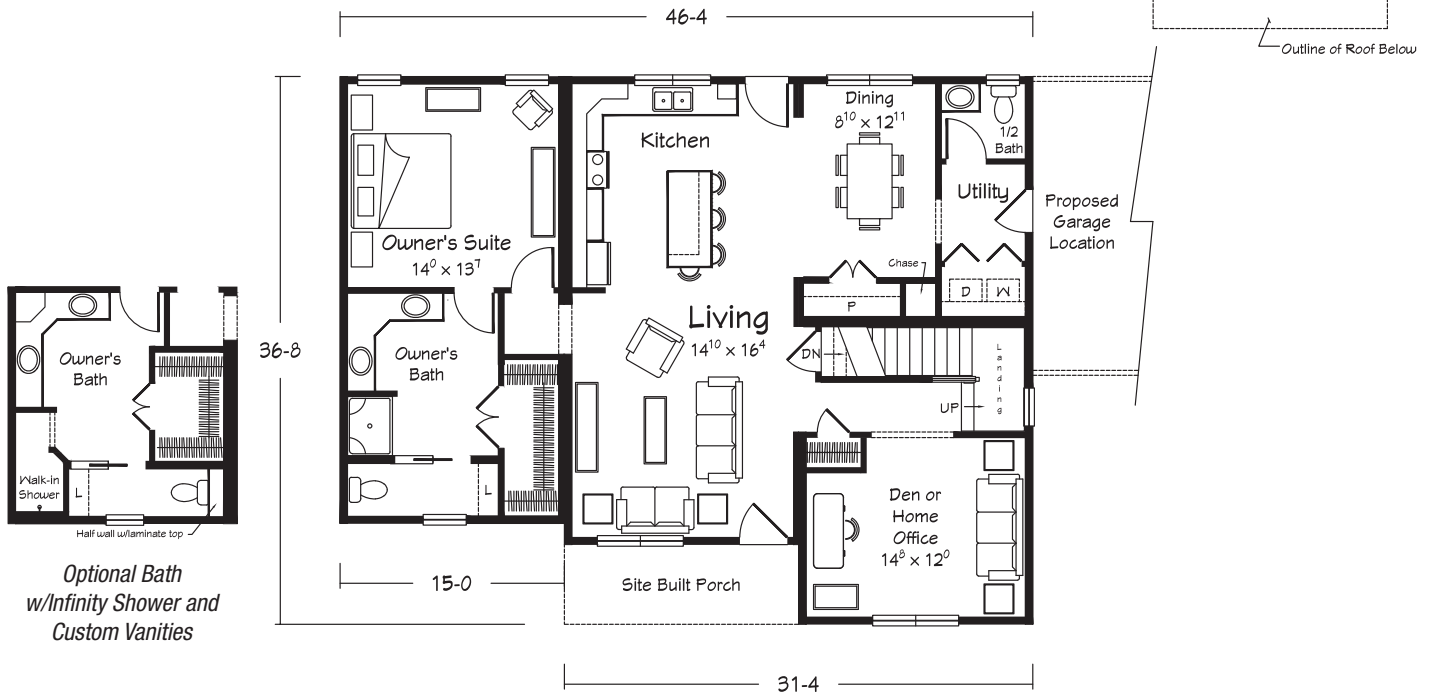
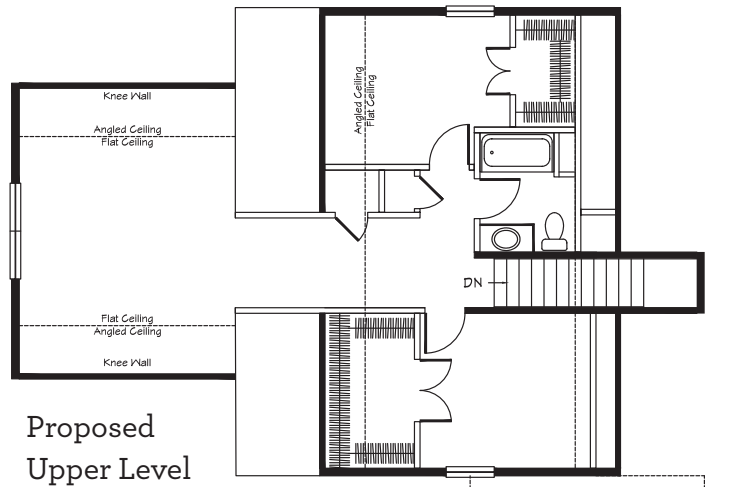
### Cape Cod

3 Bedrooms

Den/Home Office · 2.5 Baths

2553 sq. ft. Living Area

(includes completion of  
1038 sq. ft. Upper Level Area)



Optional Bath  
w/Infinity Shower and  
Custom Vanities

Total "sq. ft. Living Area" does not include garage or porch square footage.



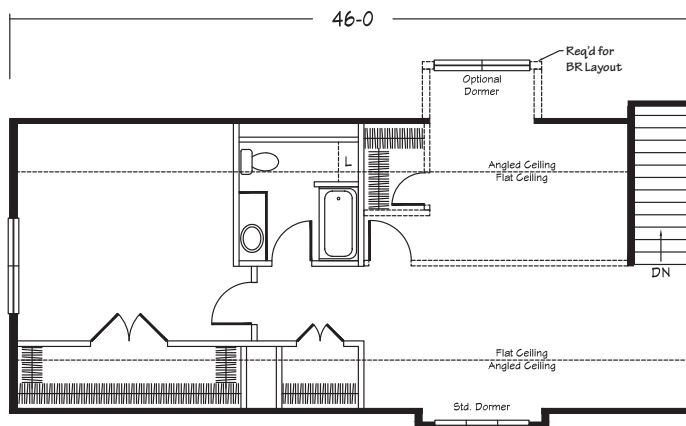


Shown with site built garage and porch.

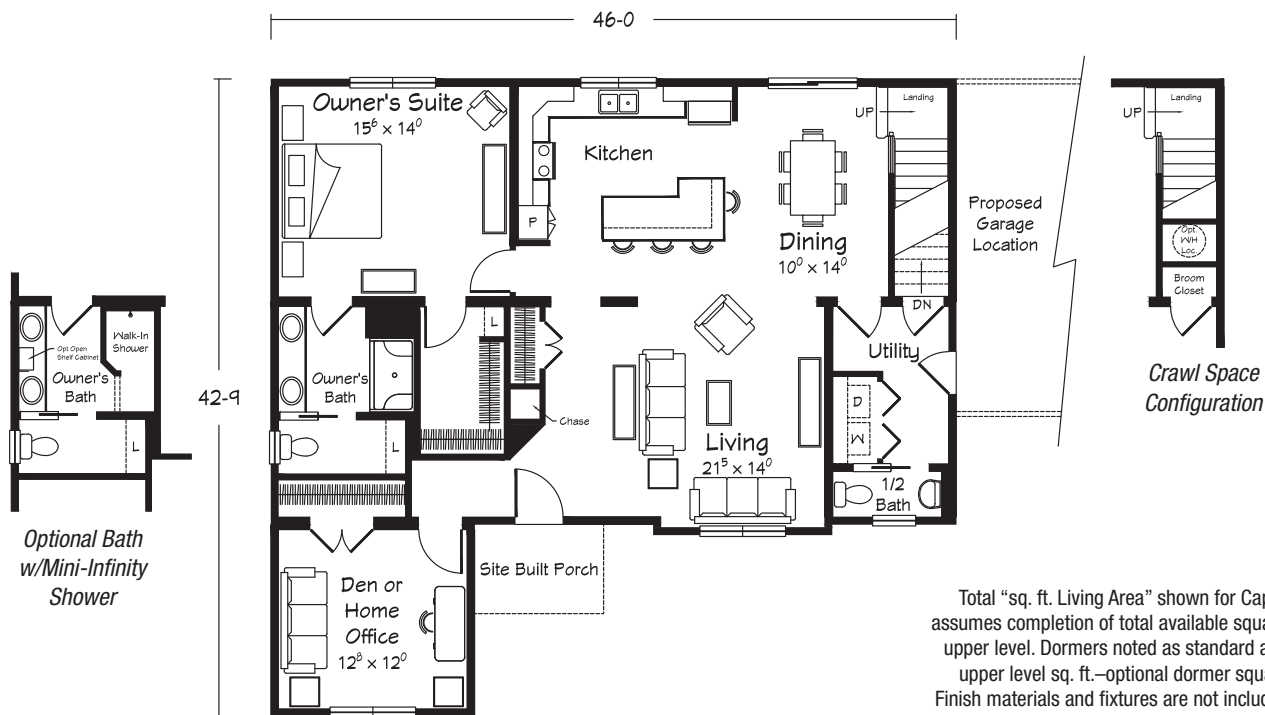
## DEARBORN II

### Cape Cod

3 Bedrooms · Den/Home Office  
 2.5 Baths  
 2516 sq. ft. Living Area  
 (includes completion of  
 956 sq. ft. Upper Level Area)



Proposed Upper Level



Total "sq. ft. Living Area" shown for Cape Cod style plans assumes completion of total available square footage on the upper level. Dormers noted as standard are included in the upper level sq. ft.—optional dormer square footage is not. Finish materials and fixtures are not included. The proposed upper level must be site-finished by your selected builder.

Total "sq. ft. Living Area" does not include garage or porch square footage.



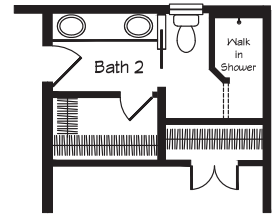
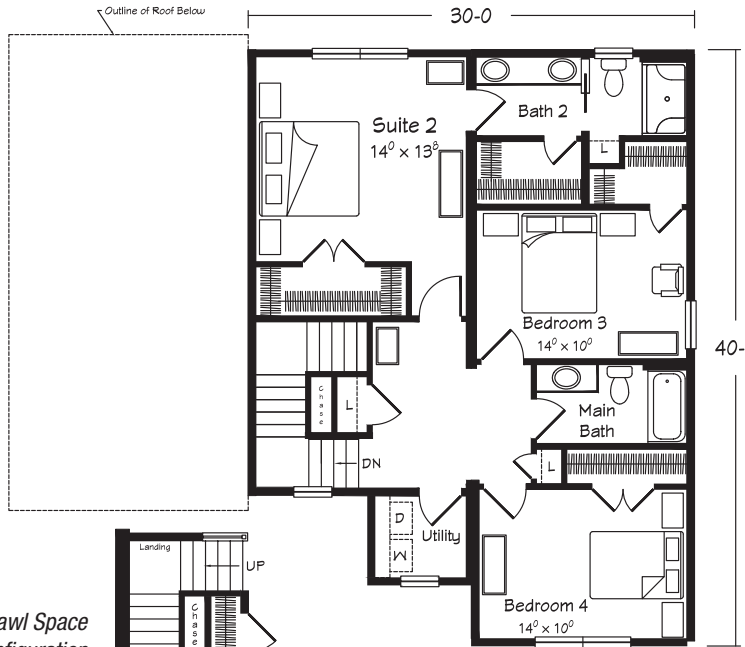
Shown with site built garage or porch.

# SAYBROOK

## Two Story

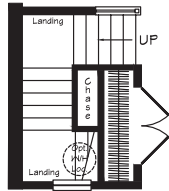
- 4 Bedrooms
- Den/Home Office
- 3.5 Baths
- 2625 sq. ft. Living Area

Saybrook  
Second Floor

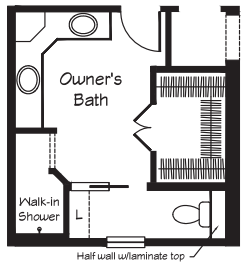
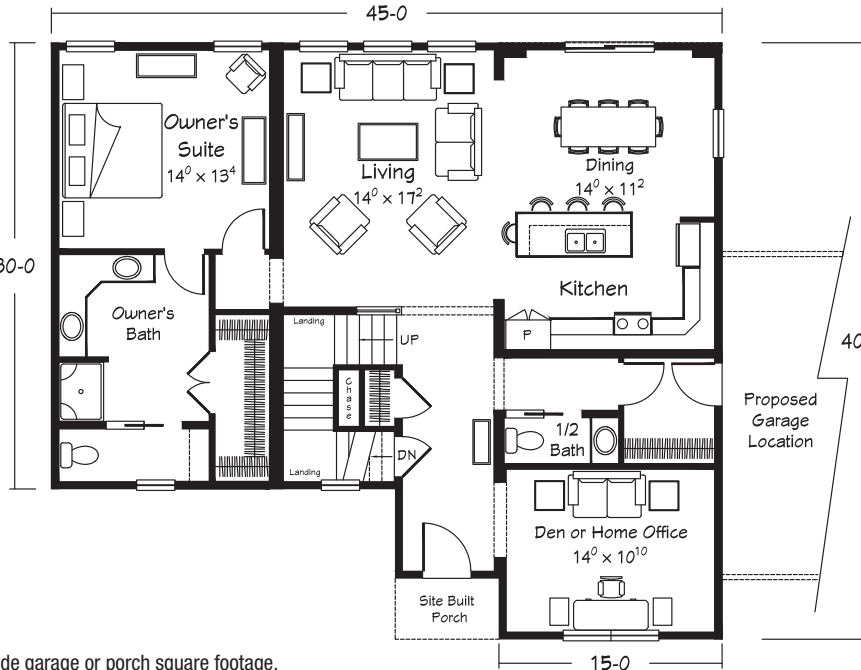


Optional Bath  
w/Mini-Infinity  
Shower

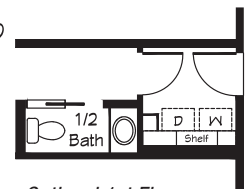
Crawl Space  
Configuration



Saybrook  
First Floor



Optional Bath  
w/Mini-Infinity Shower



Optional 1st Floor  
Laundry w/Cabinets & Shelf

Total "sq. ft. Living Area" does not include garage or porch square footage.

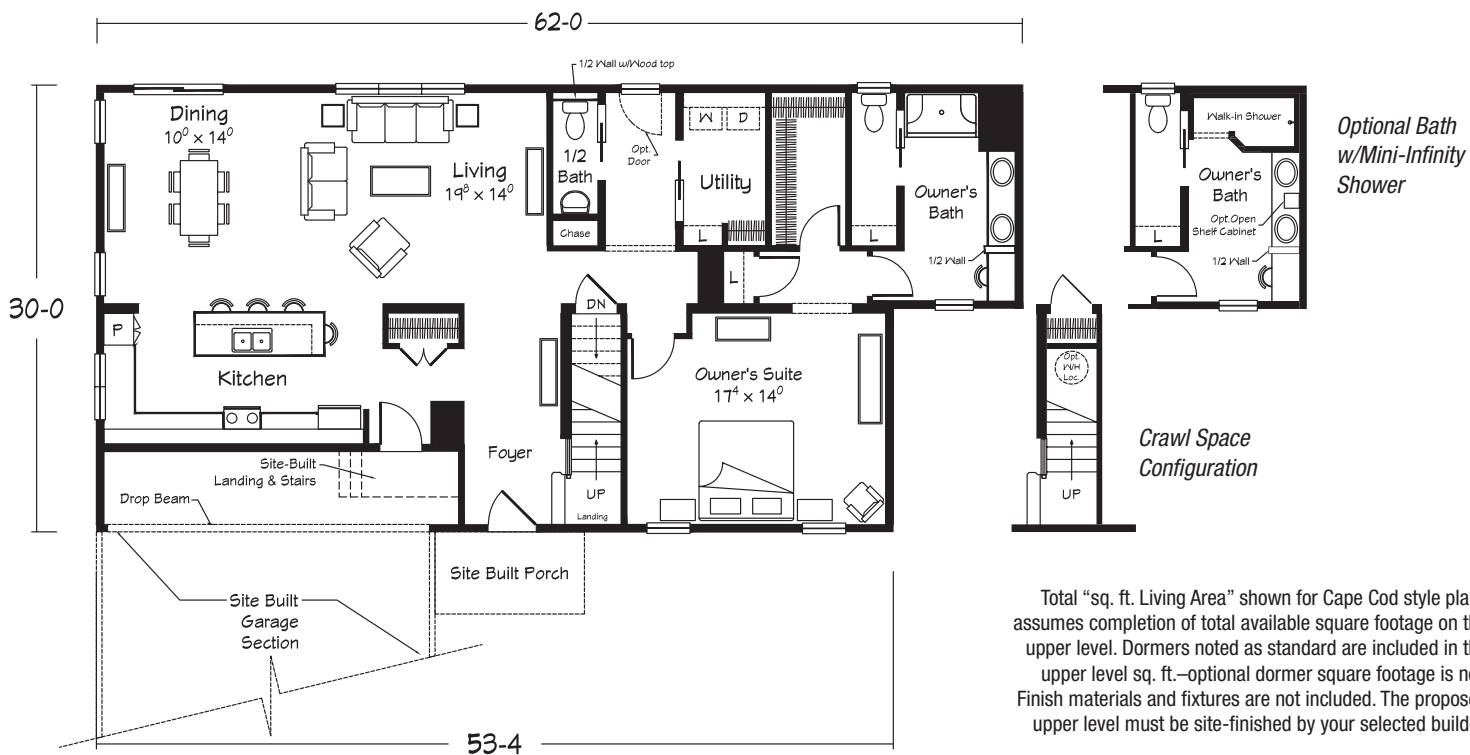
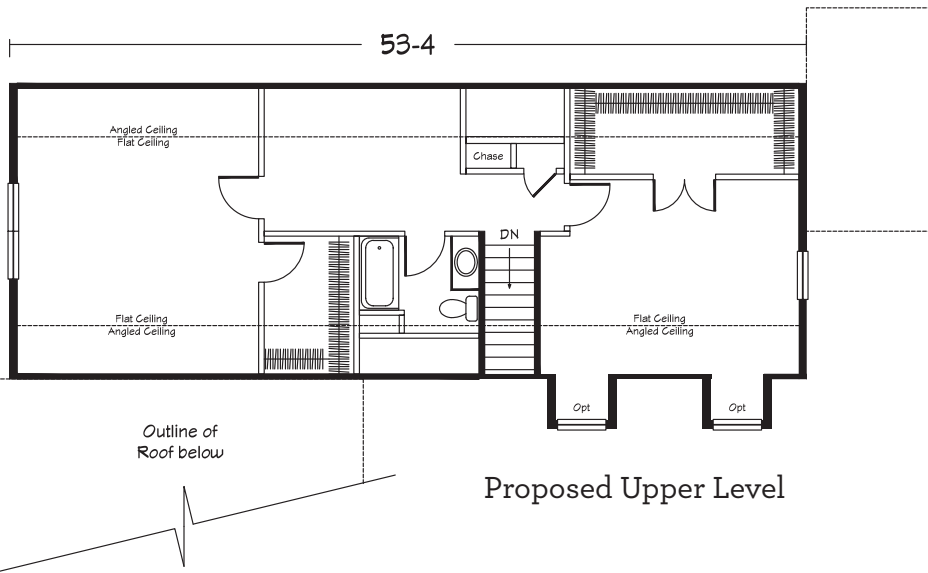


Shown with site built garage and porch.

## MATTYDALE II

### Cape Cod

3 Bedrooms · 2.5 Baths  
 2681 sq. ft. Living Area  
 (includes completion of  
 1085 sq. ft. Upper Level Area)

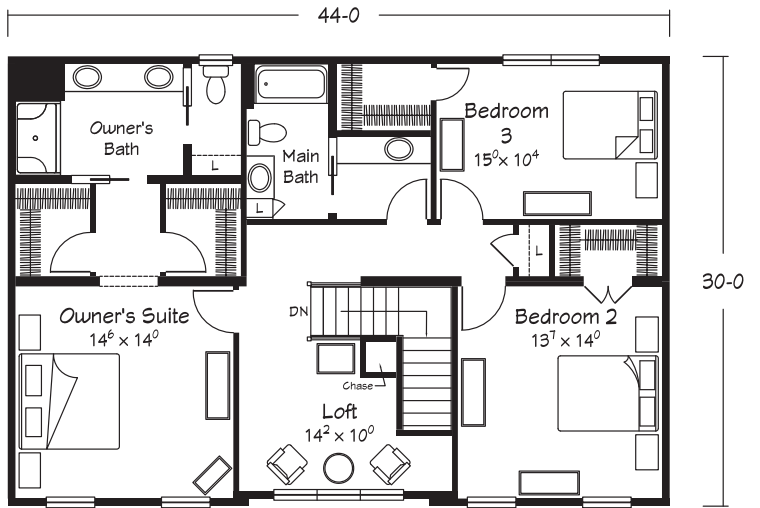
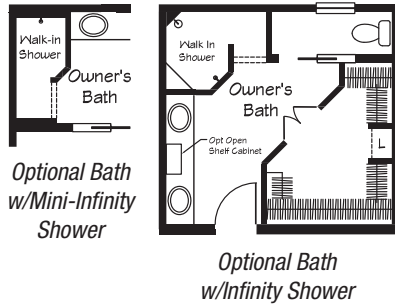


Total "sq. ft. Living Area" shown for Cape Cod style plans assumes completion of total available square footage on the upper level. Dormers noted as standard are included in the upper level sq. ft.—optional dormer square footage is not. Finish materials and fixtures are not included. The proposed upper level must be site-finished by your selected builder.

Total "sq. ft. Living Area" does not include garage or porch square footage.



Shown with site built garage and porch.

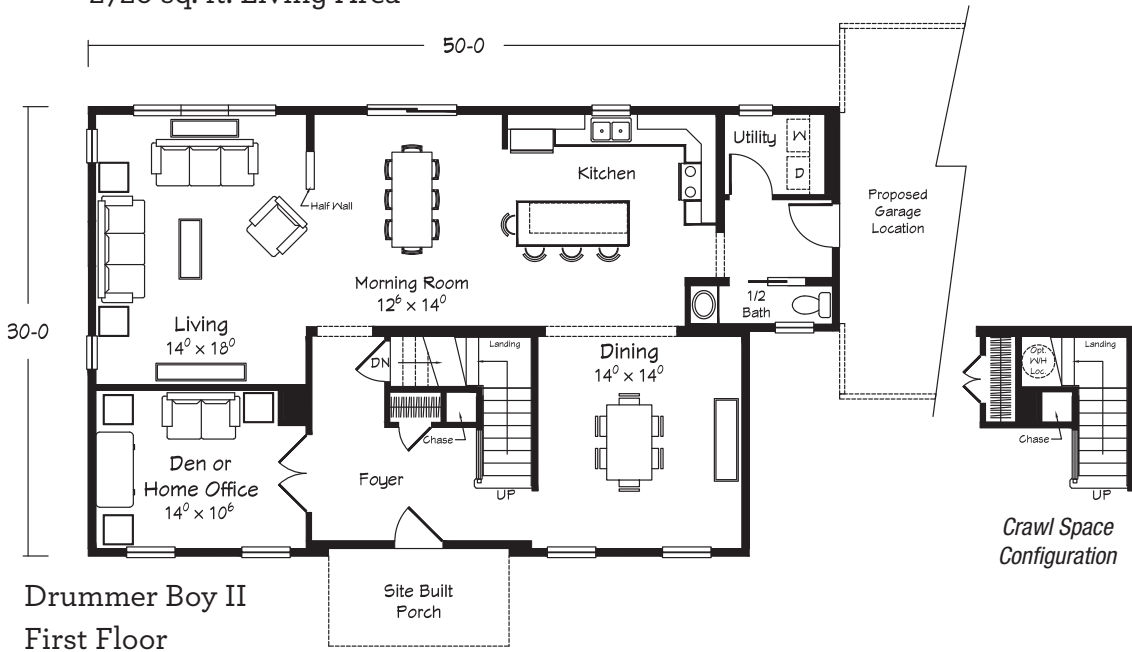


## DRUMMER BOY II

### Two Story

3 Bedrooms · Den/Home Office  
Loft · 2.5 Baths  
2720 sq. ft. Living Area

Drummer Boy II  
Second Floor



Drummer Boy II  
First Floor

Total "sq. ft. Living Area" does not include garage or porch square footage.



Shown with site built garage, porch with optional high pitch roof and dormers.

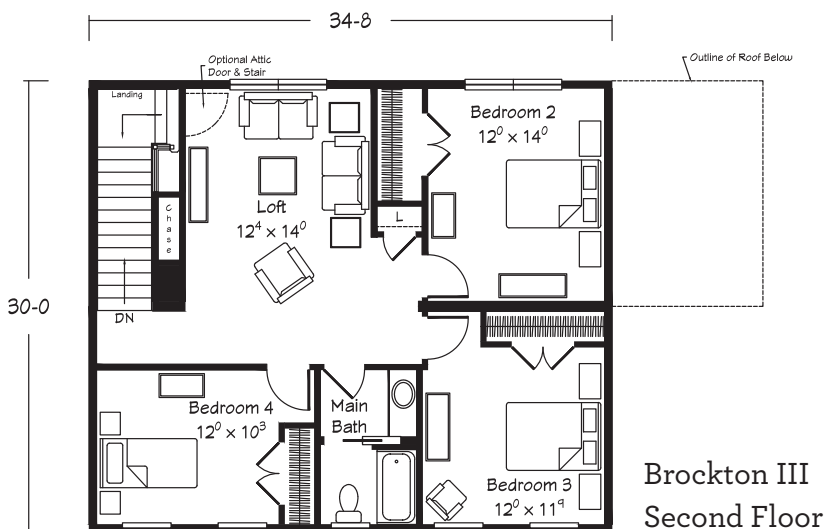
## BROCKTON IV

### Two Story

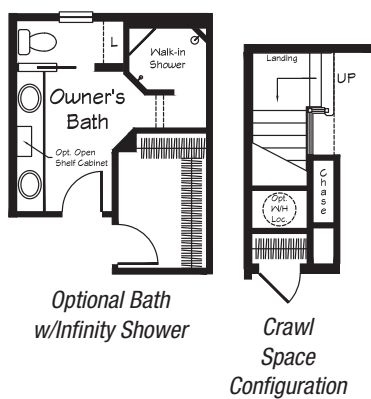
4 Bedrooms · Den/Home Office

Loft · 2.5 Baths

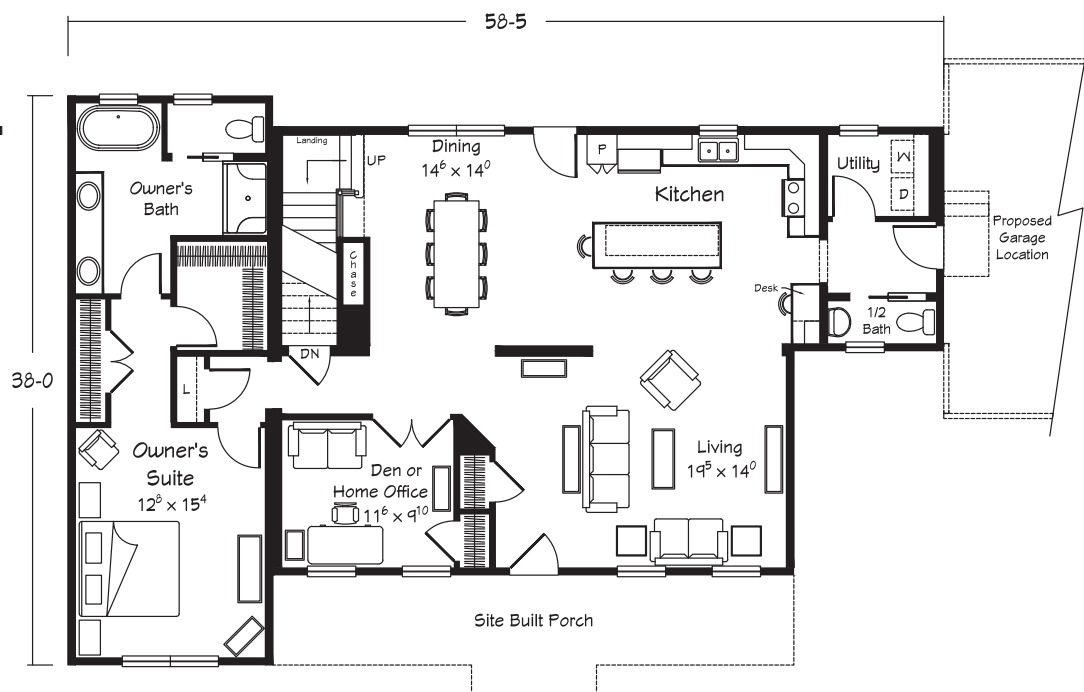
2746 sq. ft. Living Area



Brockton III  
Second Floor



Brockton III  
First Floor



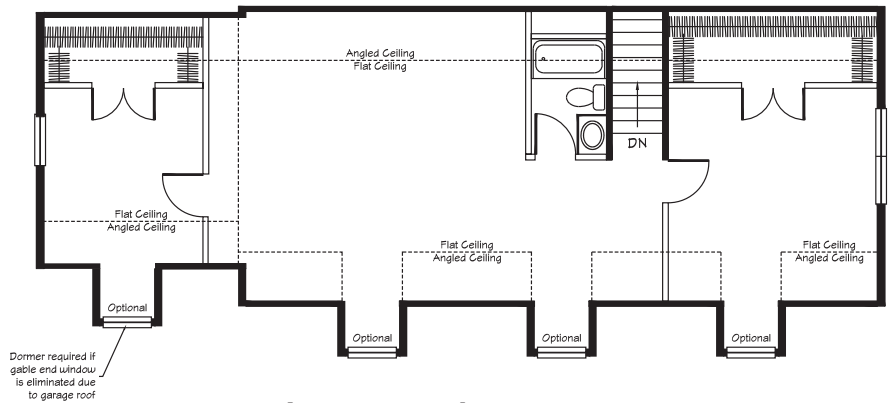
Total "sq. ft. Living Area" does not include garage or porch square footage.



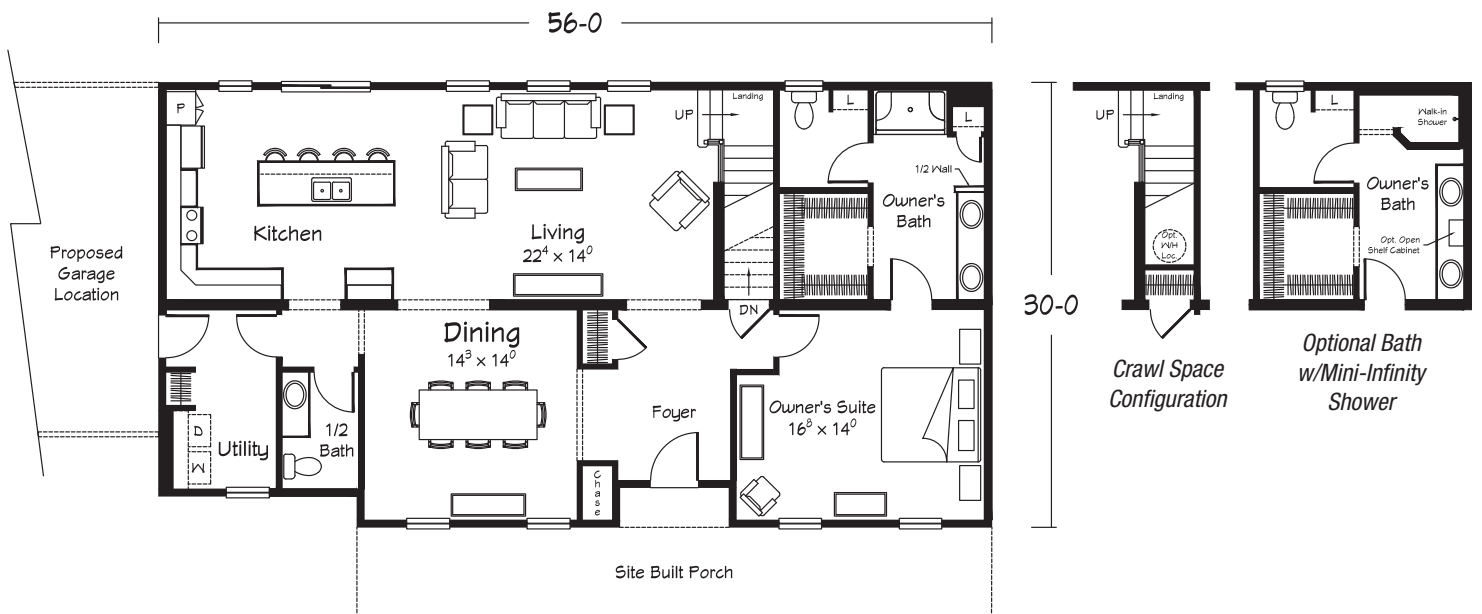
Shown with site built garage and porch.

## AUGUSTA Cape Cod

3 Bedrooms · 2.5 Baths  
2766 sq. ft. Living Area  
(includes completion of  
1138 sq. ft. Upper Level Area)



Proposed Upper Level



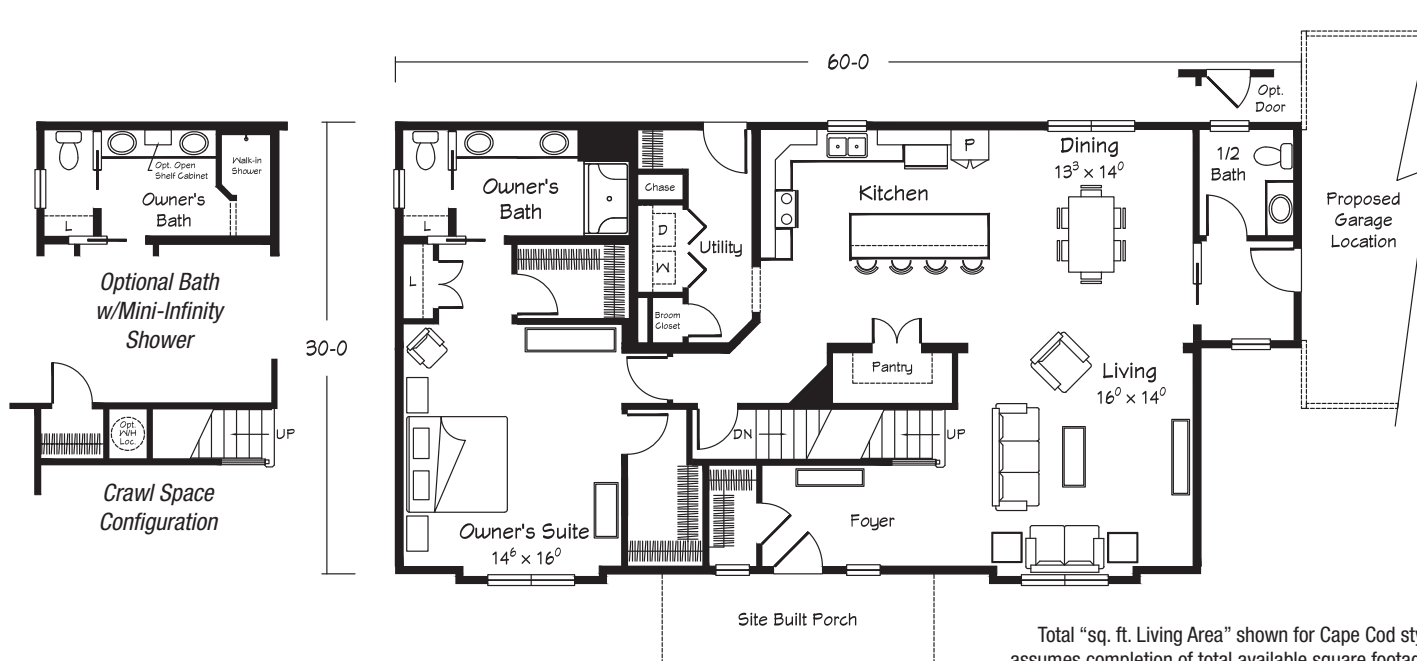
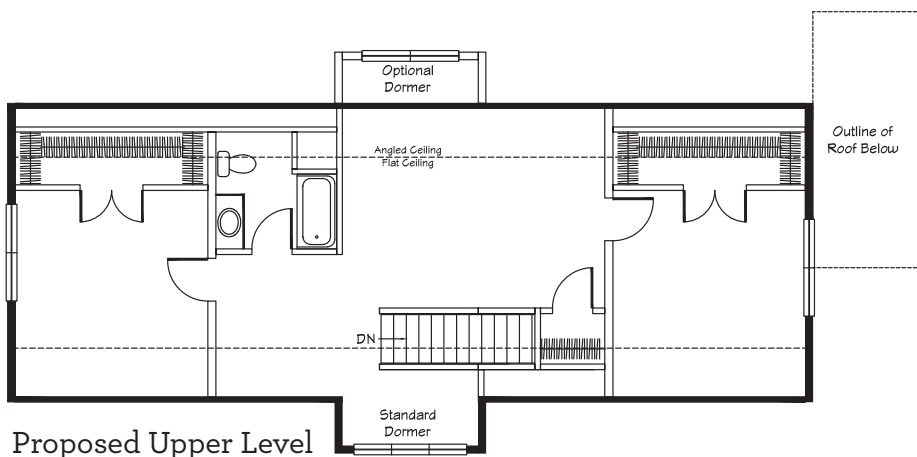
Total "sq. ft. Living Area" does not include garage or porch square footage.



Shown with site built garage and porch.

## SHELTON CREEK Cape Cod

3 Bedrooms · 2.5 Baths  
2799 sq. ft. Living Area  
(includes completion of  
1090 sq. ft. Upper Level Area)



Total "sq. ft. Living Area" shown for Cape Cod style plans assumes completion of total available square footage on the upper level. Dormers noted as standard are included in the upper level sq. ft.—optional dormer square footage is not. Finish materials and fixtures are not included. The proposed upper level must be site-finished by your selected builder.

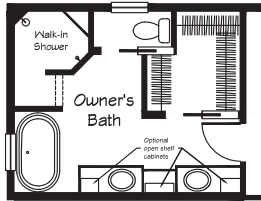
Total "sq. ft. Living Area" does not include garage or porch square footage.



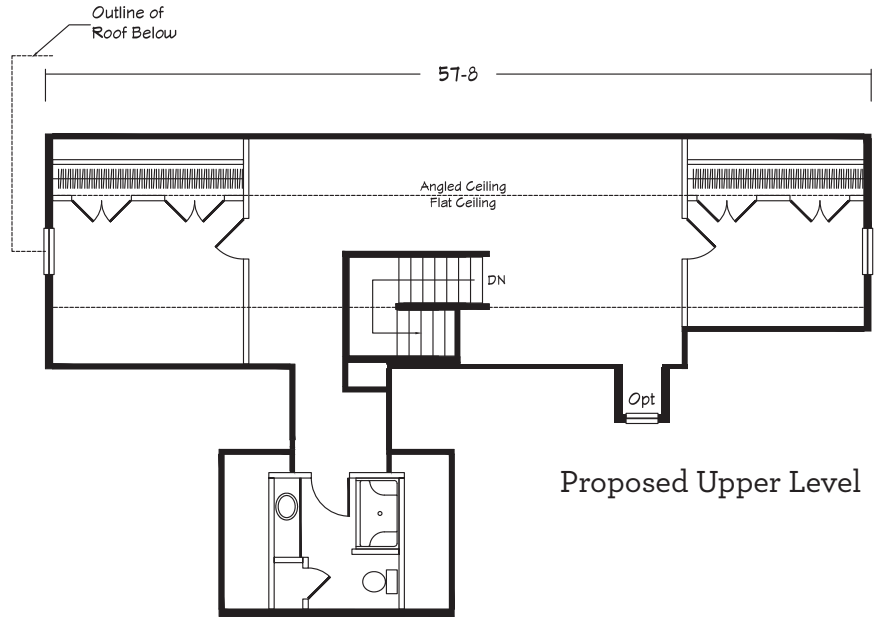
Shown with site built garage.

## HORIZON Cape Cod

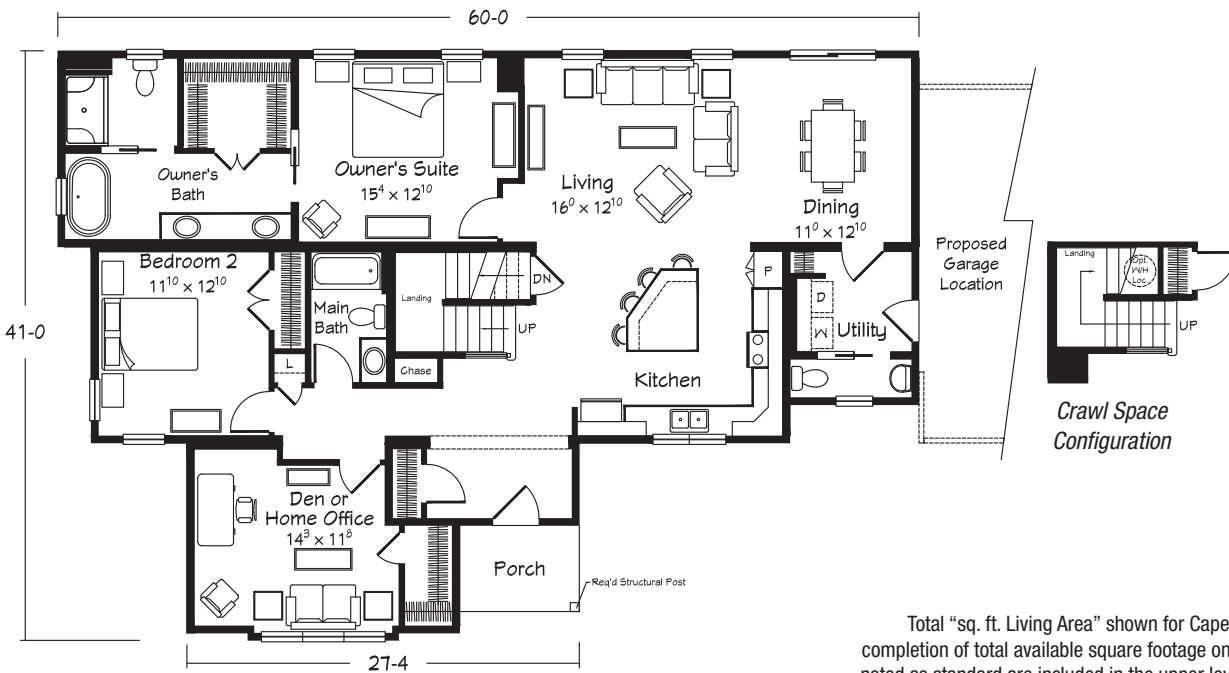
4 Bedrooms · Den/Home Office  
3.5 Baths  
3025 sq. ft. Living Area  
(includes completion of  
1155 sq. ft. Upper Level Area)



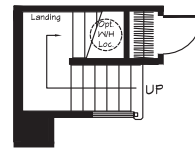
Optional Bath  
w/Infinity Shower,  
Custom Cabinetry &  
Free-standing Tub



Proposed Upper Level



Proposed Garage Location



Crawl Space Configuration

Total "sq. ft. Living Area" does not include garage or porch square footage.

Total "sq. ft. Living Area" shown for Cape Cod style plans assumes completion of total available square footage on the upper level. Dormers noted as standard are included in the upper level sq. ft.—optional dormer square footage is not. Finish materials and fixtures are not included. The proposed upper level must be site-finished by your selected builder.





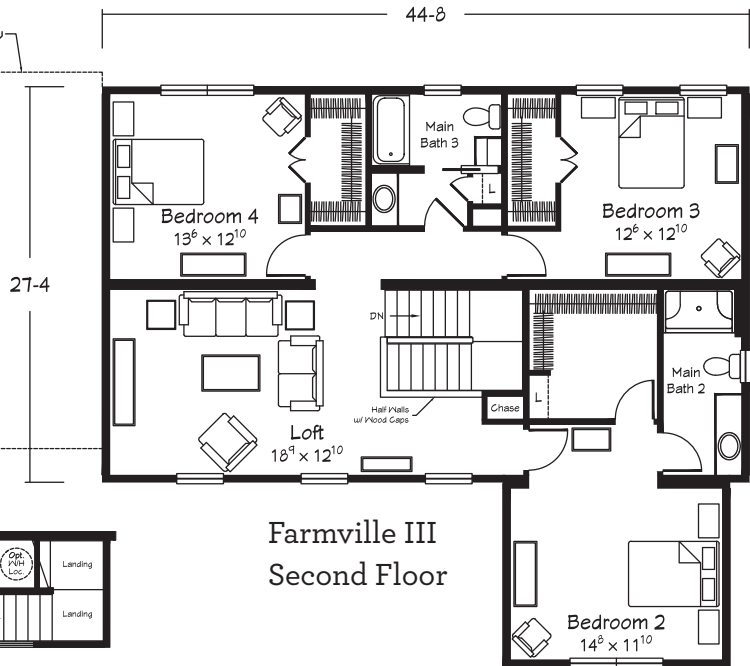
Shown with site built garage and porch.

## FARMVILLE III

### Two Story

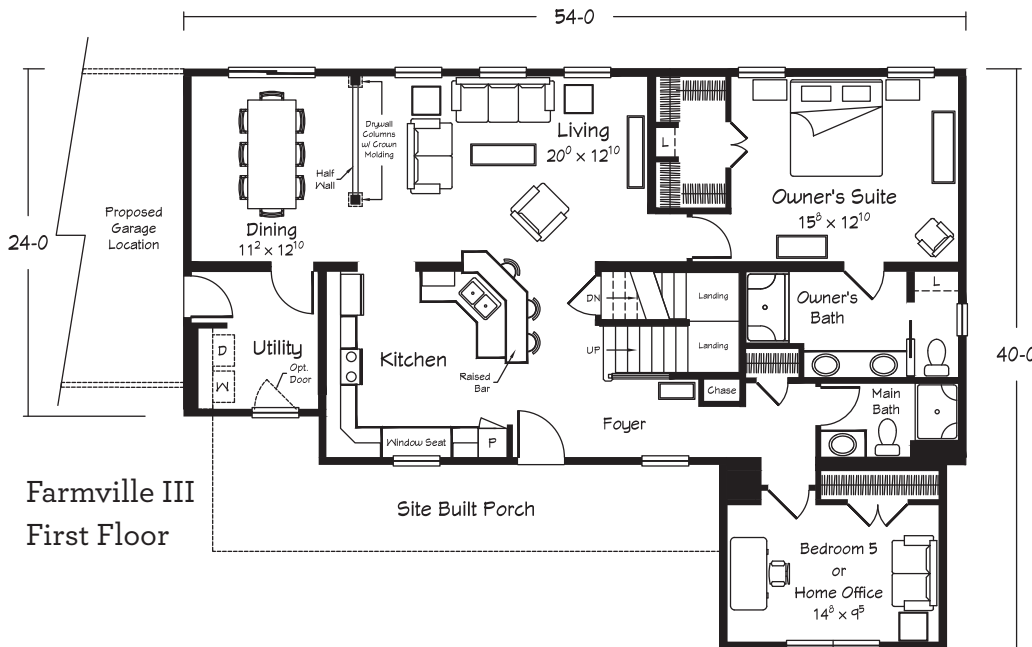
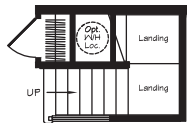
5 Bedrooms · Loft · 4 Baths  
3066 sq. ft. Living Area

Outline of Roof Below

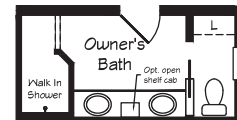


Farmville III  
Second Floor

Crawl Space  
Configuration



Farmville III  
First Floor



Optional Bath  
w/Mini-Infinity  
Shower

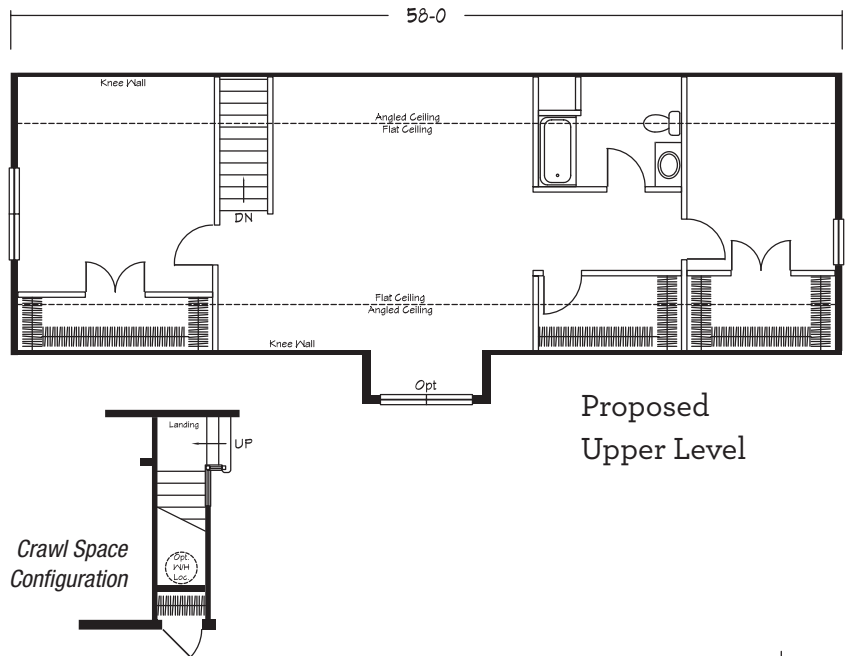
Total "sq. ft. Living Area" does not include garage or porch square footage.



Shown with site built garage.

## TRIPLE CROWN II Cape Cod

4 Bedrooms · Den  
Home Office · 3 Baths  
3152 sq. ft. Living Area  
(includes completion of  
1143 sq. ft. Upper Level Area)



Optional Bath  
w/Mini-Infinity  
Shower

Optional Bath  
w/Mini Infinity  
Shower and Tub  
(Moves Chase to  
Utility Closet)

Total "sq. ft. Living Area" does not include garage or porch square footage.

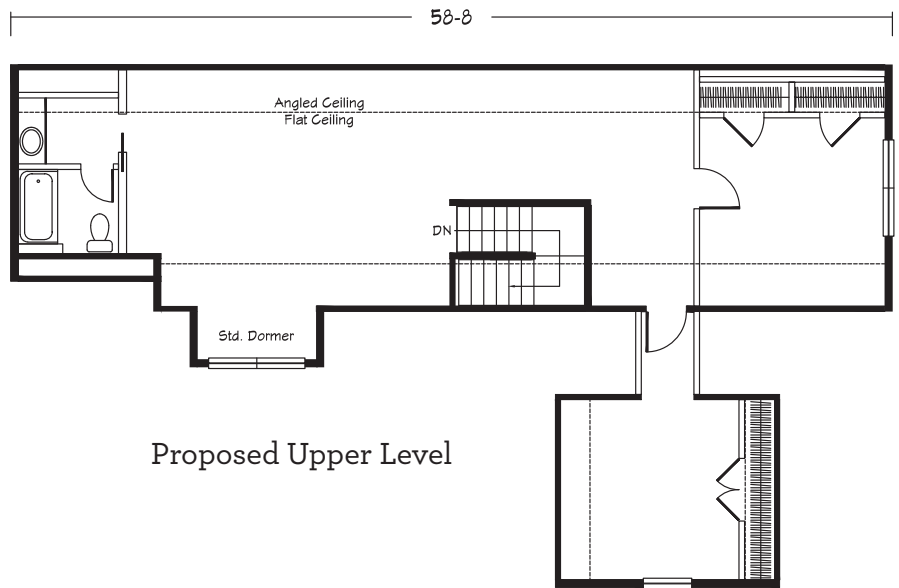


Shown with site built garage and porch.

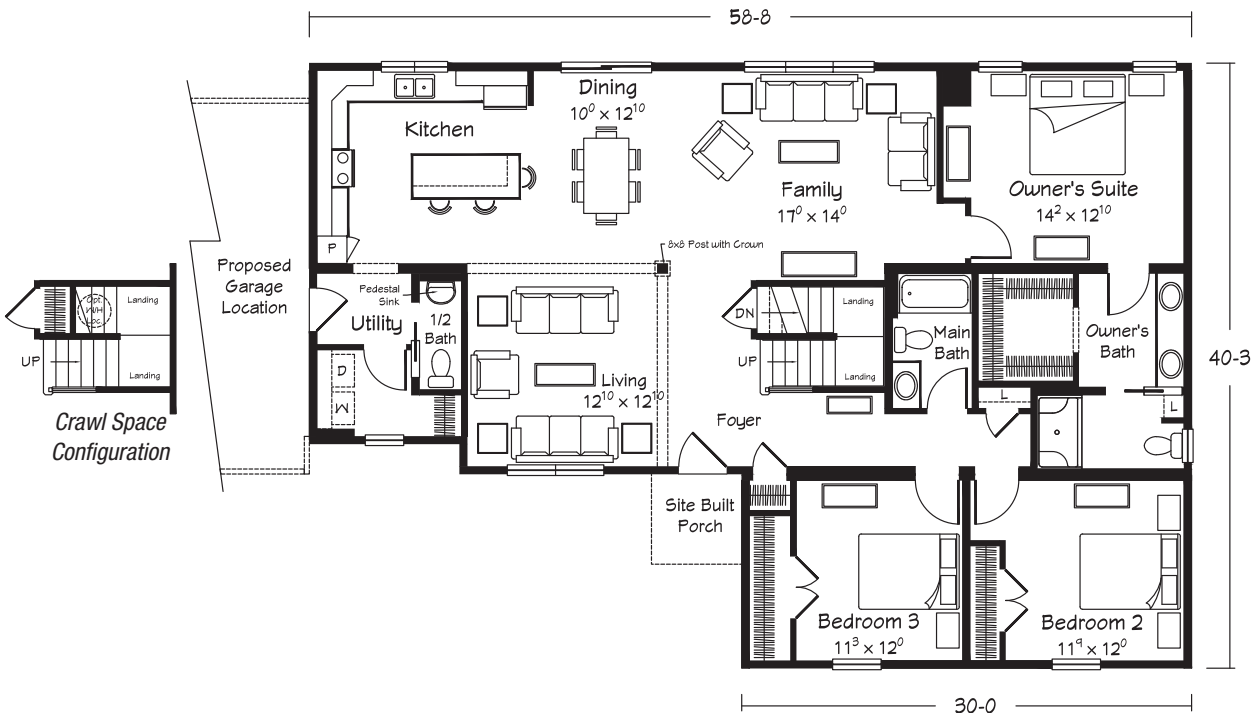
# NARRAGANSETT

## Cape Cod

5 Bedrooms · 3.5 Baths  
 3159 sq. ft. Living Area  
 (includes completion of  
 1187 sq. ft. Upper Level Area)



Proposed Upper Level



Total "sq. ft. Living Area" shown for Cape Cod style plans assumes completion of total available square footage on the upper level. Dormers noted as standard are included in the upper level sq. ft.—optional dormer square footage is not. Finish materials and fixtures are not included. The proposed upper level must be site-finished by your selected builder.

Total "sq. ft. Living Area" does not include garage or porch square footage.



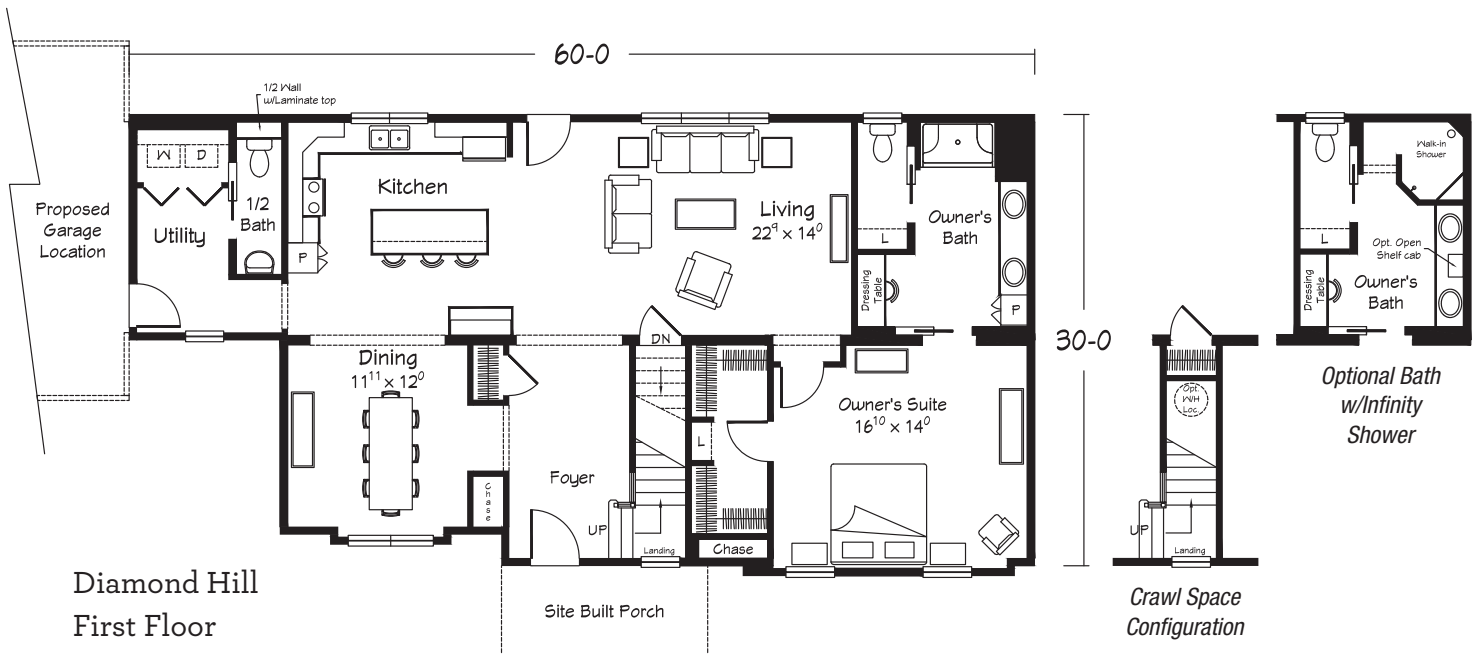
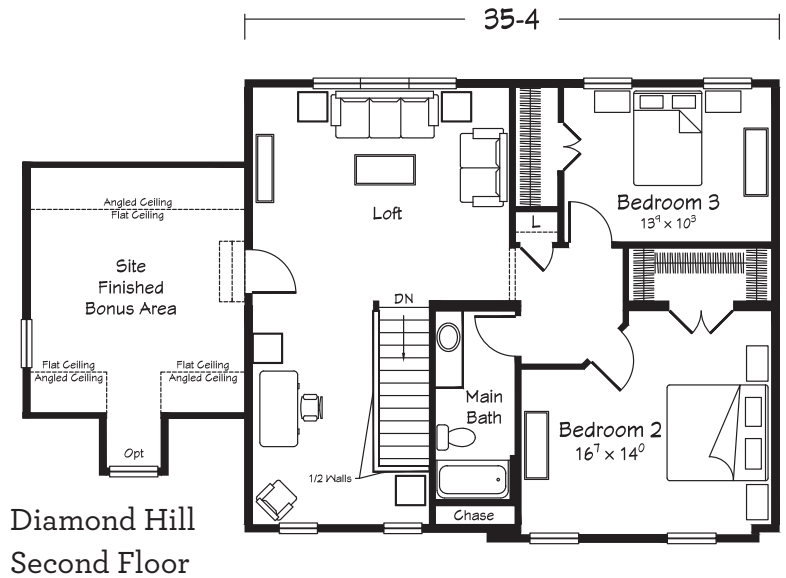
Shown with site built garage and porch.



## DIAMOND HILL

### Two Story

3-4 Bedrooms • Loft • 2.5 Baths  
 3190 sq. ft. Living Area  
 (includes completion of  
 248 sq. ft. Upper Level  
 Bonus Area)



Total "sq. ft. Living Area" does not include garage or porch square footage.



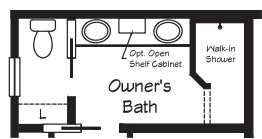
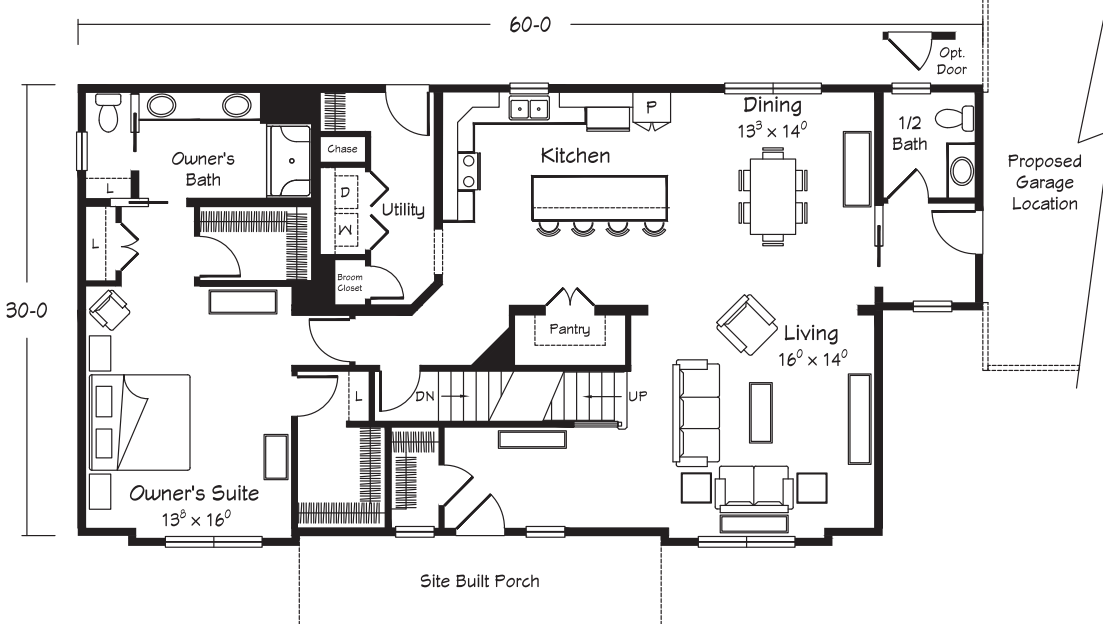
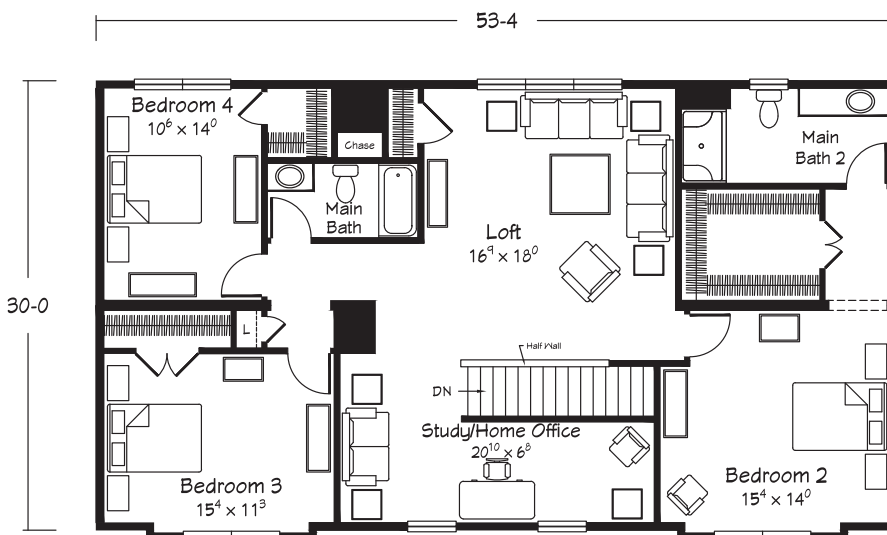
Shown with site built garage and porch.

## SHELTON CREEK

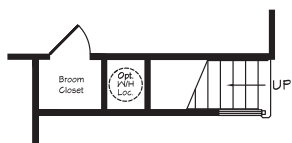
### Two Story

4 Bedrooms · Loft  
 Study/Home Office · 3.5 Baths  
 3318 sq. ft. Living Area

Shelton Creek  
 Second Floor



Optional Bath  
 w/Mini-Infinity Shower



Crawl Space Configuration

Shelton Creek  
 First Floor

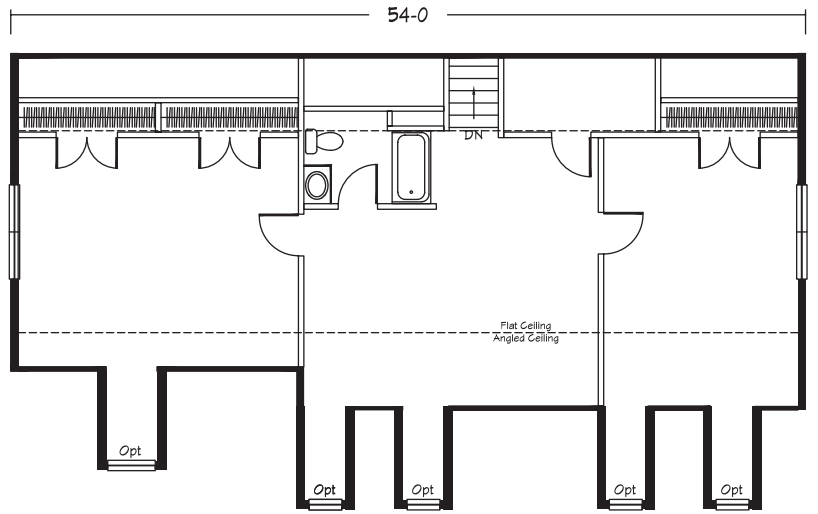
Total "sq. ft. Living Area" does not include garage or porch square footage.



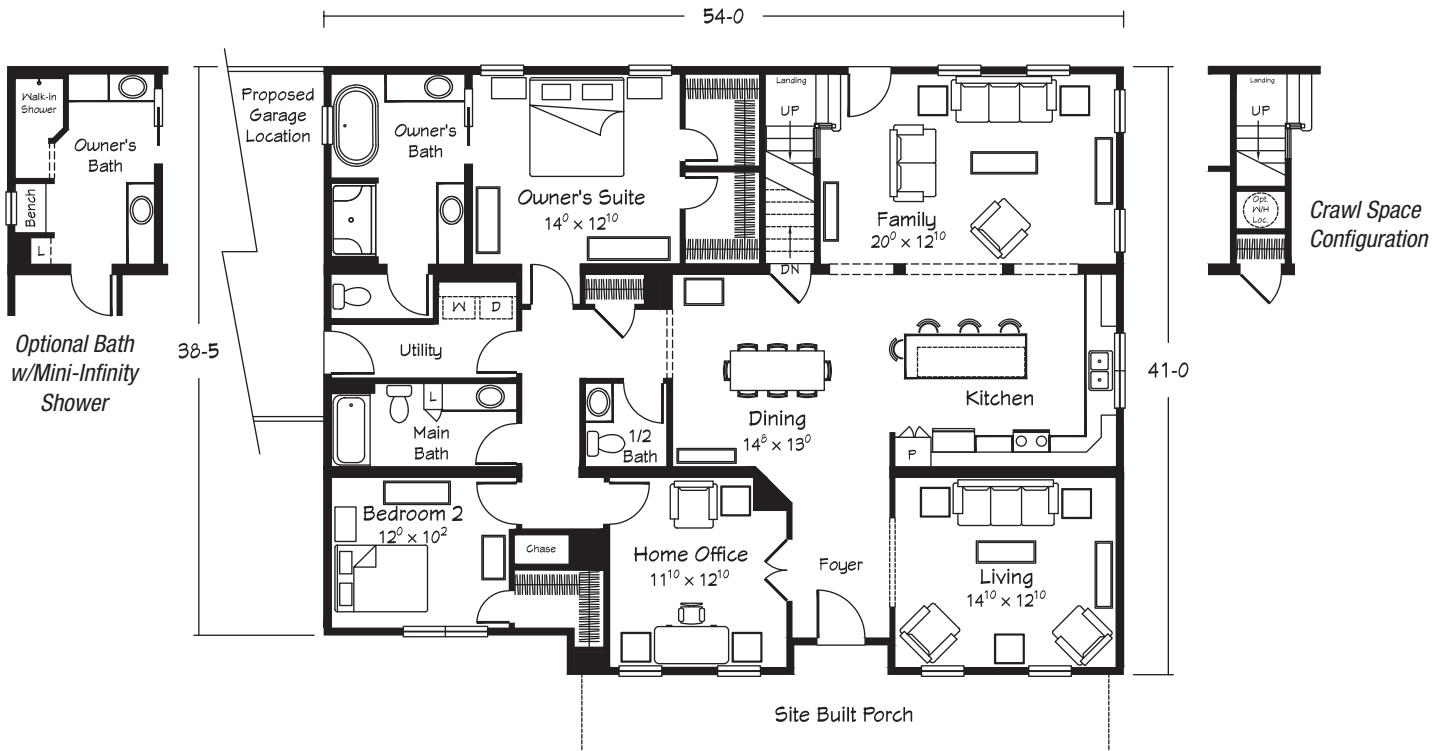
Shown with site built garage and porch.

## BREWERTON Cape Cod

4 Bedrooms · Home Office  
Family Room · 3.5 Baths  
3424 sq. ft. Living Area  
(includes completion of  
1257 sq. ft. Upper Level Area)



Proposed Upper Level



Optional Bath  
w/Mini-Infinity  
Shower

Crawl Space  
Configuration

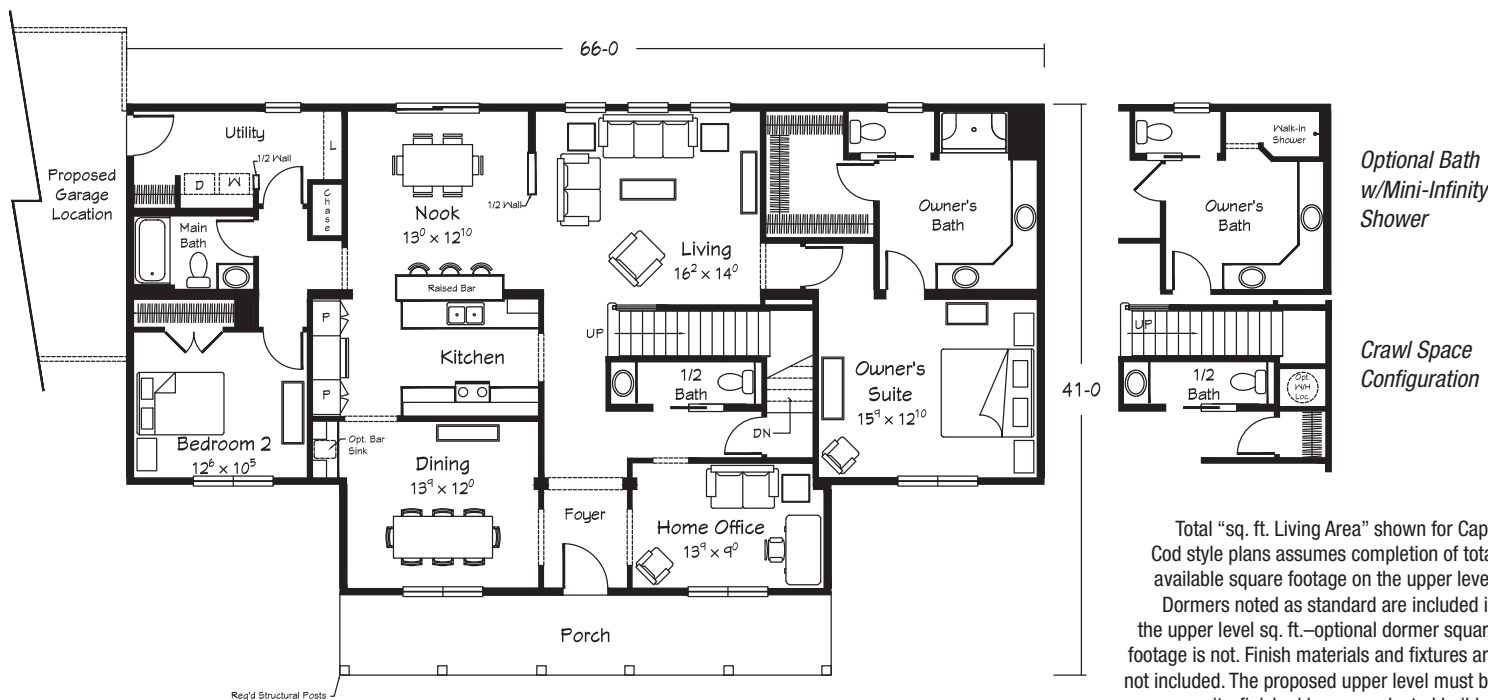
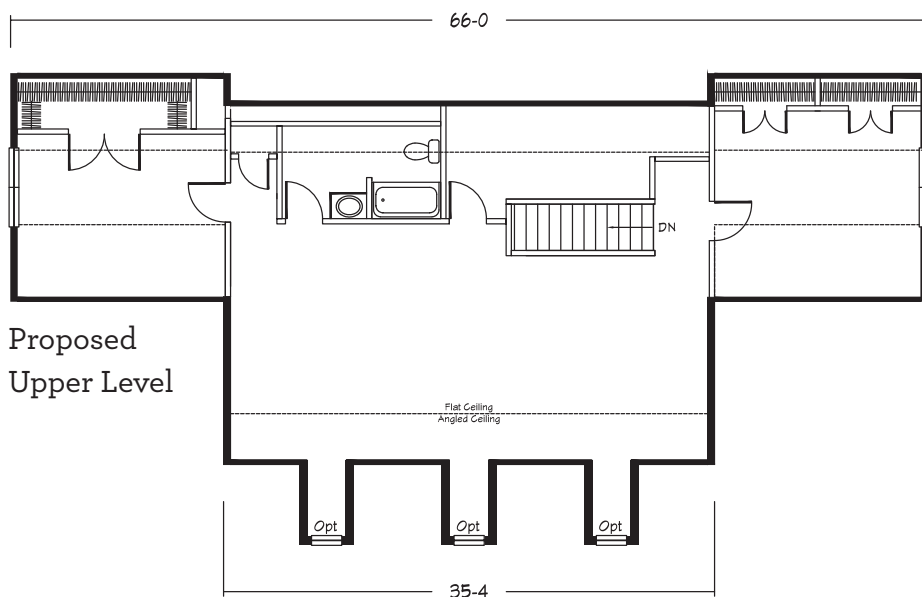
Total "sq. ft. Living Area" does not include garage or porch square footage.



Shown with site built garage.

## JAMES ISLAND III Cape Cod

4 Bedrooms · Home Office  
Loft · 3.5 Baths  
3520 sq. ft. Living Area  
(includes completion of  
1430 sq. ft. Upper Level Area)



Total "sq. ft. Living Area" shown for Cape Cod style plans assumes completion of total available square footage on the upper level. Dormers noted as standard are included in the upper level sq. ft.—optional dormer square footage is not. Finish materials and fixtures are not included. The proposed upper level must be site-finished by your selected builder.

Total "sq. ft. Living Area" does not include garage or porch square footage.



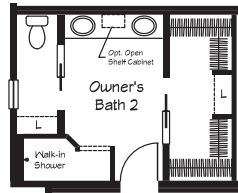
Shown with site built breezeway/garage with optional high pitch roof and dormers.

# JULIANNA

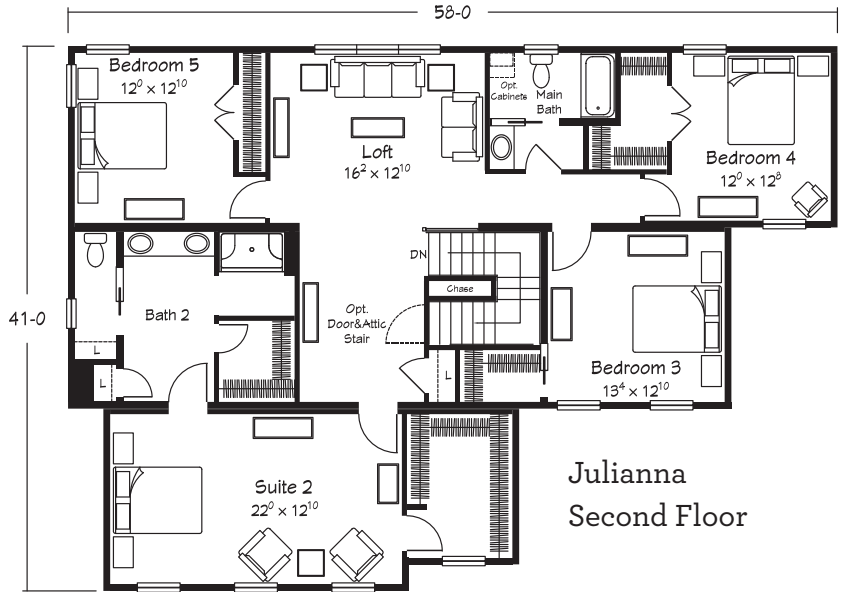
## Two Story

5 Bedrooms · Loft · 3.5 Baths

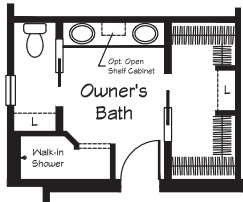
3730 sq. ft. Living Area



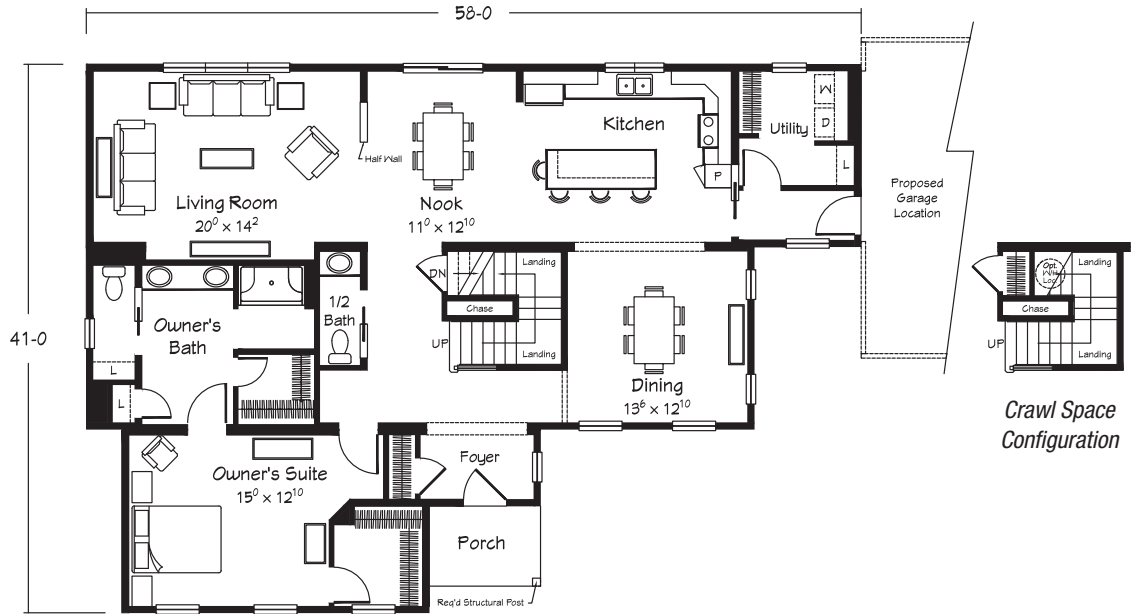
Optional Bath 2  
w/Mini-Infinity Shower



Julianna  
Second Floor



Optional Bath  
w/Mini-Infinity Shower



Julianna  
First Floor

Crawl Space  
Configuration

Total "sq. ft. Living Area" does not include garage or porch square footage.





Shown with site built garage and porch.

# MONTICELLO

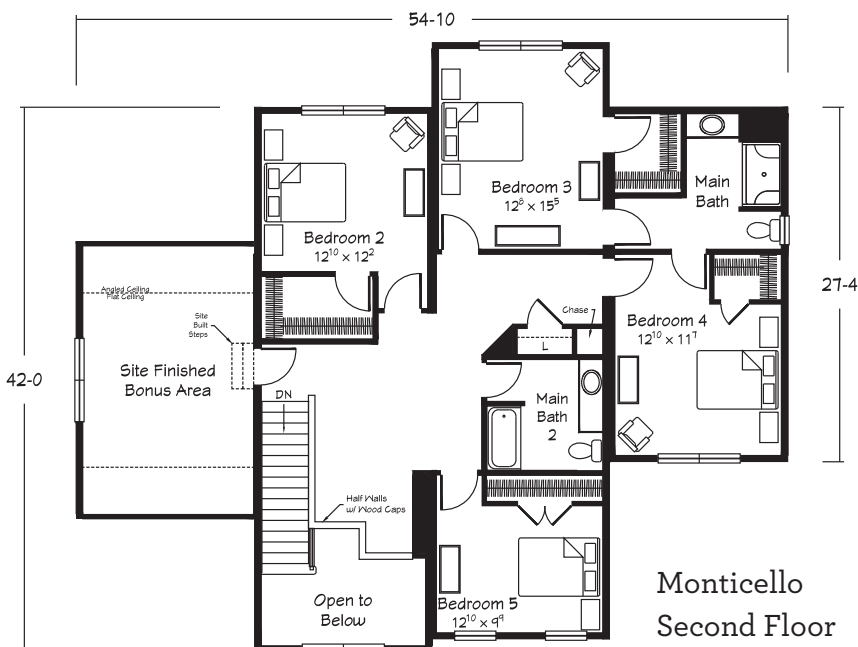
## Two Story

5 Bedrooms • Home Office • 3.5 Baths

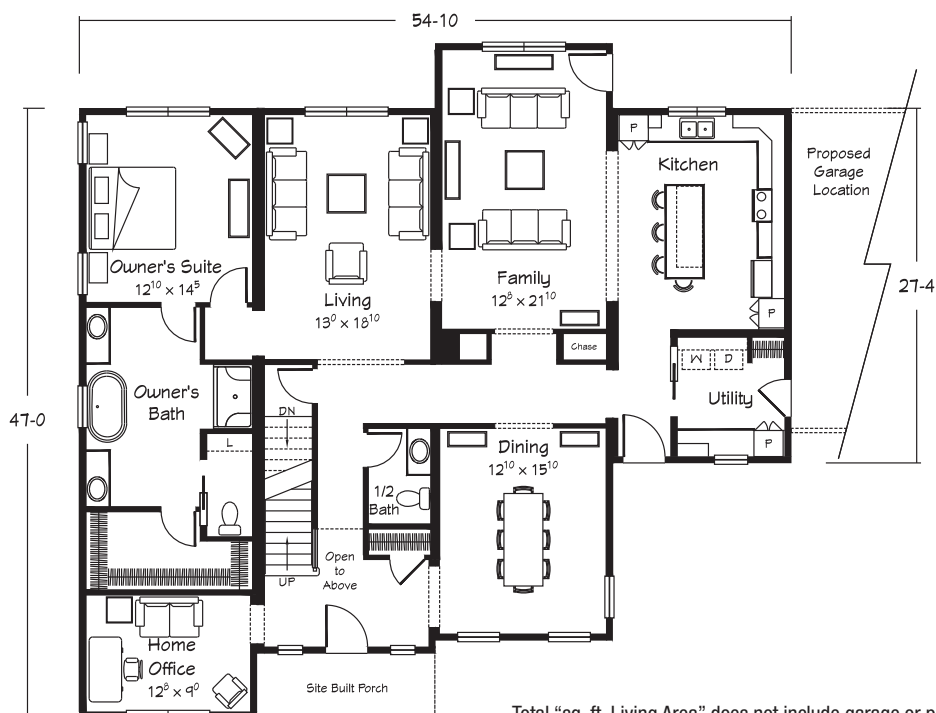
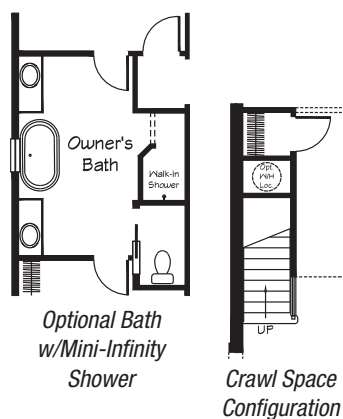
4094 sq. ft. Living Area

(includes 292 sq. ft.

site-built Upper Level Bonus Area)



Monticello  
First Floor



Total "sq. ft. Living Area" does not include garage or porch square footage.







Your approved  
Ritz-Craft  
Homebuilder:



Approved homebuilders are independent business entities and are not agents of Ritz-Craft Corporation.  
Due to occasional updating of building codes and Ritz-Craft's continuous product improvement, specifications are subject to change without prior notification. Be sure to request a copy of American Dream-Benchmark Specifications from your selected homebuilder.

Floorplans and renderings are ©2022 Ritz-Craft Corporation. 0922